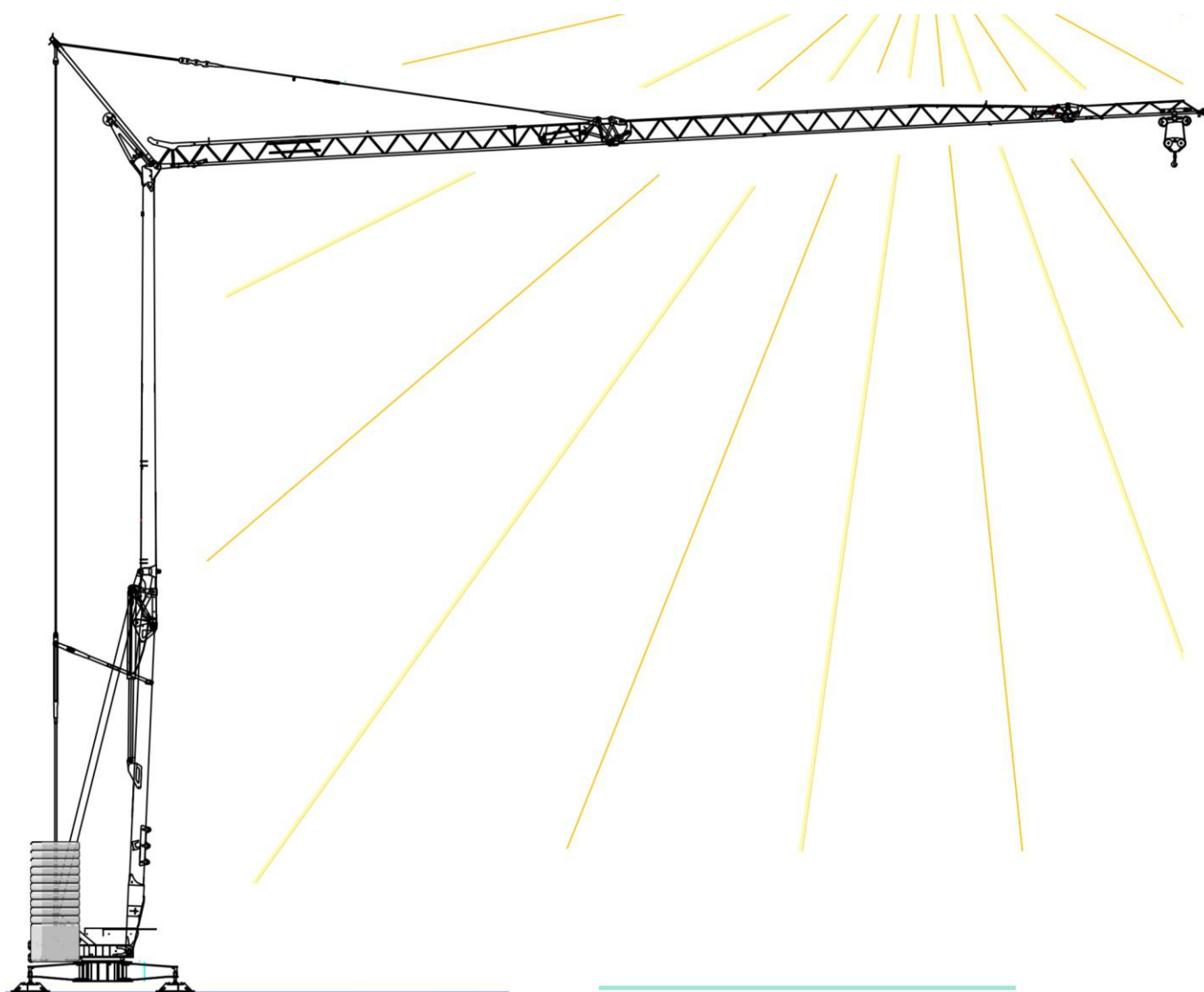


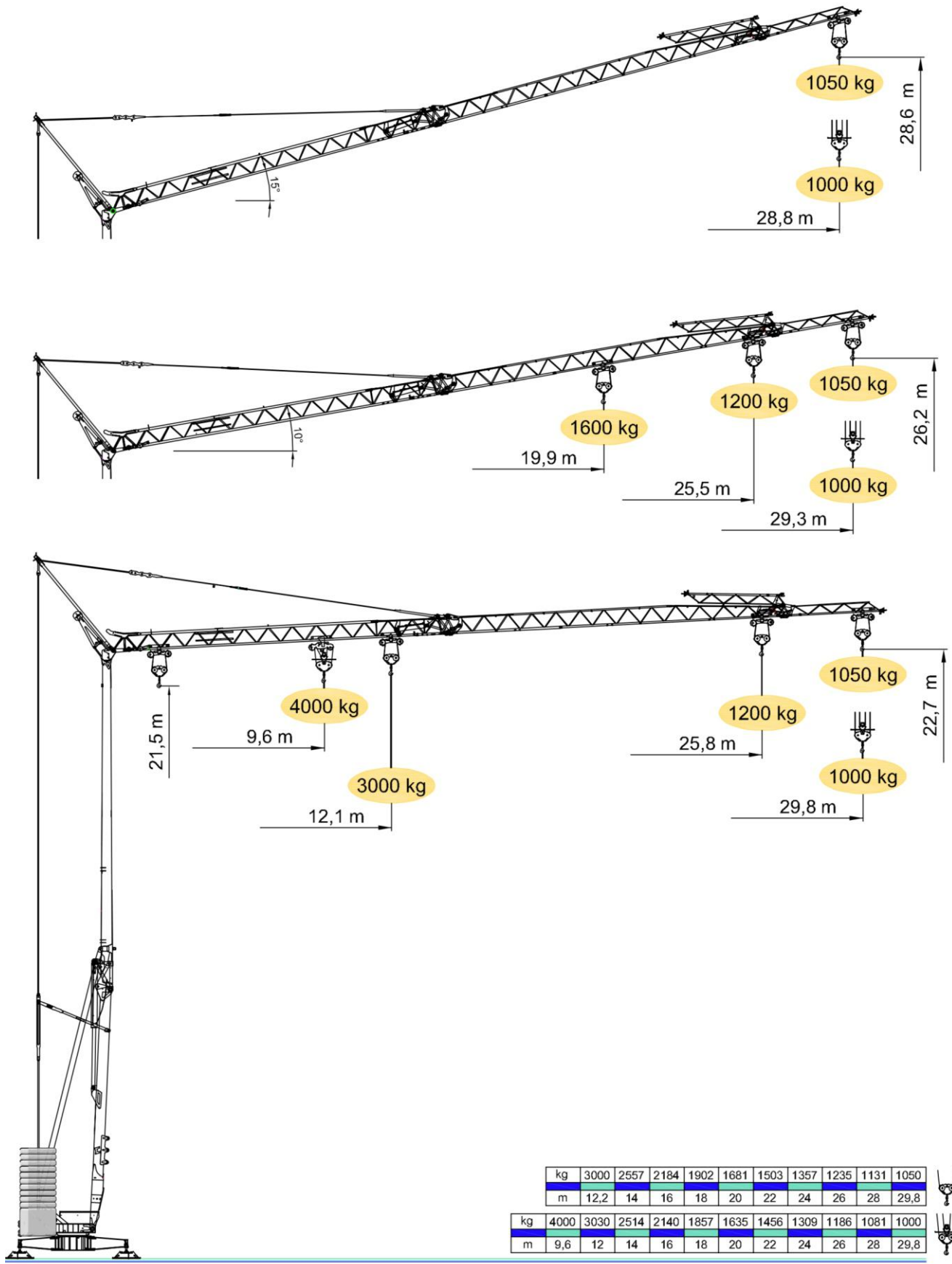
VICARIO OMV 30 A




Oficjalny dystrybutor na Polskę



Zakłady Mechaniczne Vicario S.p.a.
Specyfikacja może ulec zmianie bez wcześniejszego powiadomienia.



 Wyposażenie seryjne

4 prędkości (biegi) podnoszenia sterowane płynnie falownikiem, 3 prędkości obrotu i wodzenia sterowane falownikiem, ocynkowana konstrukcja i naciagi, balast, unoszony wysięgnik, wózek z silnikiem i wyłącznikiem krańcowym umieszczonym u podstawy wieży, możliwość pracy ze skróconym wysięgnikiem, wbudowane sterowanie radiowe, przycisk awaryjny, ostona chroniąca tożsako oporowe i mechanizmy, przygotowanie do samobalastowania, skrzynka elektryczna ze stali nierdzewnej, dokumentacja zgodna z normami EWG

 DOTAZIONE DI SERIE

Sollevamento "overdrive" a quattro velocità con inverter, rotazione e carrello a tre velocità con inverter, zincatura della struttura e dei tiranti, contrappeso, braccio impennabile, carrello rampante con motore e finecorsa alla base della torre, funzionamento con braccio ripiegato, comando a pulsantiera via cavo, carter di protezione per ralla e meccanismi, predisposizione per autozavorramento e radiocomando, armadio elettrico in acciaio inox, documentazione a norme CEE.

 STANDARD FEATURES


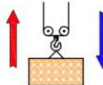




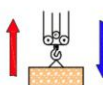




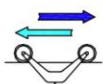
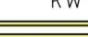











4-speed lifting, 3-speed rotation and trolley with inverter control, galvanised structure, counterweight, pull-up jib, translation trolley with motor and limit switch at base of gantry, operation with folden jib, cable-operated pushbotton remote control, guard for slewing ring and mechanisms, designed to allow installation of self-ballasting device and radio control, stainless steel electrical cabinet, documentation in accordance with EU standards.

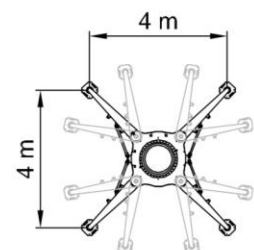
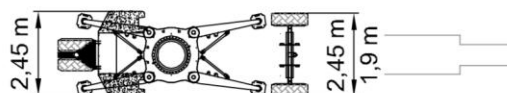
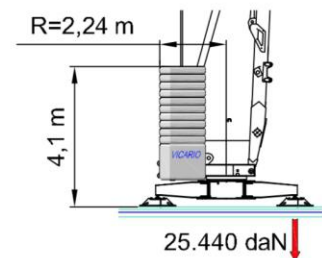
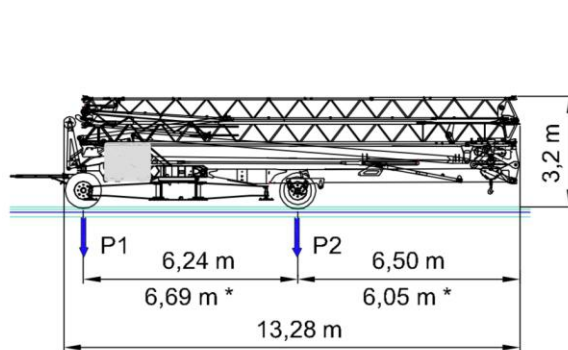
 EQUIPEMENT DE SERIE

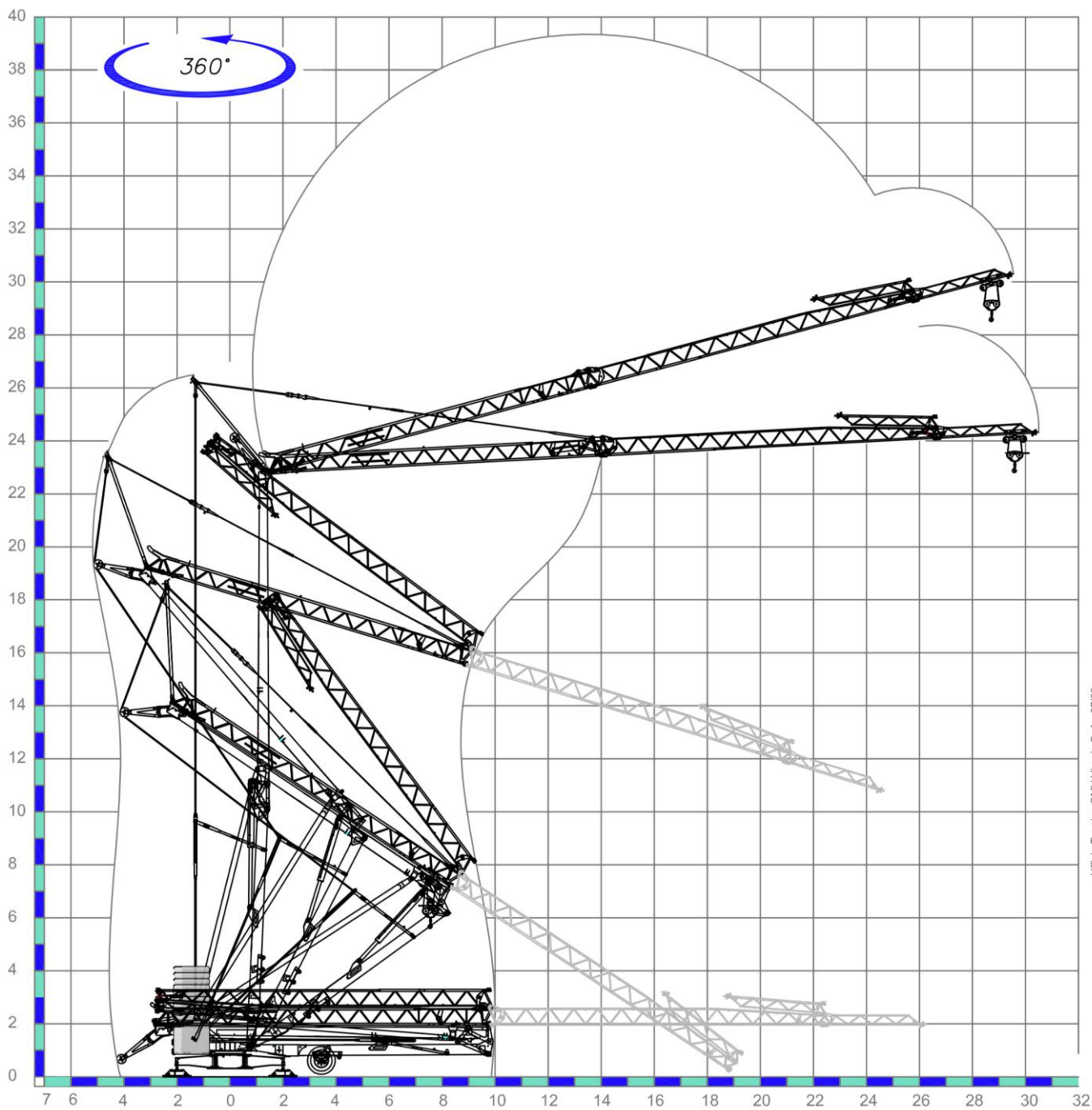
Levage à quatre vitesses, chariot et rotation à trois vitesses à contrôle électronique, galvanisation de la structure et des tirants, contreponds, flèche relevable, moteur de chariot et fin de course à la base de la tour, fonctionnement bras replié, commande par cable, carter de protection pour la couronne et les mécanismes, predisposition pour autolestage et commande radio, armoire électrique en acier inox, documentation conforme aux normes CEE.

 SERIENAUSSTATTUNG

Heben mit vier Geschwindigkeiten, Laufkatze und Rotation mit drei Geschwindigkeiten, Strukturverzinkung, Gegengewicht, hochklappbarer Arm, aufsteigender Wagen mit Motor und Anschlag an der Basis des Turms, Funktionieren mit eingeklapptem Arm, Steuerung mit Druckknopfsteife via Kabel, Schutzvorrichtungen für Drehverbindungen und Mechanismen, Vorbereitung für Selbstballasteinahme und Funksteuerung, elektrischer Schrank aus rostfreiem Stahl, Dokumentation gemäß EC Vorschriften.

	400V (±10%) 50 Hz		12kVA		
	m/l'				
	kg	8	20	46	56
	kW	3000	3000	1200	800
11					
	m/l'				
	kg	8 - 4*	20 - 10*	46 - 23*	56 - 28*
	kW	2000 - 4000*	2000 - 4000*	1200 - 2400*	800 - 1600*
11 (Inverter)					
	m/l'				
	kW	17.8	28.6	53.5 (↗39.3)	
3 (Inverter)					
	n/l'				
	kW	0.15	0.42	0.84	
1.55 (Inverter)					
	min			13.150 kg	
	kW	12			5.200 kg + 13.000 kg
	7800 kg	5200 kg	2600 kg	0 kg	
P1	8682 kg 9507 kg *	6670 kg 7456 kg *	4648 kg 5395 kg *	2530 kg 3245 kg *	
P2	12258 kg 11433 kg *	11680 kg 10894 kg *	11102 kg 10355 kg *	10620 kg 9905g *	





Ufficio Tecnico OMV Vicario SpA - 07/09



International Machinery Stock

ul. Rogowska 9
 54 -440 Wrocław
 tel. +48 71 715 61 03
 e-mail: biuro@ims24.pl
 www: ims24.pl

Pieczałka: