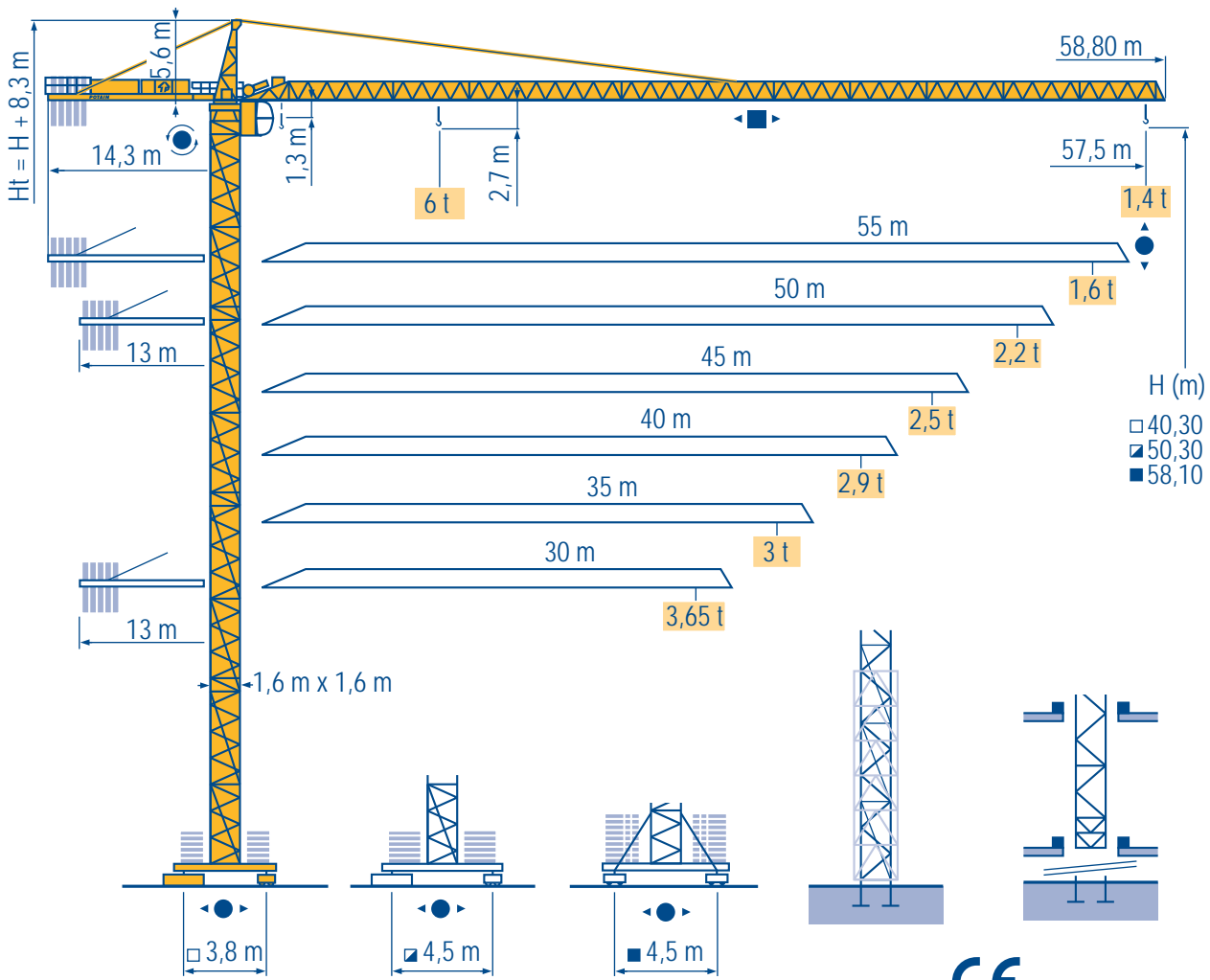


# CITY CRANE MD 125 B



LSP 1

CE FEM 1.001-A3

HD  
HDM



HDT



GTMR



CITY CRANE



TOPKIT MD  
MAXI MD



MAXI TOPKIT



Topless MDT



MR



**POTAIN** 

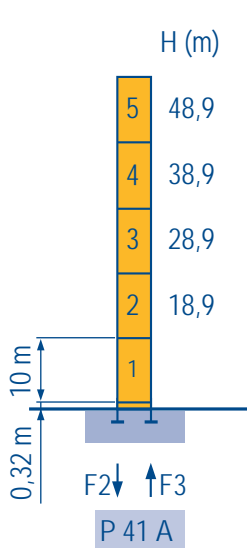
Mat / Réactions  
Maste / Eckdrücke  
City 1,6 m



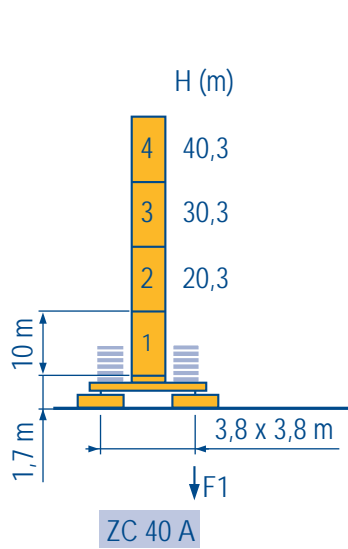
Masts / Reactions  
Mástil / Reacciones  
City 1,6 m



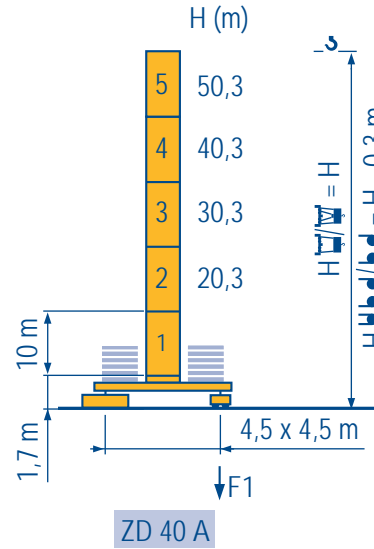
Torre / Reazioni  
塔身 / 反力  
City 1,6 m



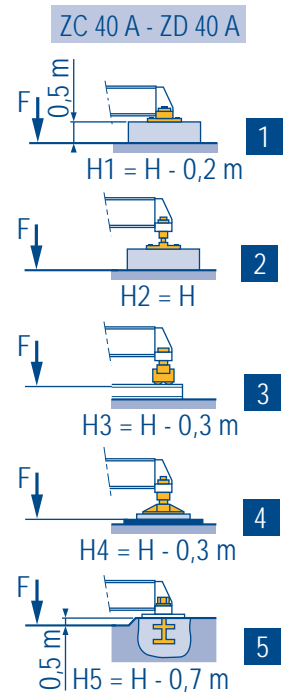
F2	● 105 t	■ 147 t
F3	● 71 t	■ 116 t
	▲ 33 t	



F1	● 58 t	■ 63 t
	▲ 35 t	



F1	● 65 t	■ 83 t
	▲ 40 t	



LSP 1

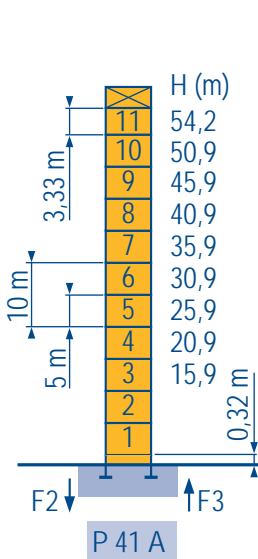
Télescopable 1,6 m  
Teleskopierbar 1,6 m



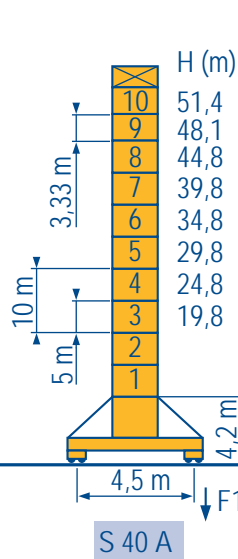
Telescopic 1,6 m  
Telescopico 1,6 m



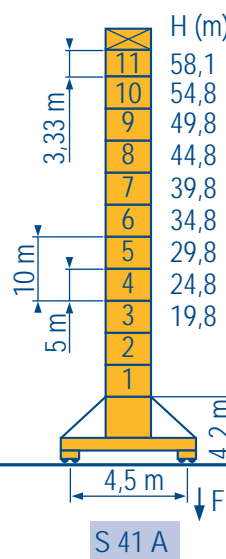
Telescopico 1,6 m  
可顶升 1,6 m



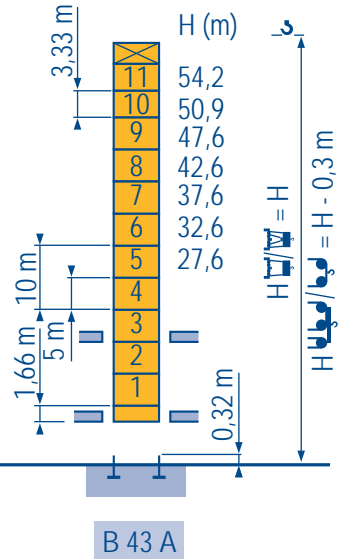
F2	● 115 t	■ 173 t
F3	● 81 t	■ 142 t
	▲ 46 t	



F1	● 73 t	■ 96 t
	▲ 50 t	



F1	● 86 t	■ 121 t
	▲ 54 t	



LSP 1

Voir télescopage sur dalles  
● Réactions en service  
■ Réactions hors service  
 A vide sans lest (ni train de transport) avec flèche et hauteur maximum.



See climbing crane  
Reactions in service  
Reactions out of service  
Without load, ballast (or transport axles), with maximum jib and maximum height.



Consultare gru in cavedio  
Reazioni in servizio  
Reazioni fuori servizio  
A vuoto, senza zavorra (ne assali di trasporto) con braccio massimo e altezza massima.



Siehe kletterkrane im gebäude  
● Reaktionskräfte in Betrieb  
■ Reaktionskräfte außer Betrieb  
 Ohne Last, Ballast (und Transportachse), mit Maximalausleger und Maximalhöhe.

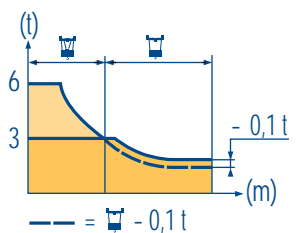
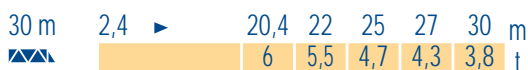
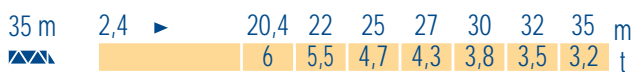
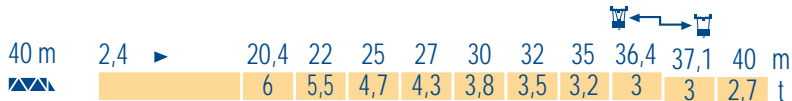
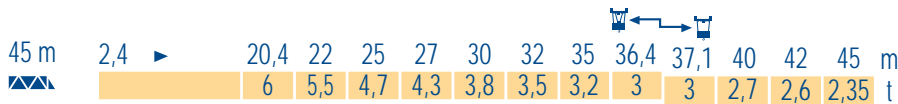
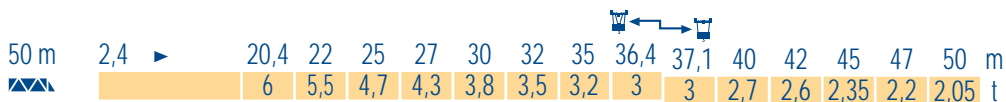
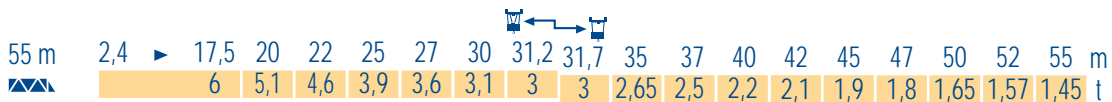
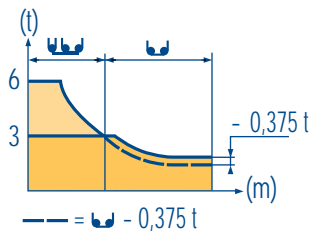
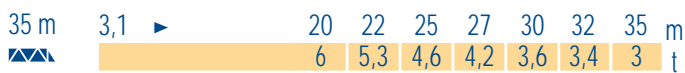
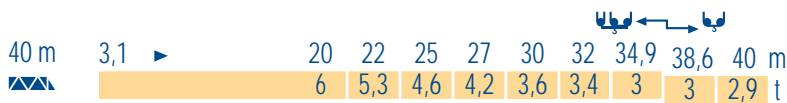
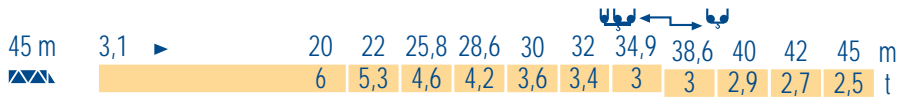
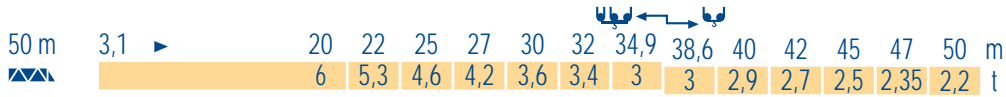
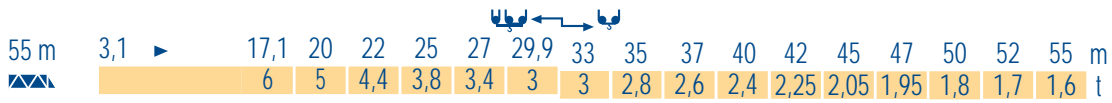
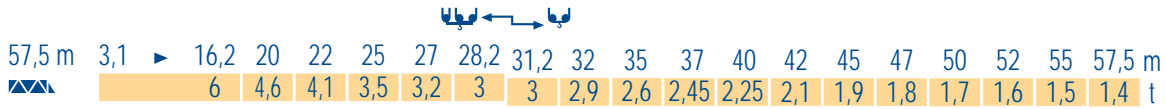


Vea grua trepadora  
Reacciones en servicio  
Reacciones fuera de servicio  
Sin carga, sin lastre, (ni tren de transporte), flecha y altura máxima.



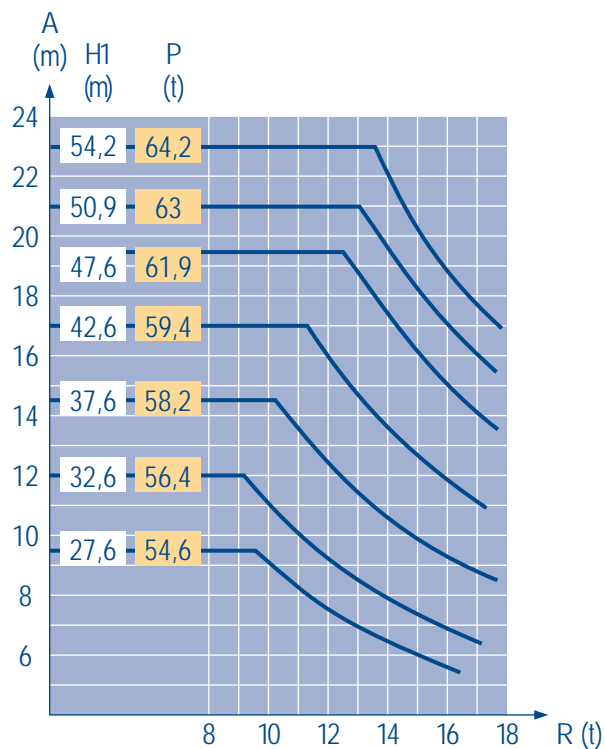
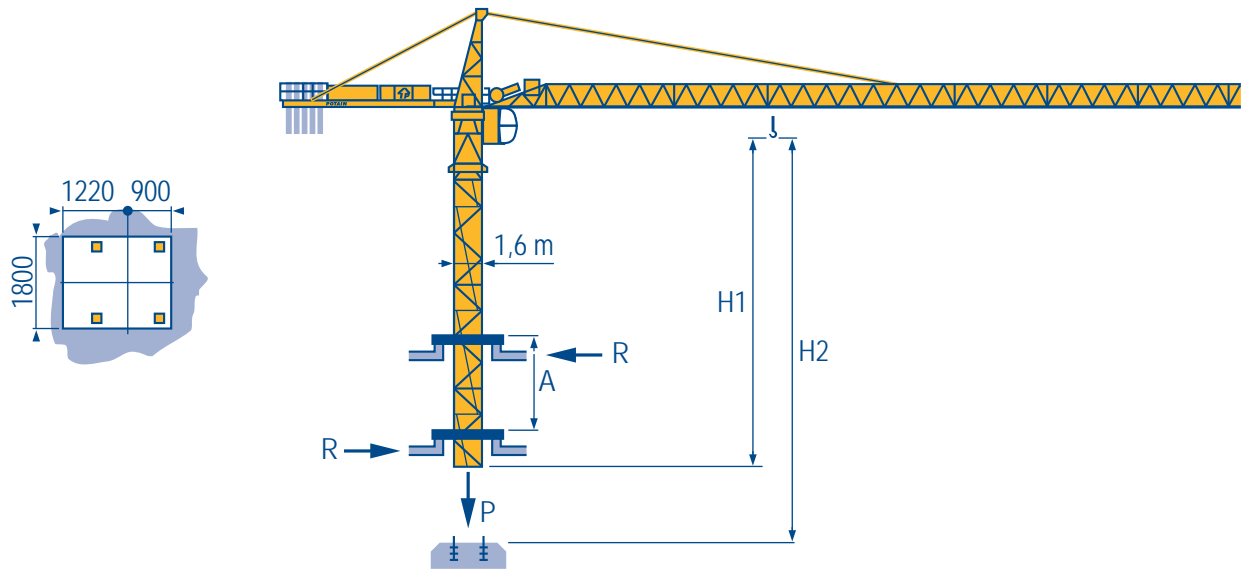
见楼板顶升  
工作状况下的反应  
非工作状况下的反应  
空载无压重也无运输车  
有吊臂和最大高度





LSP 1

B 43 A



LSP 1

A Distance entre cadres  
H1 Hauteur grue  
P Poids de la grue (en service)  
R Réaction horizontale

F

Distance between collars  
Crane height  
Crane weight (in service)  
Horizontal reaction

GB

Distanza fra i telai  
Altezza gru  
Peso della gru (in servizio)  
Reazione orizzontale

I

A Abstand zwischen den Rahmen  
H1 Kranhöhe  
P Krangewicht (in Betrieb)  
R Horizontalkräfte

D

Distancia entra marcos  
Altura grúa  
Peso de la grúa (en servicio)  
Reaccion horizontal

E

各附着框之间距离  
工作状态下塔机高度  
工作状态下塔机重量  
水平反力

C

Lest de contre-flèche  
Gegenauslegerballast



Counter-jib ballast  
Lastre de contra flecha

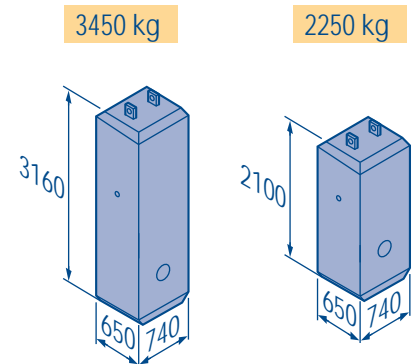


Contrappeso  
平衡臂重



			3450 kg	2250 kg	(kg)
57,5 m		14,3 m	5	-	17 250
55 m		14,3 m	4	1	16 050
50 m		13 m	4	1	16 050
45 m		13 m	3	2	14 850
40 m		13 m	4	-	13 800
35 m		13 m	3	1	12 600
30 m		13 m	2	2	11 400

LSP 1



Lest de base  
Grundballast



Base ballast  
Lastre de base












Zavorra di base  
压重



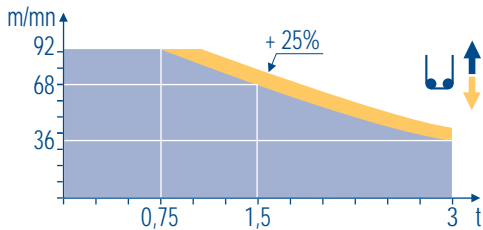
∅1,6 m	ZC 40 A	H (m)	40,3	30,3	20,3						
		(t)	70	65	60						
∅1,6 m	ZD 40 A	H (m)	50,3	40,3	30,3	20,3					
		(t)	70	55	45	45					
∅1,6 m	S 40 A	H (m)	51,4	48,1	44,8	39,8	34,8	29,8	24,8	19,8	
		(t)	84	72	54	48	42	42	42	36	
∅1,6 m	S 41 A	H (m)	58,1	54,8	49,8	44,8	39,8	34,8	29,8	24,8	19,8
		(t)	114	102	78	54	48	42	42	42	36

LSP 2

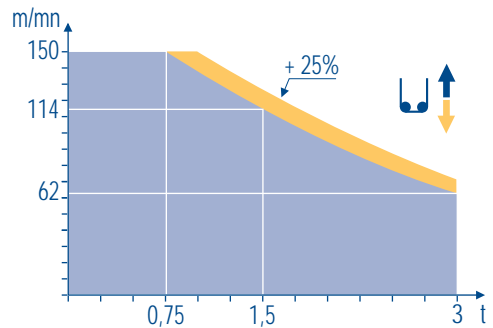
			↑			↑			ch - PS hp	kW	
	25 PC 15	m/min	6	30	60	3	15	30	25	18,4	260 m
		t	3	3	1,5	6	6	3			
	33 PC 15	m/min	6	37,5	75	3	19	37,5	33	24	260 m
		t	3	3	1,5	6	6	3			
	33 LVF 15 Optima	m/min	3 → 12 → 36 → 48 → 68 → 92	1,5 → 6 → 18 → 24 → 34 → 46	30	22	260 m				
		t	3 3 3 2,25 1,5 0,75	6 6 6 4,5 3 1,5							
	50 LVF 15 Optima	m/min	5 → 20 → 62 → 80 → 114 → 150	2,5 → 10 → 31 → 40 → 57 → 75	50	37	398 m				
		t	3 3 3 2,25 1,5 0,75	6 6 6 4,5 3 1,5							
	4 D3 V3	m/min	15 - 30 - 58						4	3	
	RCV 145	tr/min U/min rpm	0 → 0,8						2 x 6	2 x 4,4	
ZC 40 A ZD 40 A 	RT 224	m/min	25						2 x 4	2 x 2,9	
S 40 A 	RT 324 R 10 m	m/min	12,5 - 25						2 x 7	2 x 5,2	
S 41 A 	RT 443 A1 2V R 10 m	m/min	15 - 30						4 x 5	4 x 3,7	

CEI 38 	IEC 38	<b>kVA</b>	
400 V (+6% -10%) 50 Hz		25 PC : 40 kVA 33 PC : 50 kVA 33 LVF : 50 kVA 50 LVF : 65 kVA	84/534 - 87/405



33 LVF 15  
Optima



50 LVF 15  
Optima



LSP 1

	Levage Distribution Orientation Translation Conforme aux directives CEE 84/534 et 87/405 sur le niveau acoustique	(F) Hoisting Trolleying Slewing Travelling In compliance with the EEC 84/534 and 87/405 Instructions on noise level	(GB) Sollevamento Distribuzione Rotazione Traslazione Conforme alle direttive CEE 84/534 e 87/405 sul livello acustico	(I)
		Heben Katzfahren Schwenken Kranfahren Gemäss EWG-Richtlinien 84/534 und 87/405 für den Schall-Leistungspegel	(D) Elevación Distribución Orientación Traslación Conforme con las directivas CEE 84/534 y 87/405 sobre el nivel acustico	(E) 起升 变幅 回转 行走 符合 CEE 84/534 - CEE 87/405 声晌度规定

Ref. 2000.05 LSP 2



18.Rue de Charbonnières, B.P. 173  
F-69132 ECULLY Cedex  
Tél. (33)04.72.18.20.20  
Fax (33)04.72.18.20.00  
http://www.potain.com  
E-mail : mkt@potain.fr

CITY CRANE MD 125 B

Copyright.Reproduction interdite © POTAIN 2000

Deutschland  
POTAIN GmbH Tel : 06.105.704.0  
Italia  
POTAIN S.p.A. Tel : 0.331.49.33.11  
Singapore  
POTAIN PTE LTD Tel : (00.65) 227.1550