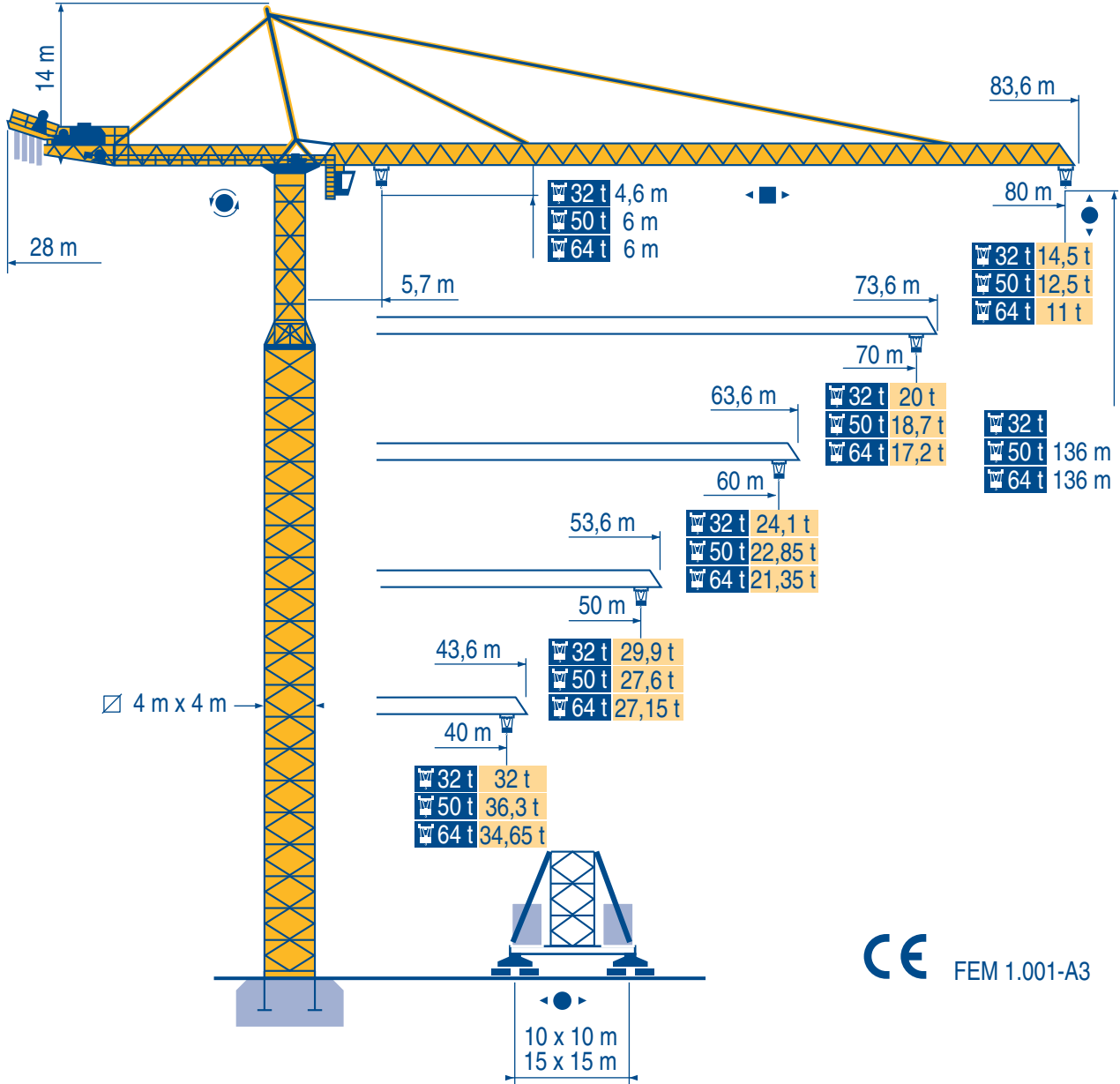


MD 1400



Igo
HD
HDM

HDT

GTMR

CITY CRANE

TOPKIT MD
MAXI MD

MAXI TOPKIT

Topless MDT

MR

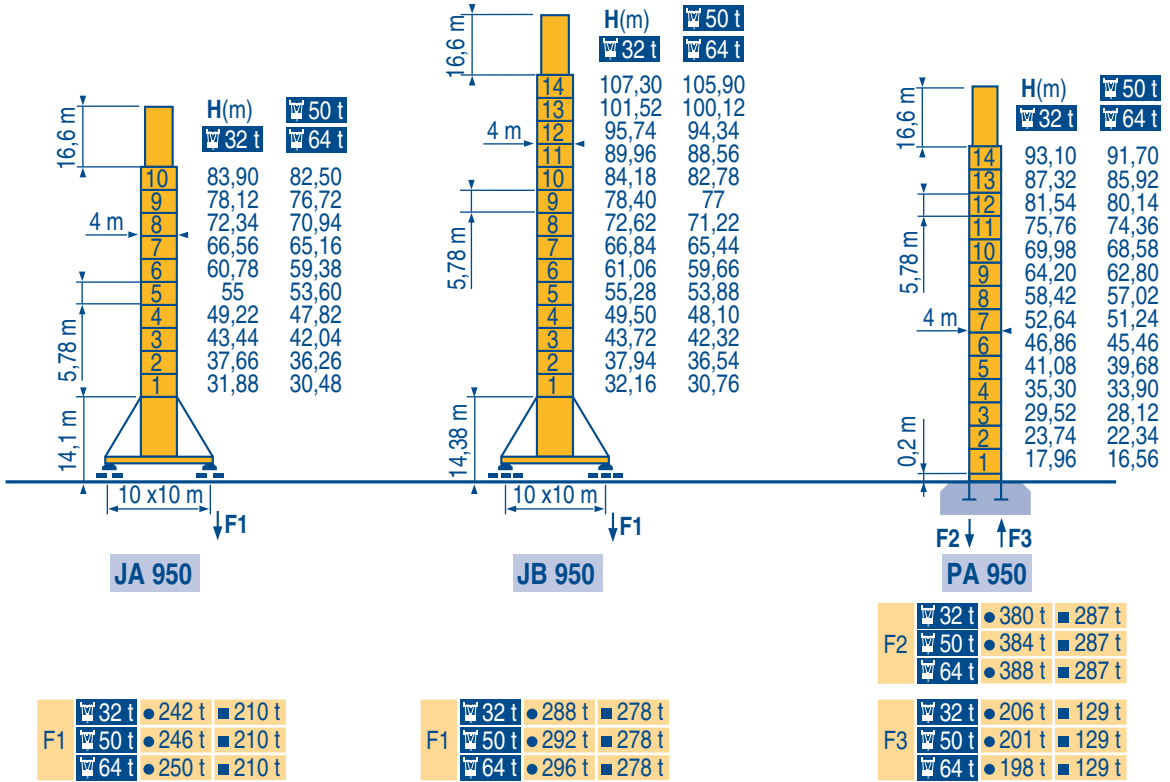


FEM 1.001-A3

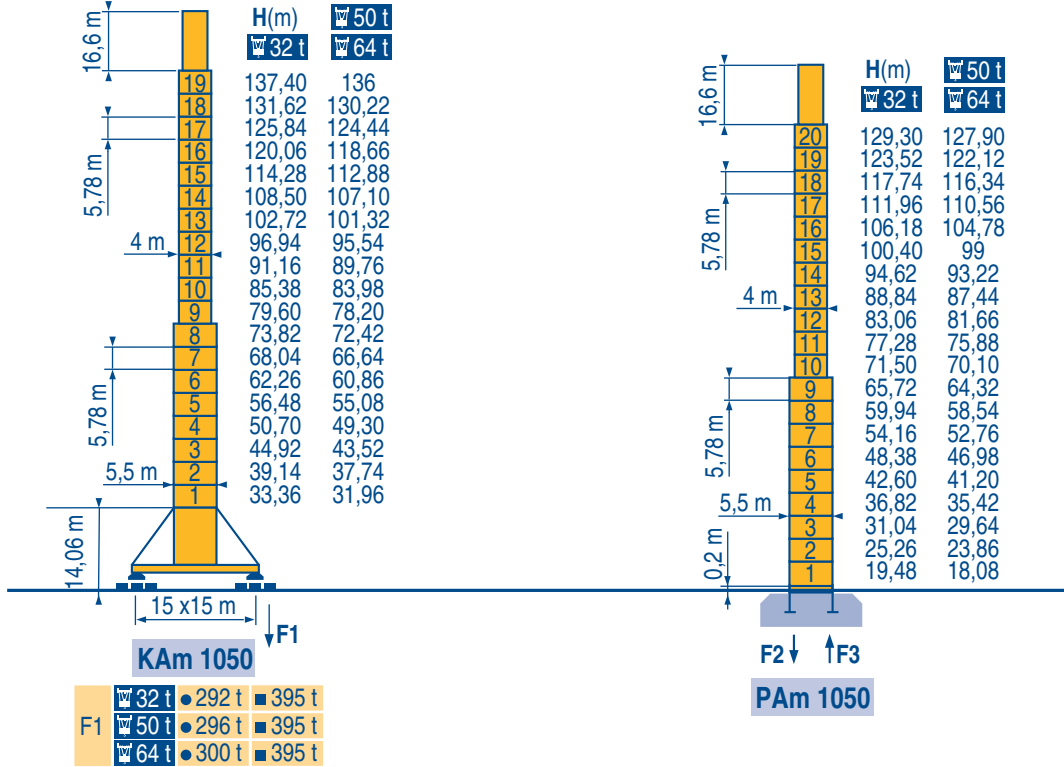


POTAIN

4 m x 4 m

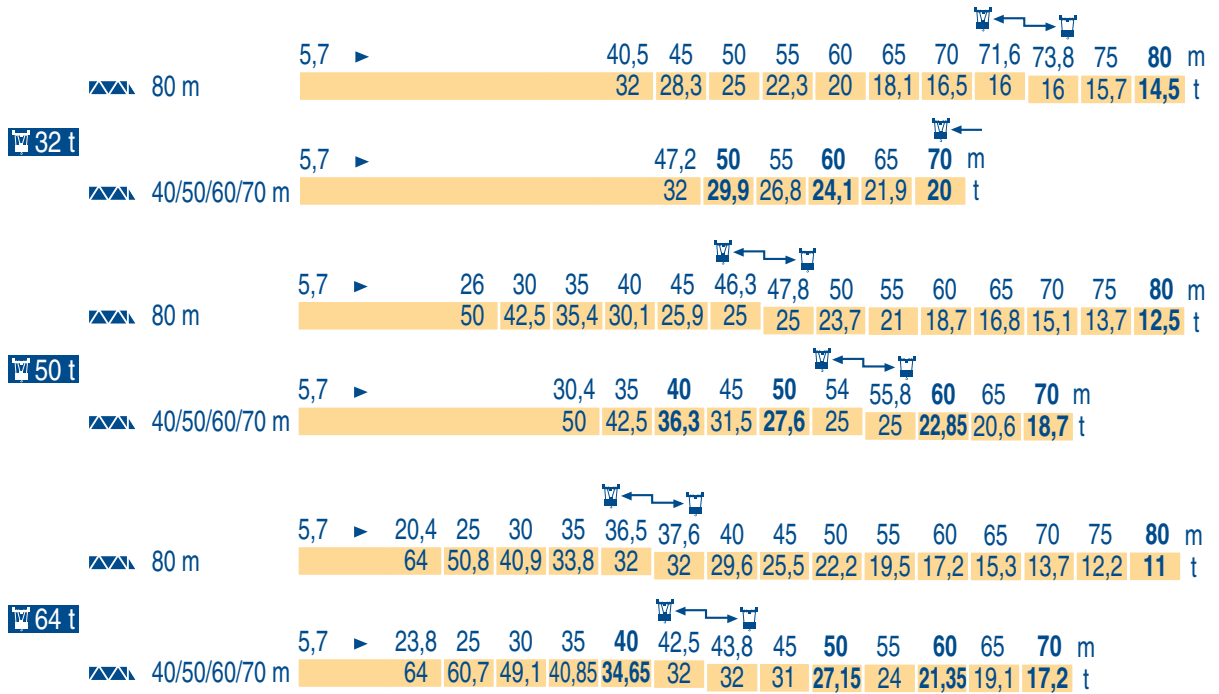


4 m x 4 m / 5,5 m x 5,5 m

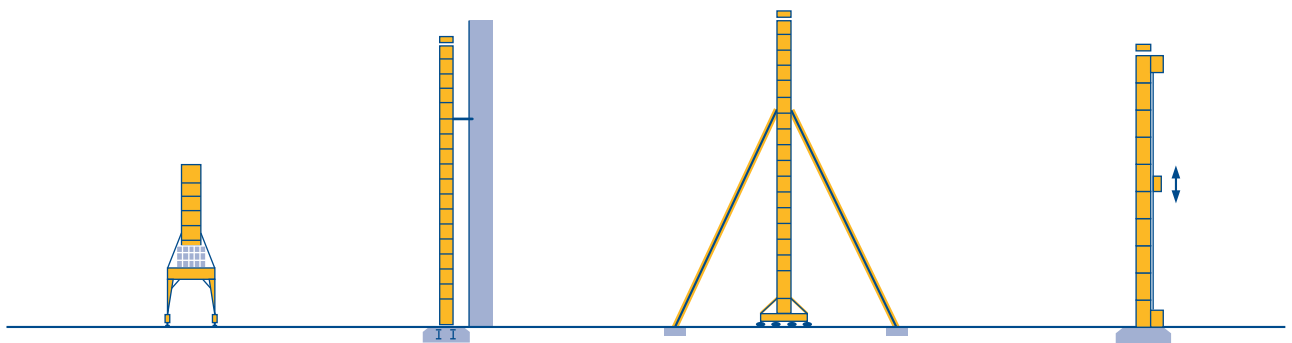


LNJ 1

● Réactions en service	F Reactions in service	GB Reazioni in servizio	I
■ Réactions hors service	Reactions out of service	Reazioni fuori servizio	
● Reaktionskräfte in Betrieb	D Reacciones en servicio	E 工作状态下的反应	C
■ Reaktionskräfte außer Betrieb	Reacciones fuera de servicio	非工作状态下的反应	



LNJ 1



LNJ 1

i Nous consulter

F

Consult us

GB

Consultateci

I

i Auf Anfrage

D

Consultarnos

E

请向我方咨询

C

														ch - PS hp	kW	
		250 LCC 80	m/min	46	68	86	108	122	23	34	43	54	61	250	180	620 m > 620
			t	16	12	8	4	2	32	24	16	8	4			
		250 LCC 125	m/min	30	44	56	72	80	15	22	28	36	40	250	180	690m > 690
			t	25	18,8	12,5	6,2	3,1	50	37,5	25	12,5	6,25			
		250 LCC 160	m/min	24	34	44	56	62	12	17	22	28	31	250	180	440 m > 440
			t	32	24	16	8	4	64	48	32	16	8			
		15 DRC 10	m/min	0 - 3,1 → 32 - 64								14	10,3			
		15 DRC 16	m/min	0 - 1,9 → 20 - 40								14	10,3			
		25 DTV 25	m/min	0 → 11 → 33 → 66				0 → 11 → 33				25	18,4			
		25 DTV 33	m/min	0 → 8 → 25 → 50				0 → 8 → 25				25	18,4			
	RTV		tr/min U/min rpm	0 → 0,65								3 x 25	3x 18,4			
			m/min	0 → 16								16 x 4	16 x 3			
				8,5 - 17								12 x 5	12 x 3,7			
CEI 38			IEC 38			kVA										
400 V (+6% -10%) 50 Hz			250 LCC : 340 kVA			84/534 - 87/405										

LNJ 2

	Levage	F	Hoisting	GB	Sollevamento	I
	Distribution		Trolleying		Distribuzione	
	Orientation		Slewing		Rotazione	
	Translation		Travelling		Traslazione	
	Conforme aux directives CEE 84/534 et 87/405 sur le niveau acoustique		In compliance with the EEC 84/534 and 87/405 Instructions on noise level		Conforme alle direttive CEE 84/534 e 87/405 sul livello acustico	
	Nous consulter		Consult us		Consultateci	
	Heben	D	Elevación	E	起升	C
	Katzfahren		Distribución		变幅	
	Schwenken		Orientación		回转	
	Kranfahren		Traslación		行走	
	Gemäss EWG-Richtlinien 84/534 und 87/405 für den Schall-Leistungspegel		Conforme con las directivas CEE 84/534 y 87/405 sobre el nivel acustico		符合 CEE 84/534 - CEE 87/405 声响度规定	
	Auf Anfrage		Consultarnos		请向我方咨询	

Réf. 1997.47 LNJ 6



18.Rue de Charbonnières, B.P. 173
F-69132 ECULLY Cedex

Tél. (33)04.72.18.20.20
Fax (33)04.72.18.20.00
http://www.potain.com
E-mail : mkt@potain.fr

MD 1400

Copyright.Reproduction interdite © POTAIN 1997

Deutschland
POTAIN GmbH Tel : 06.105.704.0

Italia
POTAIN S.p.A. Tel : 0.331.49.33.11

Singapore
POTAIN PTE LTD Tel : (00.65) 227.1550

修改我方

Modifiche riservate

Modificaciones reservadas

Subject to modification

Änderungen vorbehalten

Modificacions reservades

Printed in France

Realisation HeadLines