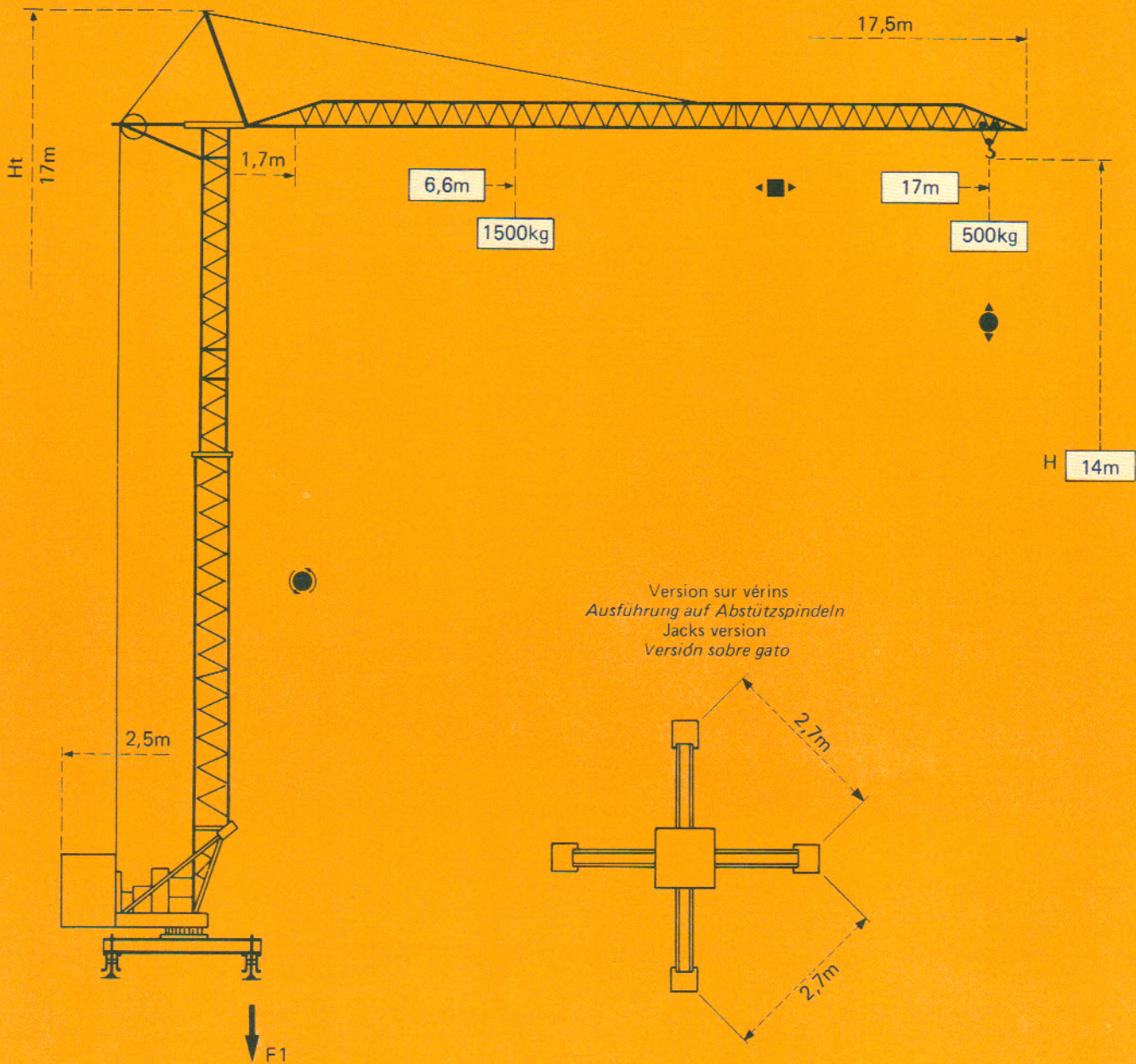



GMR 17.50


POTAIN 




F1 = Réactions Eckdrücke Reactions Reacciones

F1	● 52 kN	■ 27 kN
	3,6 t	


- En service
- Hors service

 A vide sans lest ni train de transport, avec flèche et hauteur maximum.


- In Betrieb
- Ausser Betrieb

 Ohne Last, Ballast und Transportachse, mit Maximalausleger und Maximalhöhe.

- In service
- Out of service


 Without load, ballast or transport axles, with maximum jib and maximum height.

- En servicio
- Fuera de servicio

 Sin carga, sin lastre, ni tren de transporte, flecha y altura máximas.

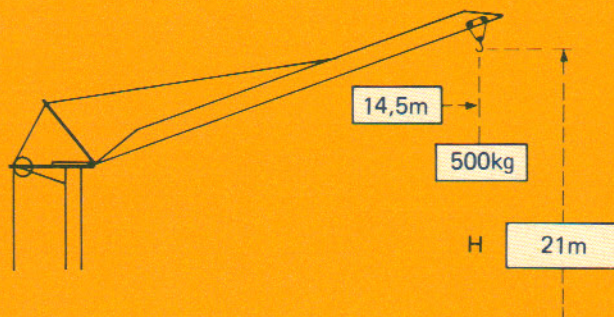
Courbes de charges *Lastkurven* Load diagrams *Curvas de cargas*

 Flèche *Ausleger* Jib *Flecha*

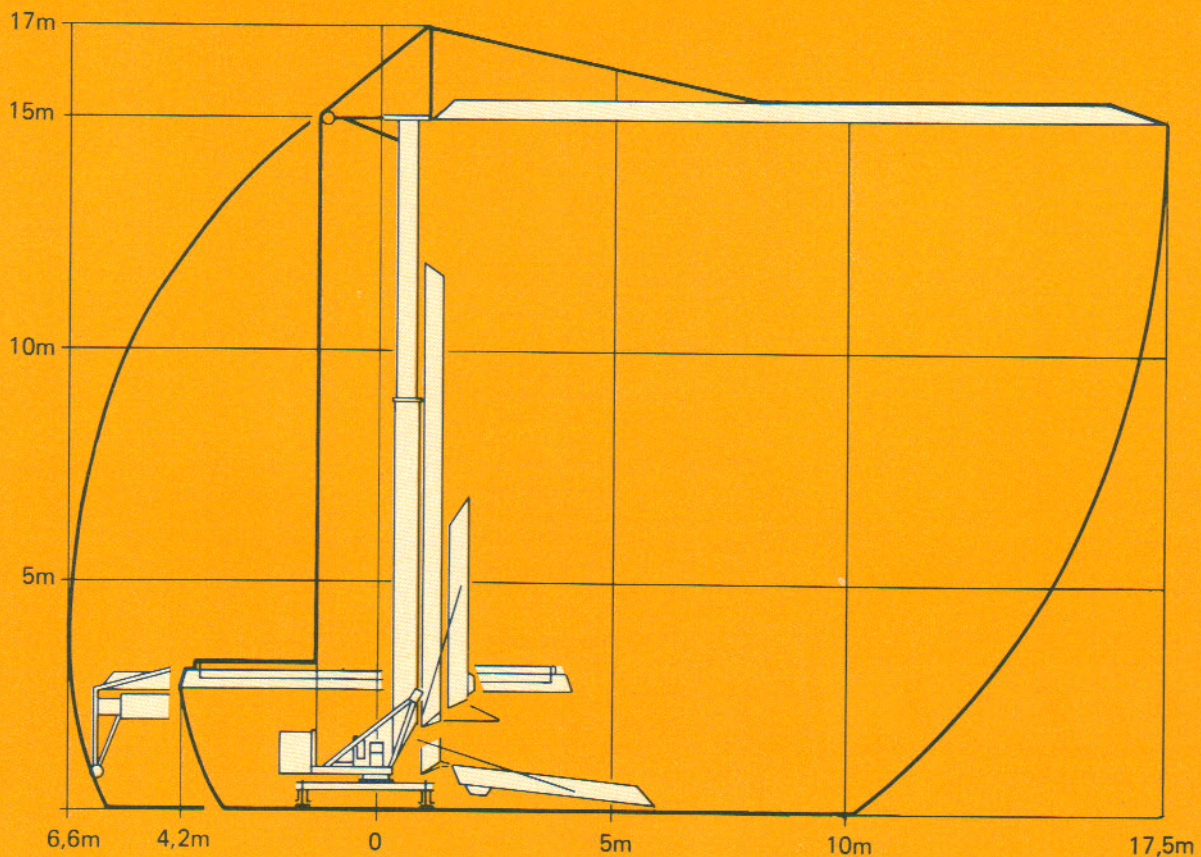
	1,7	→ 6,6	7	8	9	10	11	12	14	17	m
	1500	1395	1190	1030	909	810	730	610	500		kg

Flèche relevée *Ausleger in Steilstellung* Luffing jib *Flecha izada*











Chariot bloqué
(version standard)
Verriegelte Laufkatze
(Standardausführung)
Trolley locked
(standard crane)
Carro bloqueado
(version standard)



Montage *Montage* Erection *Montaje*

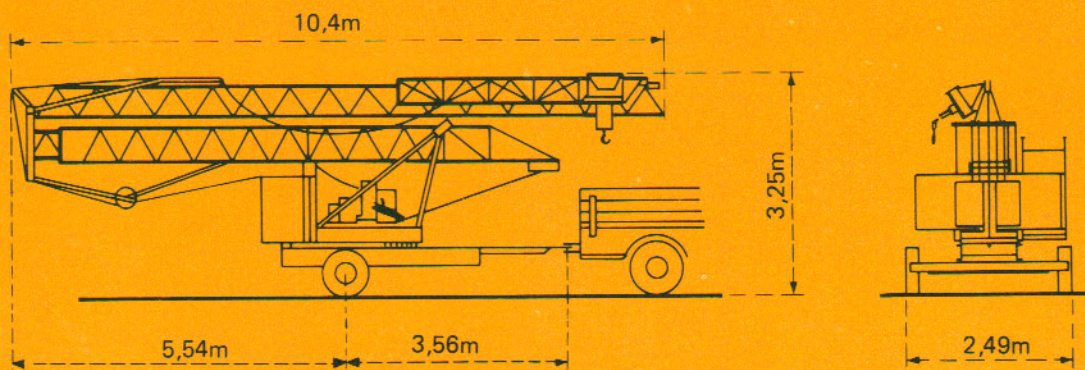


Mécanismes *Antriebe* Mechanisms *Mecanismos*

				m/min	kg	ch-PS hp	kW
Levage <i>Heben</i> Hoisting <i>Elevación</i>				12,5	1500	6	4,5
				25	750		
Distribution - <i>Katzfahren</i> Trolleying - <i>Distribución</i>				25		1	0,7
Orientation - <i>Schwenken</i> Slewing - <i>Orientación</i>				0 → 1 tr/min U/min-rpm		0,5	0,37
Réseau - <i>Netzstrom</i> - Mains supply - <i>Red</i>						220 V - 380 V 50 Hz	
Puissance électrique nécessaire - <i>Anschlusswert</i> - Necessary electric power - <i>Potencia electrica necesaria</i>						10 KVA	
Groupe électrogène - <i>Stromaggregat</i> - Generator set - <i>Grupo electrogeno</i>						•	

* Nous consulter - *Auf Anfrage* - Consult us - *Consultarnos*

Transport *Transport* Transport *Transporte*



Version tractée derrière camion
Ausführung als LKW-Anhänger
 Lorry towed version
Versión remolcable detrás de un camión

POTAIN 

18, rue de Charbonnières B.P 173 - F 69132 ECULLY Cedex
 Tél. (7) 833.81.81 - Télex 330 179

DIRECTION DES ACTIVITES INTERNATIONALES

207, rue de Bercy - F 75012 PARIS

Tél. (1) 347.30.77 - Télex 215 483

POTAIN GmbH - D 6082 MÖRFELDEN - WALLDORF

Nordendstr. 79-87 - Postfach 420 - Tel. 06105 704.0 - Telex 4.185745

POTAIN SUISSE S.A - CH 5115 MÖRIKEN WILDEGG

Tel. 64.53.19.91 - Telex 68294

Ref. 8409 KGQ 1