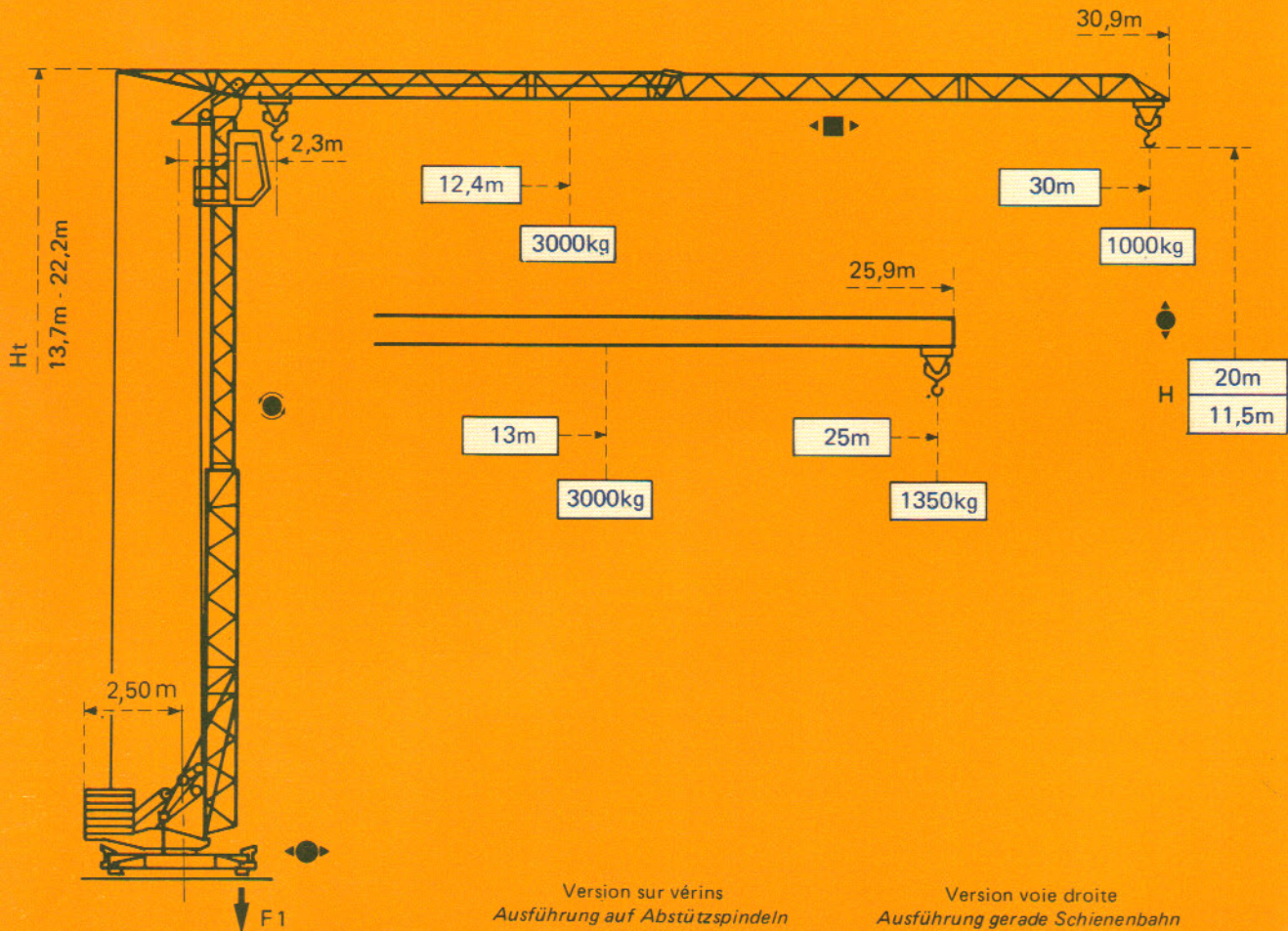


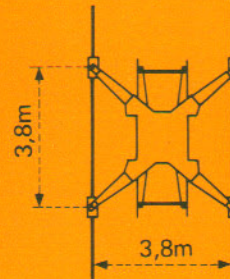
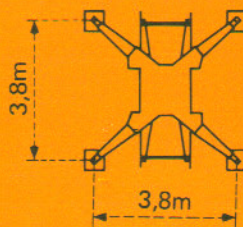
GMR 326 D

POTAIN 




Version sur vérins
Ausführung auf Abstützspindeln
 Jacks version
Versión sobre gato


Version voie droite
Ausführung gerade Schienenbahn
 Straight track version
Versión vía recta




F1 = Réactions *Eckdrücke* Reactions *Reacciones*

F1	● 17t	■ 10t
	10,8t	


- En service
- Hors service

 A vide sans lest ni train de transport, avec flèche et hauteur maximum.


- In Betrieb
- Ausser Betrieb

 Ohne Last, Ballast und Transportachse, mit Maximalausleger und Maximalhöhe.

- In service
- Out of service

 Without load, ballast or transport axles, with maximum jib and maximum height.

- En servicio
- Fuera de servicio

 Sin carga, sin lastre, ni tren de transporte, flecha y altura máximas.

Courbes de charges

Lastkurven

Load diagrams

Curvas de cargas



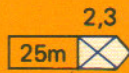
Flèche Ausleger Jib Flecha



2,3



12,4	13	14	16	18	20	22	24	26	28	30	m
3000	2820	2580	2190	1900	1670	1480	1330	1200	1090	1000	kg



2,3



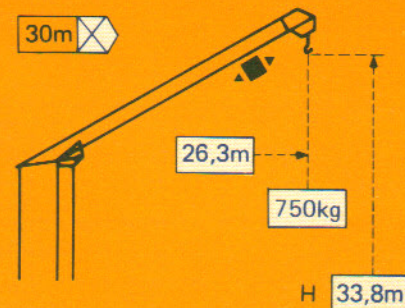
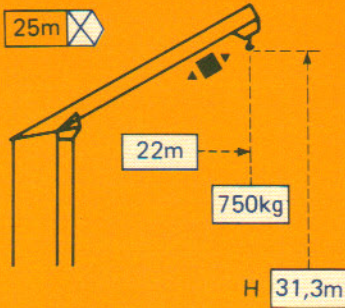
13	14	16	18	20	22	24	25	m
3000	2740	2330	2020	1780	1580	1420	1350	kg

Flèche relevée

Ausleger in Steilstellung

Luffing jib

Flecha izada

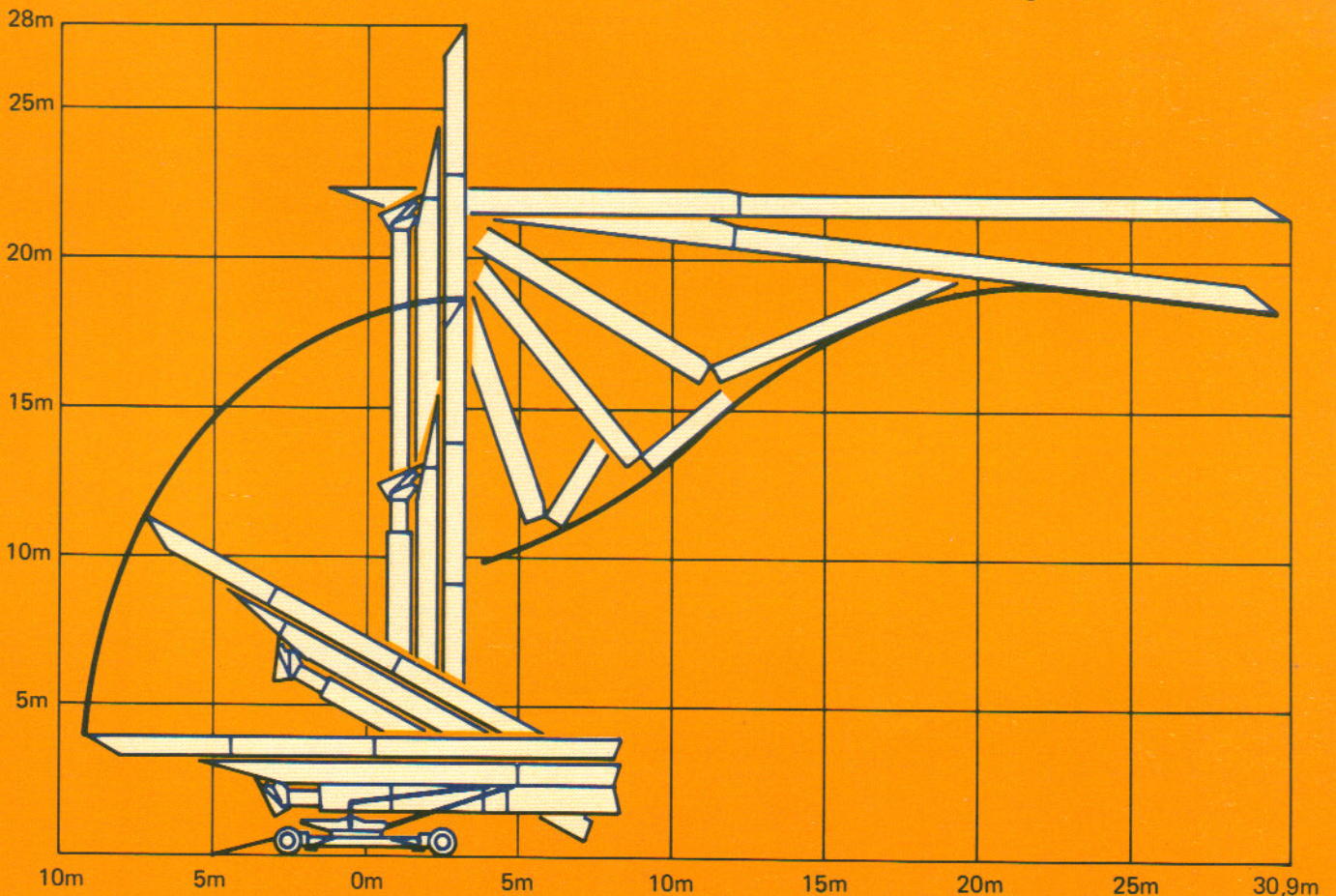


Montage

Montage

Erection

Montaje

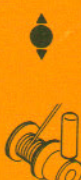
















Mécanismes

Antriebe

Mechanisms

Mecanismos

				m/min	kg	ch-PS hp	kW
Levage Heben Hoisting Elevación	15 TDPC 10 			8	1500	5	3,7
				25	1500	15	11
				50	1000		
				4	3000	5	3,7
				12,5	3000	15	11
				25	2000		
Distribution - Katzfahren Trolleying - Distribución		3D1 V5	35		4,5	3,3	
		3D2 V5	22 - 44		4,5	3,3	
Orientation - Schwenken Slewing - Orientación		RCV 20	0 → 1 tr/min U/min-rpm		3	2,2	
Translation - Kranfahren Travelling - Traslación		TVD 121	25			2 x 1,4	2 x 1
Réseau - Netzstrom - Mains supply - Red						380V - 50 HZ	
Puissance électrique nécessaire - Anschlusswert - Necessary electric power - Potencia eléctrica necesaria						20 KVA	
Groupe électrogène - Stromaggregat - Generator set - Grupo electrogeno						*	

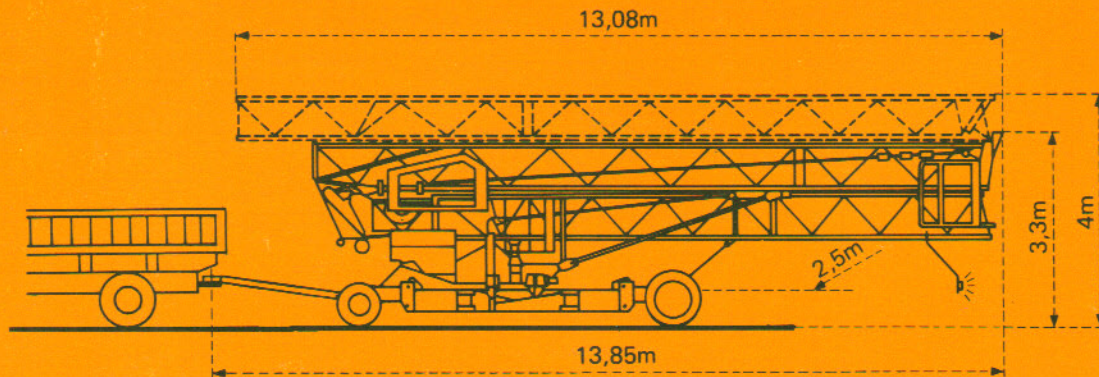
*Nous consulter - Auf Anfrage - Consult us - Consultarnos

Transport

Transport

Transport

Transporte



Version tractée derrière camion
 Ausführung als LKW Anhänger
 Lorry towed version

Versión remolcable detrás de un camión

Version semi-portée : Nous consulter
 Ausführung als Sattelaufzieger : Auf Anfrage
 Tractor towed version : Consult us
 Versión en semi-remolque : Consultarnos

Conforme à la directive CEE 84/534 sur le niveau acoustique - Gemäss EWG-Richtlinie 84/534 über Schall-Leistungspegel
 In compliance with the EEC 84/534 Instruction on noise level - Conforme con la directiva CEE 84/534 sobre el nivel acústico

NF E 52081 - 82

DIN 15018 H1 B3

POTAIN 

18, rue de Charbonnières, B.P. 173-F 69132 ECULLY Cedex
 Tél. 72.20.20.20 - Télex 330 179 - Télex. Export 375 213 -
 Fax 72 20 20 00

POTAIN GmbH 6082 MÖRFELDEN WALLDORF
 Nordendstr. 79-87 - Postfach 420
 Tél. 06 105 704.0 - Télex 4.1857 45

GMR 326 D

Réf. 1988.44 KX1

Modifications réservées - Änderungen vorbehalten - Subject to modification - Modificaciones reservadas

Printed in France