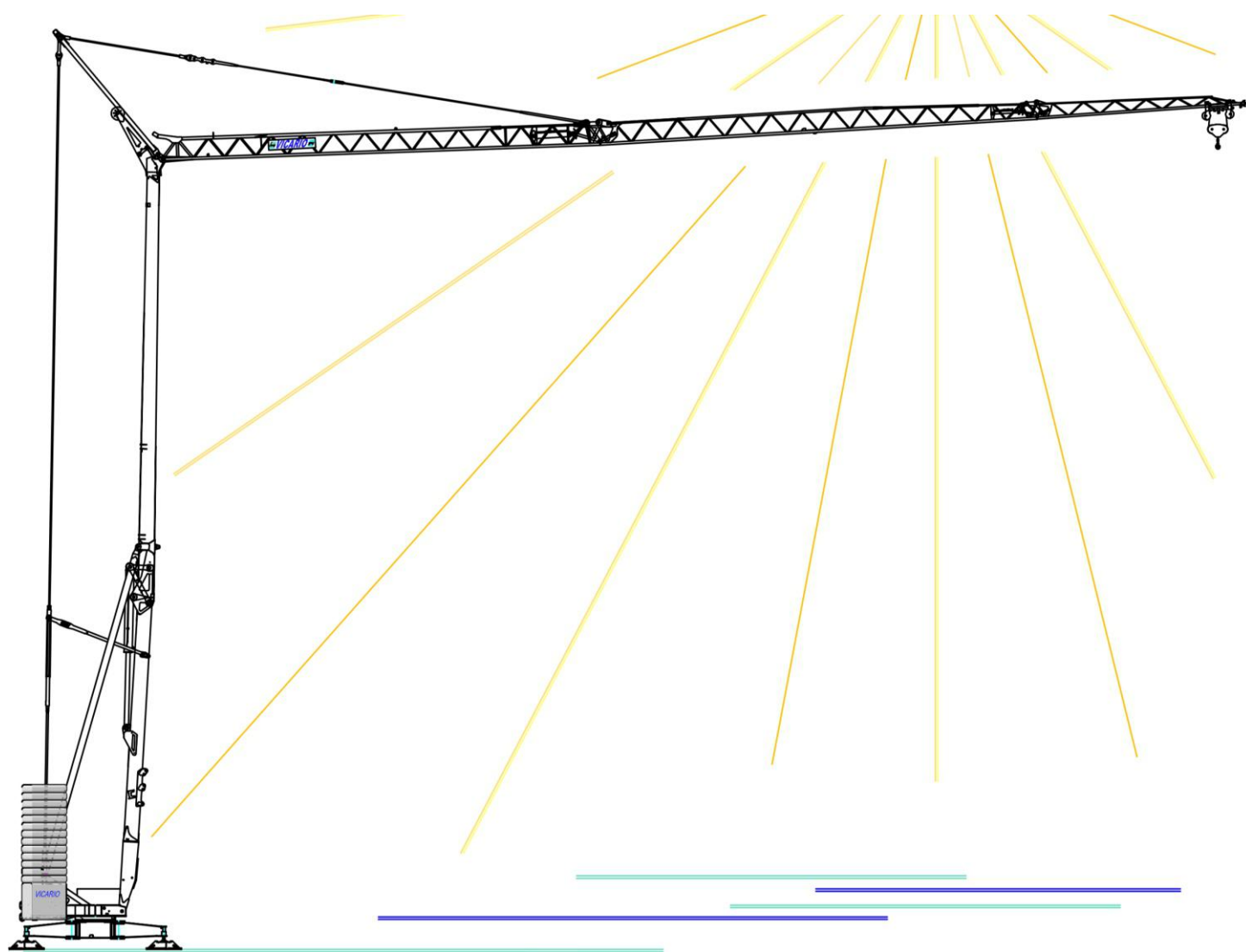


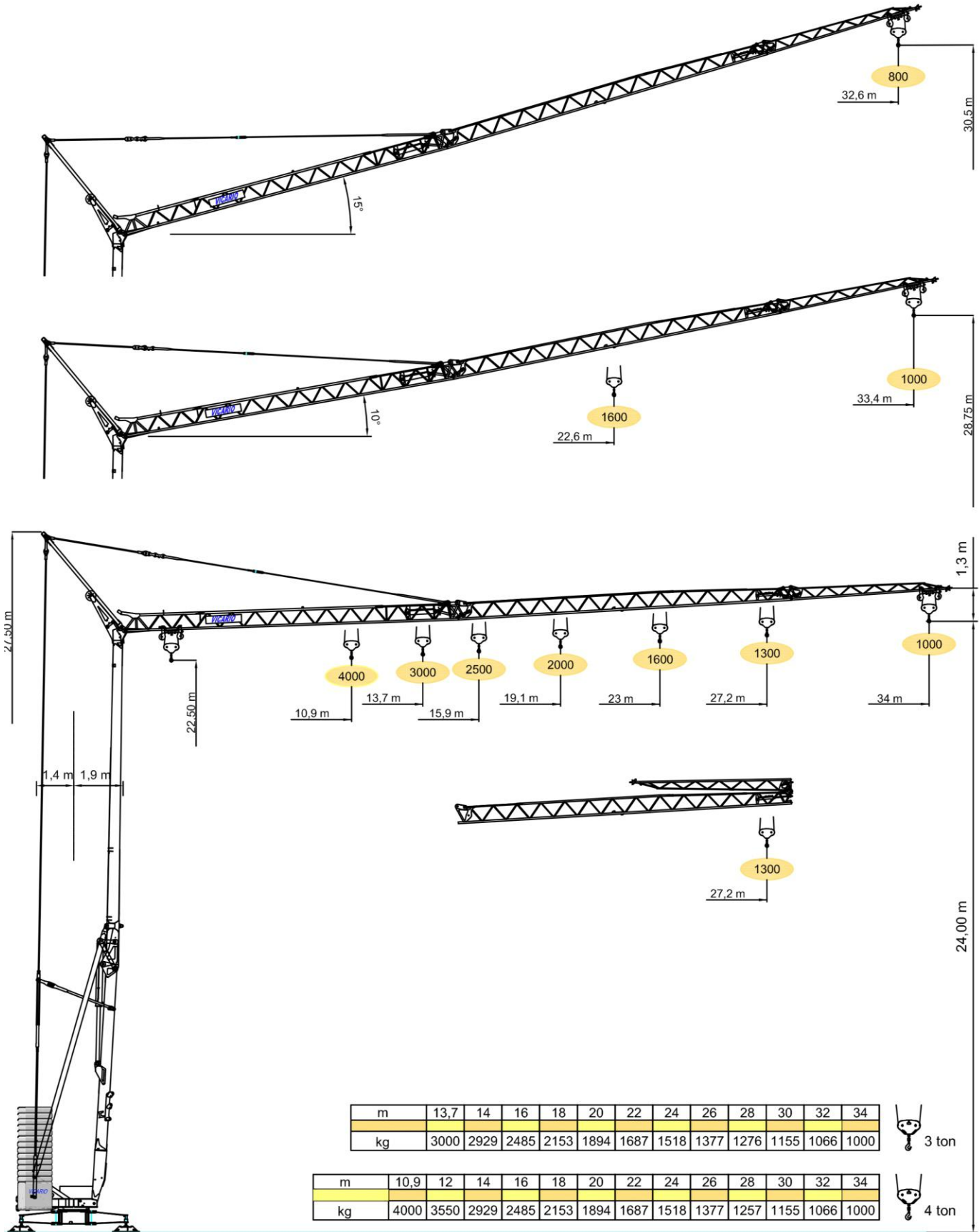
# VICARIO 0MV 34 A



Oficjalny dystrybutor na Polskę



Zakłady Mechaniczne Vicario S.p.a.  
Specyfikacja może ulec zmianie bez wcześniejszego powiadomienia.




m	13,7	14	16	18	20	22	24	26	28	30	32	34
kg	3000	2929	2485	2153	1894	1687	1518	1377	1276	1155	1066	1000




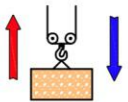




m	10,9	12	14	16	18	20	22	24	26	28	30	32	34
kg	4000	3550	2929	2485	2153	1894	1687	1518	1377	1257	1155	1066	1000

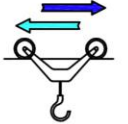





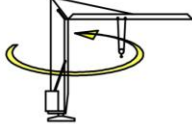



 Wyposażenie seryjne





4 prędkości (biegi) podnoszenia sterowane płynnie falownikiem, 3 prędkości obrotu i wodzenia sterowane falownikiem, ocynkowana konstrukcja i naciąg, balast, unoszony wysięgnik, wodzak z silnikiem i wyłącznikiem krańcowym umieszczonym u podstawy wieży, możliwość pracy ze skróconym wysięgnikiem, wbudowane sterowanie radiowe, przycisk awaryjny, ostona chroniąca tożysko oporowe i mechanizmy, przygotowanie do samobalastowania, skrzynka elektryczna ze stali nierdzewnej, dokumentacja zgodna z normami EWG


	400V (±10%) 50 Hz	18kVA
---	----------------------	-------

	m/l'				
	kg	6,3	21	31	48
	kW	4000	4000	1400	1400
15 (Inverter)					

	m/l'			
	kg	17.8	28.6	53.5 (↗39.3)
	kW	3 (Inverter)		

	n/l'			
	kg	0.17	0.42	0.85
	kW	3,7 (Inverter)		

	min			15.190 kg		5.200 kg + 16.900 kg
	kW	12				

	5200 kg	2600 kg	0 kg
P1	8750 kg 8020 kg *	6616 kg 5916 kg *	4483 kg 3811 kg *
P2	11690 kg 12420 kg *	11224 kg 11924 kg *	10757 kg 11429 kg *

 DOTAZIONE DI SERIE

Sollevamento "overdrive" a quattro velocità con inverter, rotazione e carrello a tre velocità con inverter, zincatura della struttura e dei tiranti, contrappeso, braccio impennabile, carrello rampante con motore e finecorsa alla base della torre, funzionamento con braccio ripiegato, comando a pulsantiera via cavo, carter di protezione per ralla e meccanismi, predisposizione per autozavorrimento e radiocomando, armadio elettrico in acciaio inox, documentazione a norme CEE.

 STANDARD FEATURES

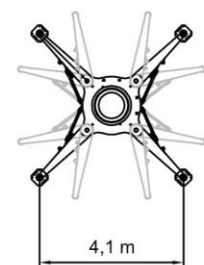
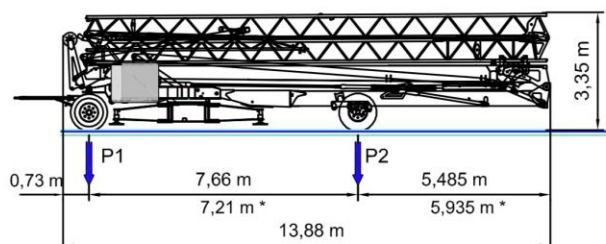
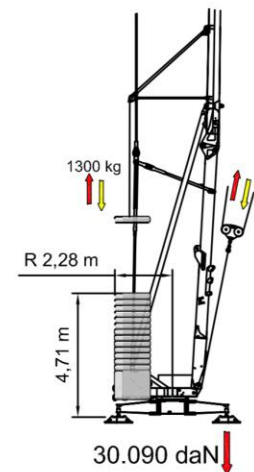
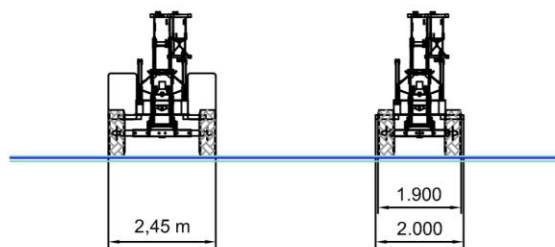
4-speed lifting, 3-speed rotation and trolley with inverter control, galvanised structure, counterweight, pull-up jib, translation trolley with motor and limit switch at base of gantry, operation with folden jib, cable-operated pushbutton remote control, guard for slewing ring and mechanisms, designed to allow installation of self-ballasting device and radio control, stainless steel electrical cabinet, documentation in accordance with EU standards.

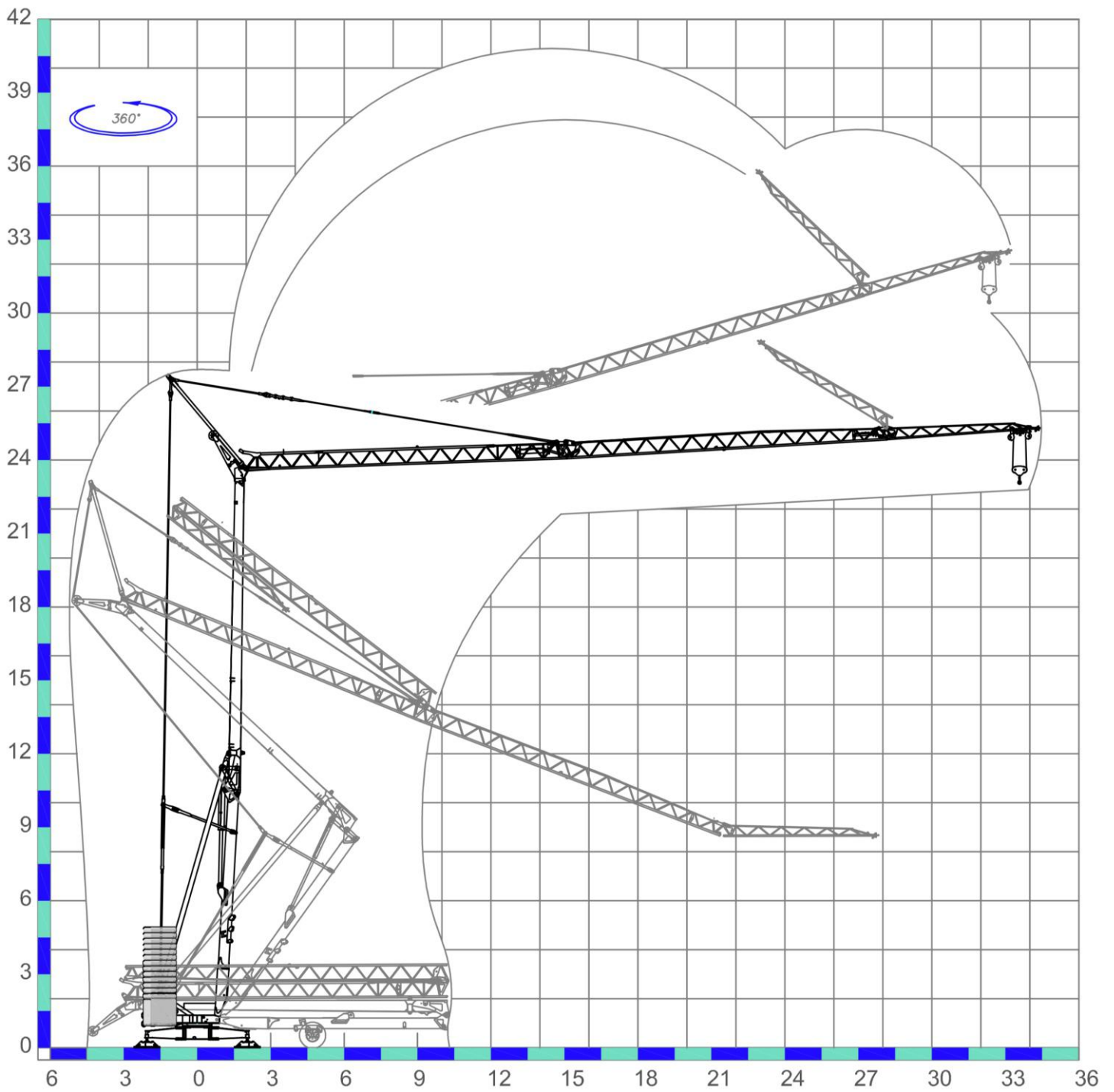
 EQUIPEMENT DE SERIE

Levage à quatre vitesses, chariot et rotation à trois vitesses à contrôle électronique, galvanisation de la structure et des tirants, contrepois, flèche relevable, moteur de chariot et fin de course à la base de la tour, fonctionnement bras replié, commande par câble, carter de protection pour la couronne et les mécanismes, predisposition pour autolestage et commande radio, armoire électrique en acier inox, documentation conforme aux normes CEE.

 SERIENAUSSTATTUNG

Heben mit vier Geschwindigkeiten, Laufkatze und Rotation mit drei Geschwindigkeiten, Strukturverzinkung, Gegengewicht, hochklappbarer Arm, aufsteigender Wagen mit Motor und Anschlag an der Basis des Turms, Funktionieren mit eingeklapptem Arm, Steuerung mit Druckknopftafe via Kabel, Schutzvorrichtungen für Drehverbindungen und Mechanismen, Vorbereitung für Selbstballasteinahme und Funksteuerung, elektrischer Schrank aus rostfreiem Stahl, Dokumentation gemäß EC Vorschriften.





**International Machinery Stock**

ul. Rogowska 9  
 54 -440 Wrocław  
 tel. +48 71 715 61 03  
 e-mail: [biuro@ims24.pl](mailto:biuro@ims24.pl)  
 www: [ims24.pl](http://ims24.pl)

Pieczętka:

