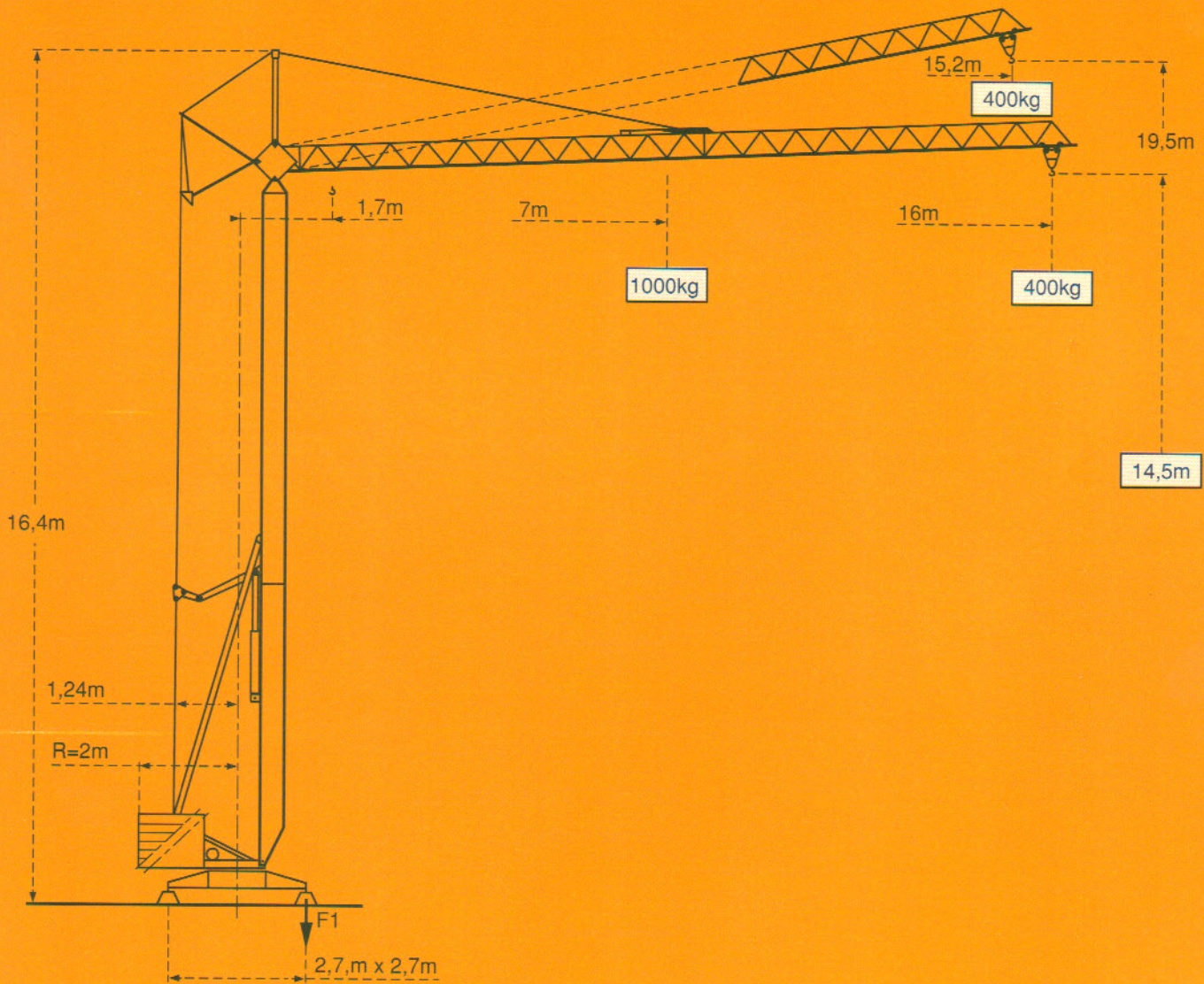



GMH 416

POTAIN 
FERGRU



F1 = Réactions Eckdrücke Reactions Reacciones Reazioni

F1	● 5,05 t	■
	3,5 t	


- En service
- Hors service


- In Betrieb
- Ausser Betrieb


- In service
- Out of service


- En servicio
- Fuera de servicio


- In servizio
- Fuori servizio

 A vide sans lest ni train de transport, avec flèche et hauteur maximum.

 Ohne Last, Ballast und Transportachse, mit Maximalausleger und Maximalhöhe.

 Without load, ballast or transport axles, with maximum jib and maximum height.

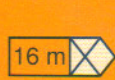
 Sin carga, sin lastra, ni tren de transporte, flecha y altura máximas.

 A vuoto, senza zavorra ne assali di trasporto con braccio massimo e altezza massima.

Courbes de charges Lastkurven Load diagrams
Curvas de cargas Curve di carico



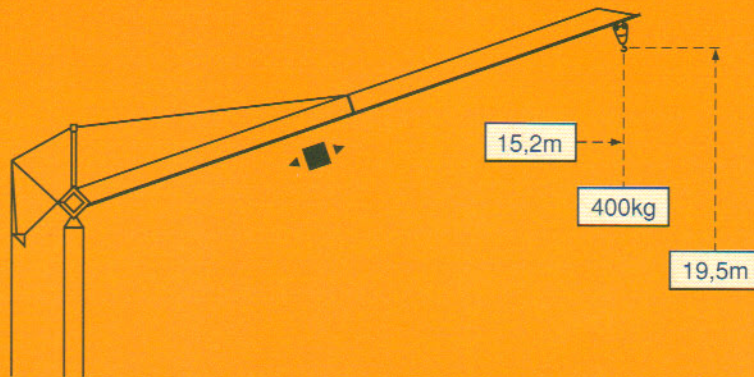
Flèche Ausleger Jib Flecha Braccio



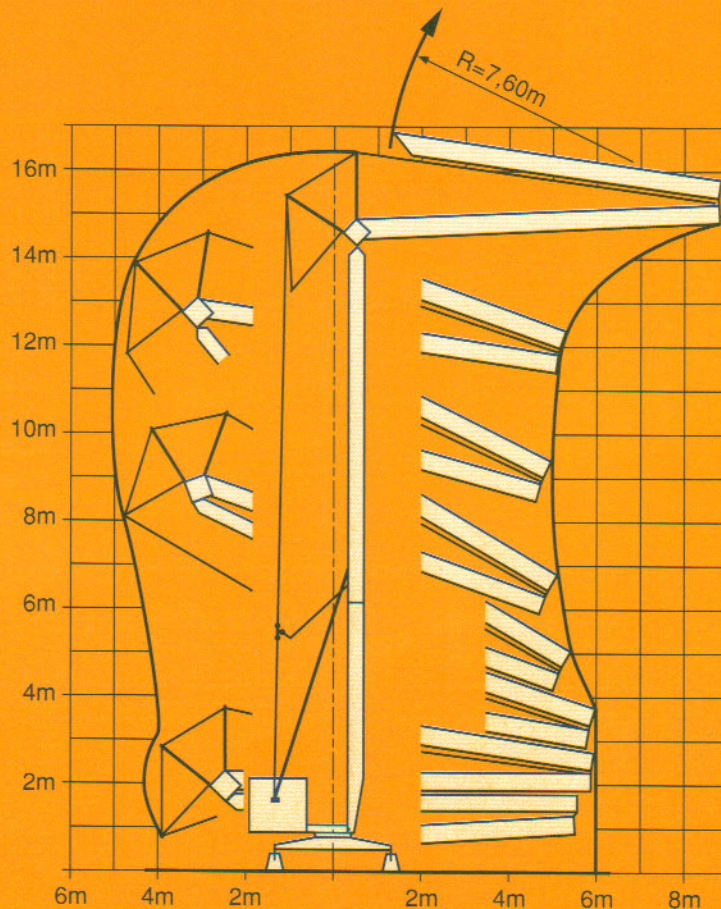
	7	9	10	11	12	13	14	15	16	m
16 m	1000	765	680	610	555	505	465	430	400	Kg

Flèche relevée Ausleger in Steilstellung Luffing jib
Flecha izada Braccio impennato








◀ ■ ▶
 Chariot distributeur
 Verfahrbare Laufkatze
 Traversing trolley
 Carro distribuidor
 Carrellino distributore



Montage Montage Erection Montaje Montaggio



Mécanismes Antriebe Mechanisms Mecanismos Meccanismi

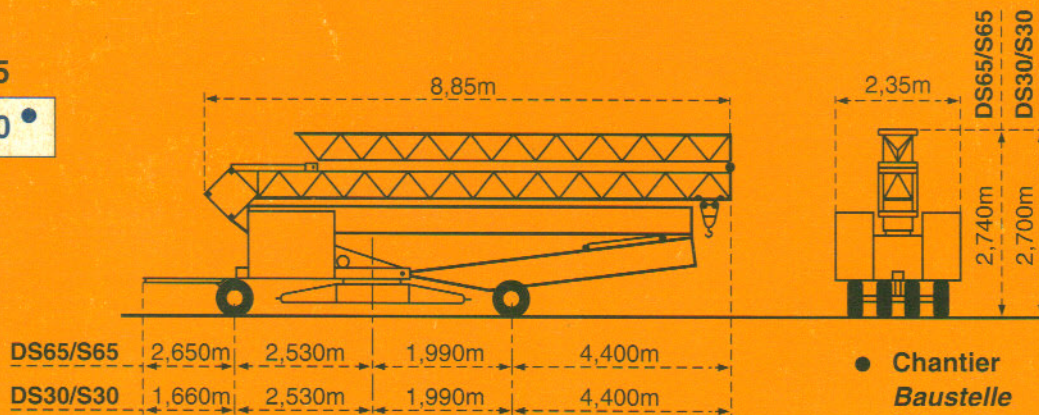
				m/min	kg	ch-PS hp	kW
Levage Heben Hoisting Elevación Sollevamento		220V		11,2	1000	2,2	1,6
				22,5	500	2,2	1,6
		380V		14	1000	4	2,9
				28	500	5	3,6
Distribution - <i>Katzfahren</i> - Trolleying Distribución - Distribuzione				30		1,5	1,1
Orientation - <i>Schwenken</i> - Slewing Orientación - Rotazione				1 tr/min U/min-rpm		0,6	0,4
Réseau - <i>Netzstrom</i> - Mains supply - <i>Red</i> - Reta elettrica						220 V 50 Hz	380 V 50 Hz
Puissance électrique nécessaire - <i>Anschlusswert</i> - Necessary electric power <i>Potencia eléctrica necesaria</i> - Potenza elettrica necessaria						5 kVA	7 kVA
Groupe électrogène - <i>Stromaggregat</i> - Generator set - <i>Grupo electrogeno</i> - Gruppo elettrogeno						*	

* Nous consulter - *Auf Anfrage* - Consult us - *Consultarnos* - Consultateci

Transport *Transport* Transport *Transporte* Trasporto

DS65/S65

DS30/S30 •



- Chantier
Baustelle
Site
Obra
Cantiere

Conforme à la directive CEE 84/534 sur le niveau acoustique - *Gemäss EWG-Richtlinie 84/534 über Schall-Leistungspegel*
 In compliance with the EEC 84/534 Instruction on noise level - *Conforme con la direttiva CEE 84/534 sobre el nivel acustico*
 Conforme colla direttiva CEE 84/534 sul livello acustico.

NF E 52081 - 82
 DIN 15018.H1 B3

POTAIN 

18, rue de Charbonnières, B.P. 173-F 69132 ECULLY Cedex
 Tél. 72.20.20.20 - Télex 330 179 - Télex. Export 375 213 -
 Fax 72.20.20.00

POTAIN GmbH 6082 MÖRFELDEN WALLDORF
 Nordendstr. 79-87 - Postfach 420
 Tél. 06 105 704.0 - Télex 4.1857 45

GMH 416

Ref. 1990 - 43 - LAW 4

Modifications réservées - Änderungen vorbehalten - Subject to modification - Modificaciones reservadas - Modifiche riservate

Printed in France

Réalisation SODIPE