

GTMR 331B

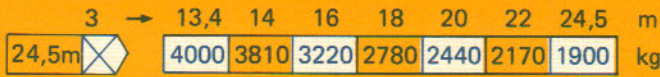
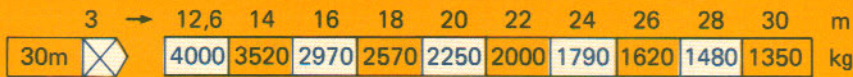
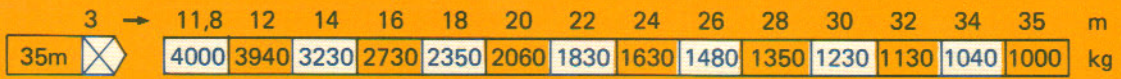
POTAIN 

Courbes de charges

Lastkurven

Load diagrams

Curvas de cargas

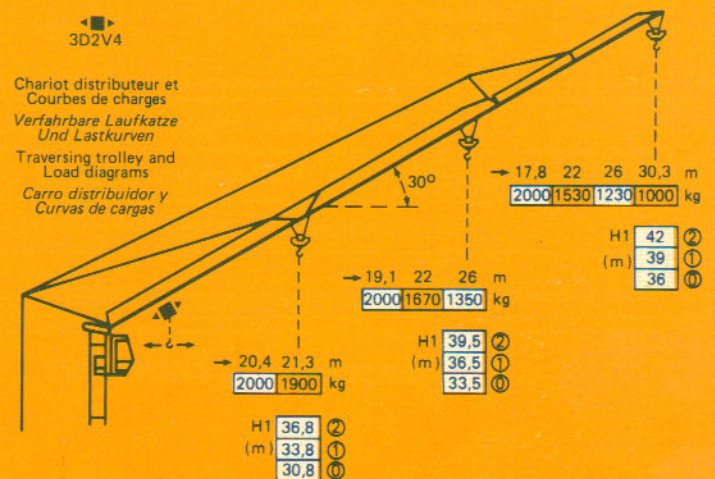
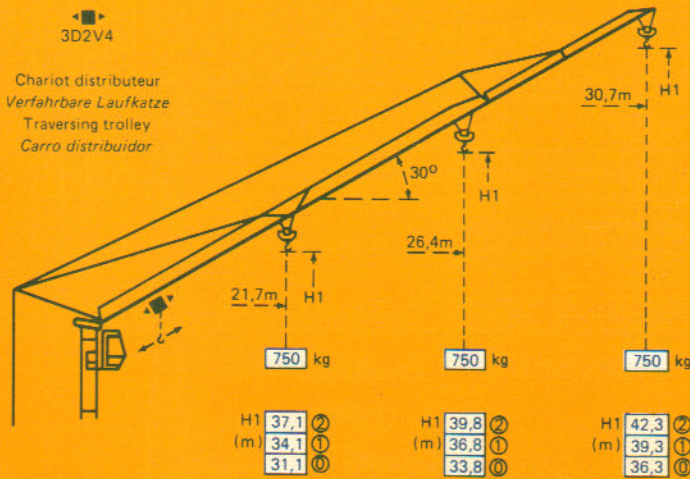


Flèche relevée

Ausleger in Steilstellung

Luffing jib

Flecha izada

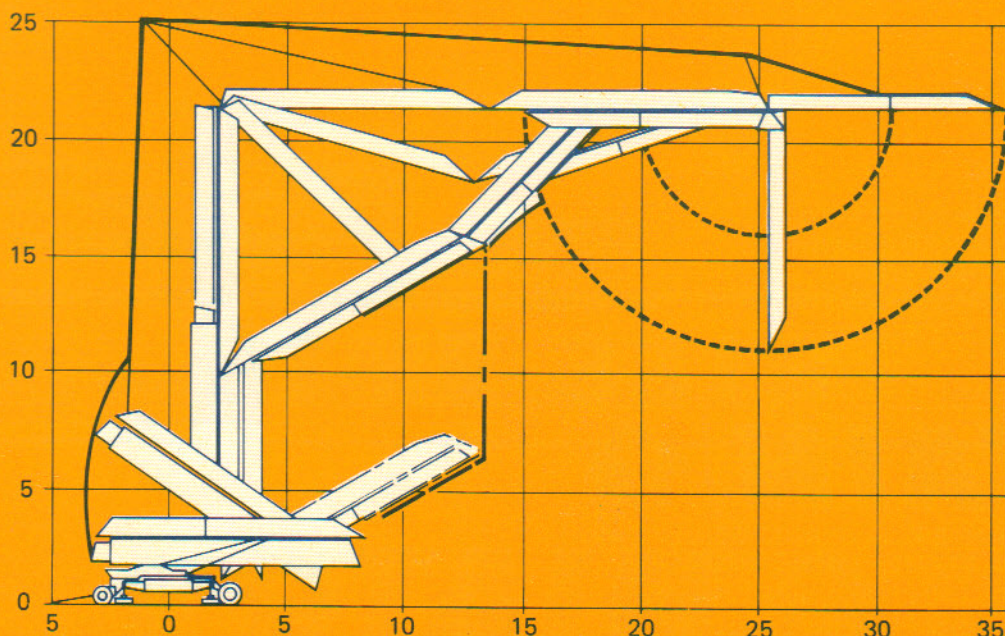


Montage

Montage

Erection

Montaje


















Mécanismes

Antriebe

Mechanisms

Mecanismos

				m/min	kg	ch - PS hp	kW
Levage Heben Hoisting Elevación	15 TDPC 10 			8	2000	5	3,7
				25	2000	15	11
				50	1000		
				4	4000	5	3,7
				12,5	4000	15	11
				25	2000		
Distribution - Katzfahren Trolleying - Distribución		3 D2 V4	22-44		4	3	
Orientation - Schwenken Slewing - Orientación		RCV 22	0 → 0,8 tr/min U/min-rpm		3	2,2	
Translation - Kranfahren Travelling - Traslación		TVD 122	25		2 x 2	2 x 1,5	
Réseau - Netzstrom - Mains supply - Red						380V - 50 HZ	
Puissance électrique nécessaire - Anschlusswert - Necessary electric power - Potencia eléctrica necesaria						20 KVA	
Groupe électrogène - Stommaggregat - Generator set - Grupo electrogeno						*	

* Nous consulter - Auf Anfrage - Consult us - Consultarnos

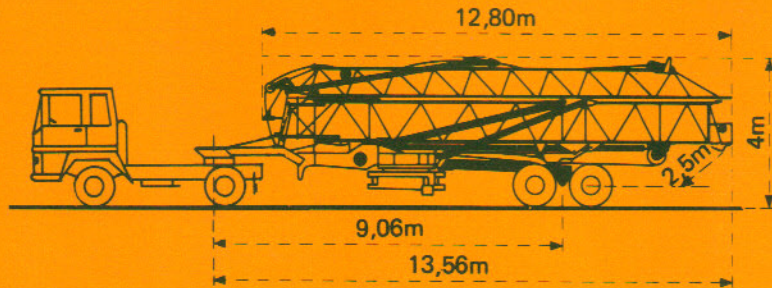
Transport

Transport

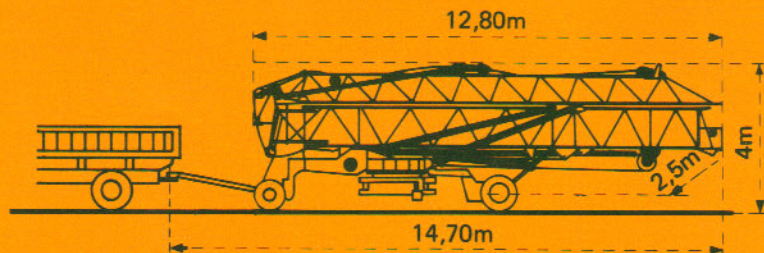
Transport

Transporte

Version semi-portée
Ausführung als Sattelaufliieger
Tractor towed version
Versión en semi-remolque



Version tractée derrière camion
Ausführung als LKW Anhänger
Lorry towed version
Versión remolcable detrás de un camión



Conforme à la directive CEE 84/534 sur le niveau acoustique - Gemäss EWG-Richtlinie 84/534 über Schall-Leistungspegel
In compliance with the EEC 84/534 Instruction on noise level - Conforme con la directiva CEE 84/534 sobre el nivel acústico

NF E 52081 - 82

DIN 15018 H1 B3

POTAIN 

18, rue de Charbonnières, B.P. 173-F 69132 ECULLY Cedex
Tél. 72.20.20.20 - Télex 330 179 - Télex. Export 375 213 -
Fax 72 20 20 00

POTAIN GmbH 6082 MÖRFELDEN WALLDORF
Nordendstr. 79-87 - Postfach 420
Tél. 06 105 704.0 - Télex 4.1857 45

GTMR 331B

Réf. 1989.07 KXW 5

Modifications réservées - Änderungen vorbehalten - Subject to modification - Modificaciones reservadas

Printed in France