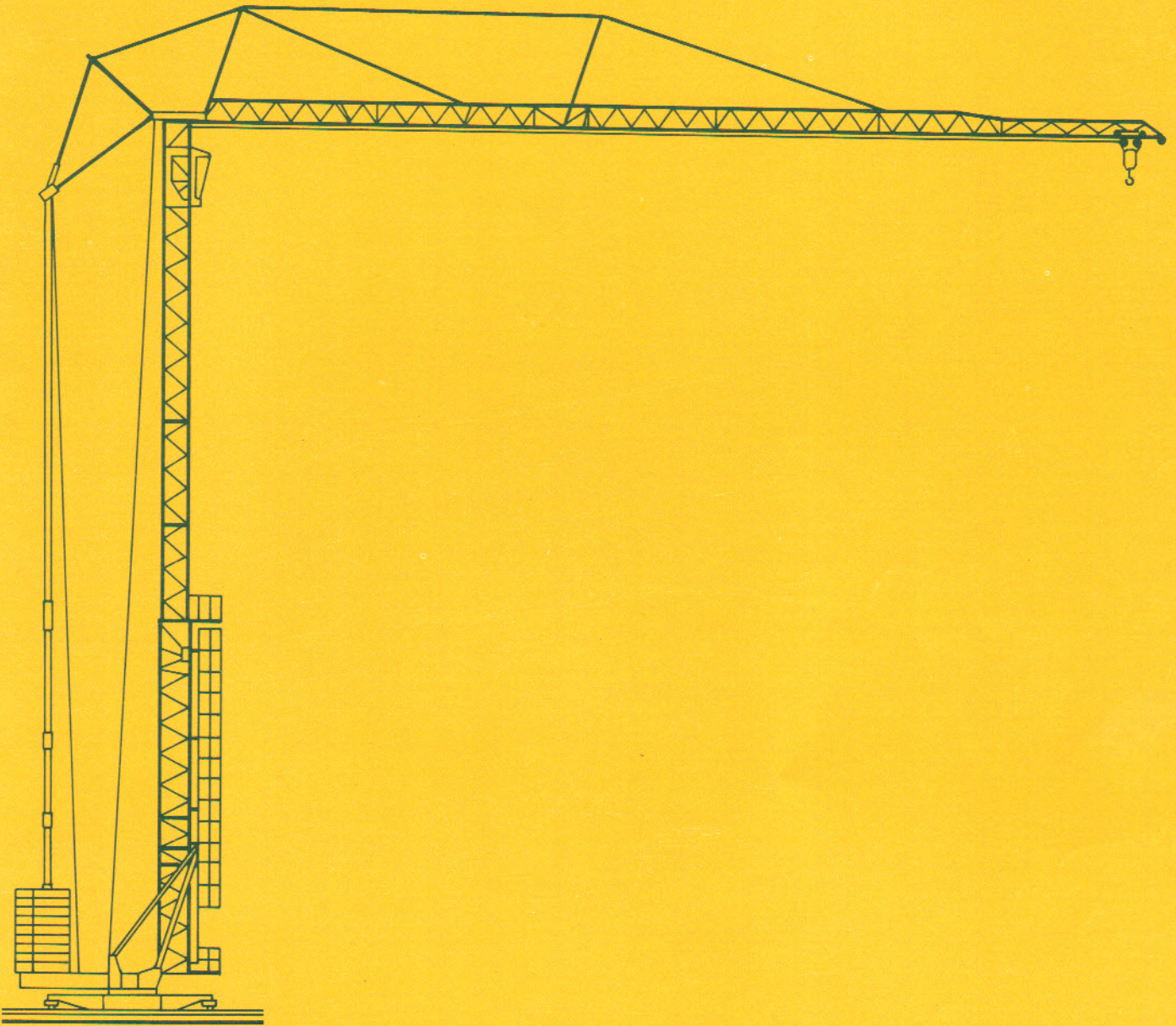


GTMR 334A



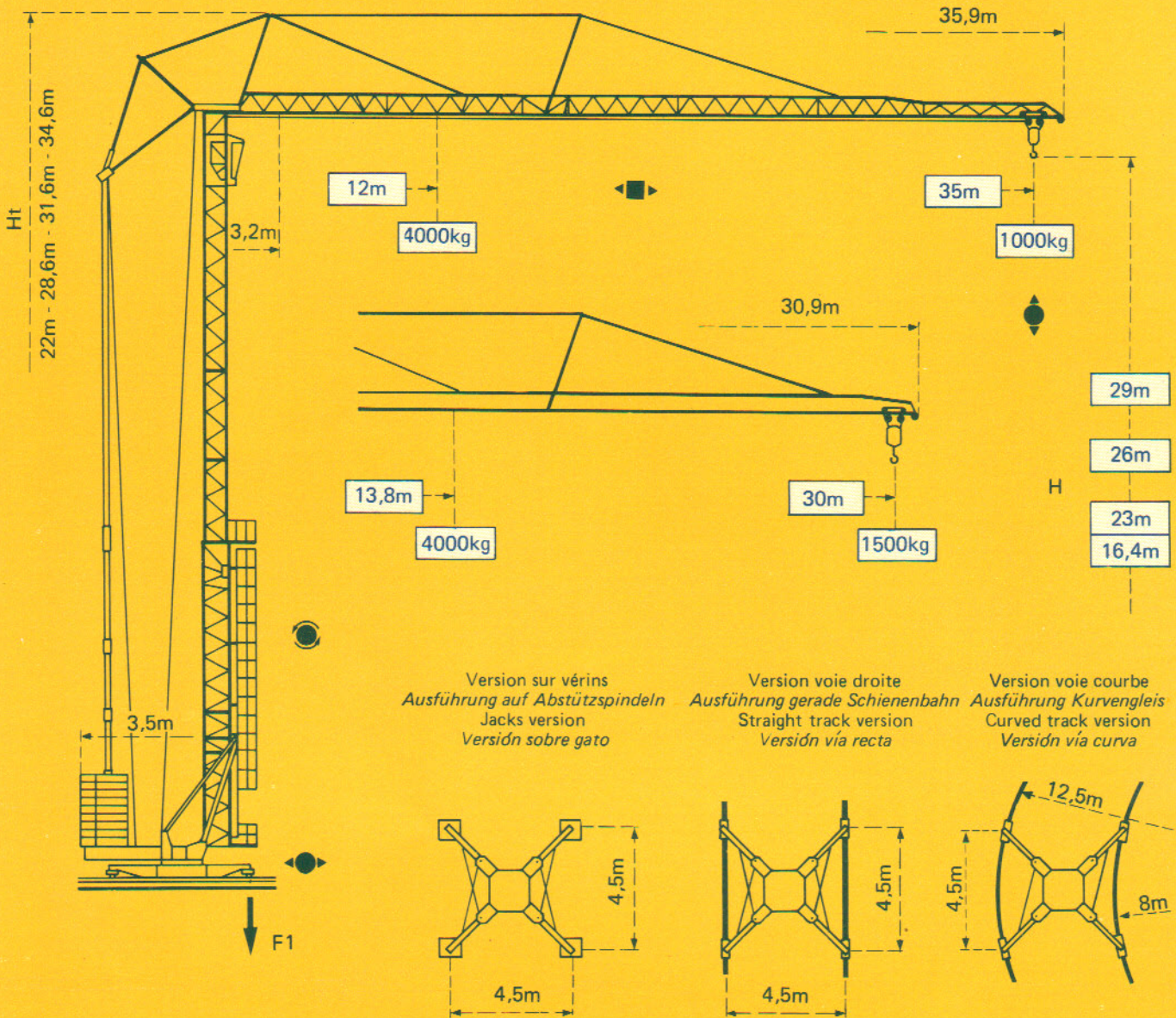
GTMR 334A

Potain



Potain GTMR 334A

Cotes Abmessungen Dimensions Dimensiones



Version sur vérins
Ausführung auf Abstützspindeln
Jacks version
Versión sobre gato

Version voie droite
Ausführung gerade Schienenbahn
Straight track version
Versión vía recta

Version voie courbe
Ausführung Kurvengleis
Curved track version
Versión vía curva

F1 = Réactions Eckdrücke Reactions Reacciones

F1	● 218 kN	■ 190 kN
	17,1 t	

● En service
■ Hors service

A vide sans lest ni train de transport, avec flèche et hauteur maximum.

● In Betrieb
■ Ausser Betrieb

Ohne Last, Ballast und Transportachse, mit Maximalausleger und Maximalhöhe.

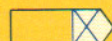
● In service
■ Out of service


Without load, ballast or transport axles, with maximum jib and maximum height.


● En servicio
■ Fuera de servicio

Sin carga, sin lastre, ni tren de transporte, flecha y altura máximas.

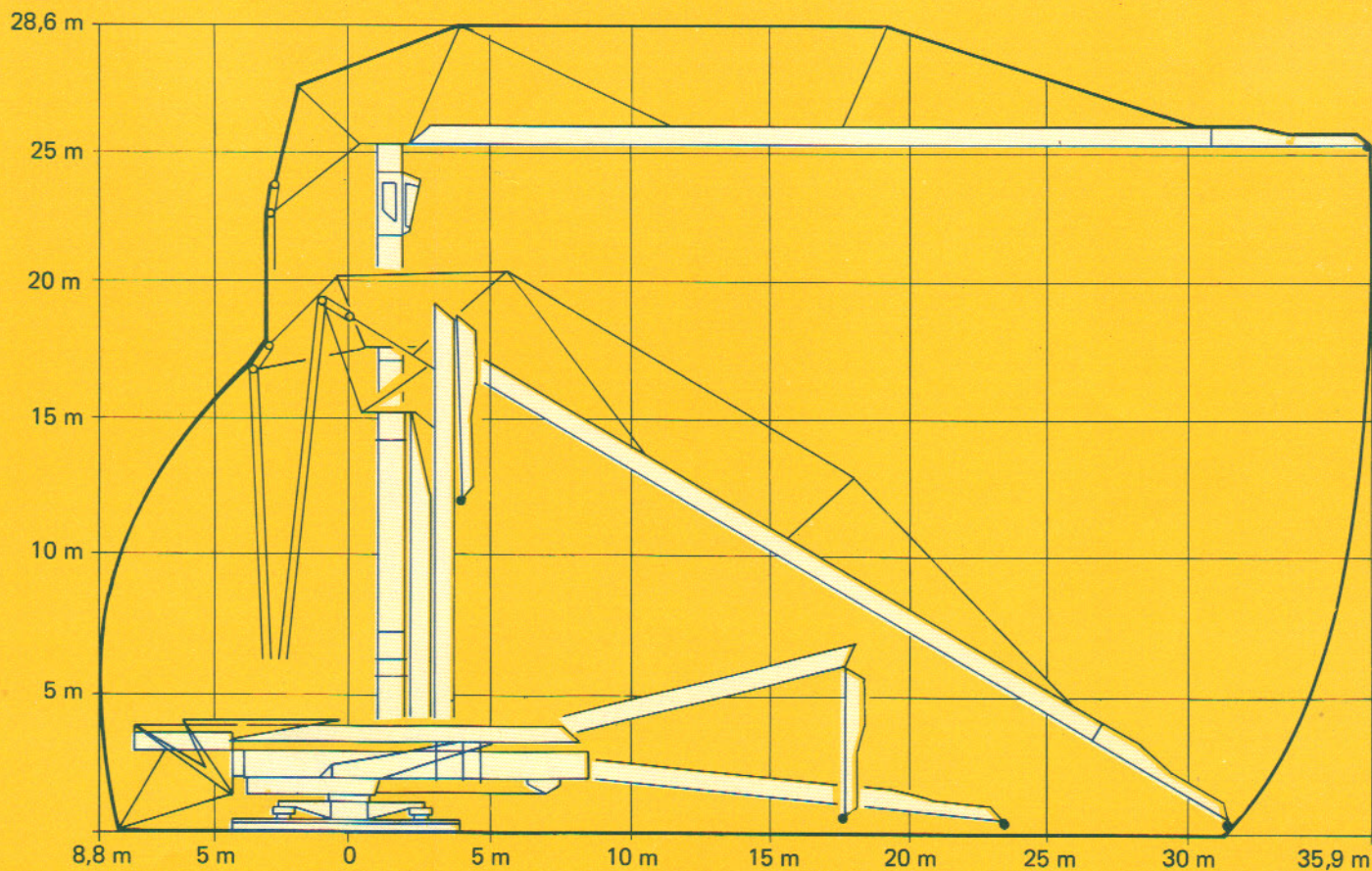
Courbes de charges Lastkurven Load curves Curvas de cargas

 Flèche Ausleger Jib Flecha














3,2 →	12	14	16	18	20	22	24	26	28	30	32	34	35	m
35m 	4000	3300	2780	2390	2090	1850	1650	1490	1350	1230	1130	1040	1000	kg

3,2 →	13,8	14	16	18	20	22	24	26	28	30	m
30m 	4000	3930	3320	2860	2510	2220	1990	1800	1640	1500	kg

Montage Montage Erection Montaje

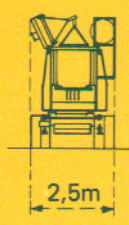
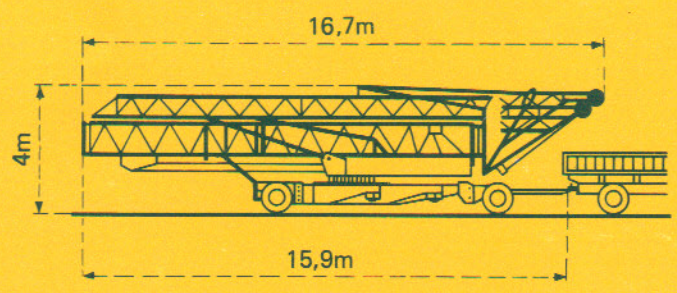


Mécanismes *Antriebe* Mechanisms *Mecanismos*

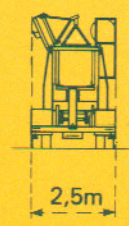
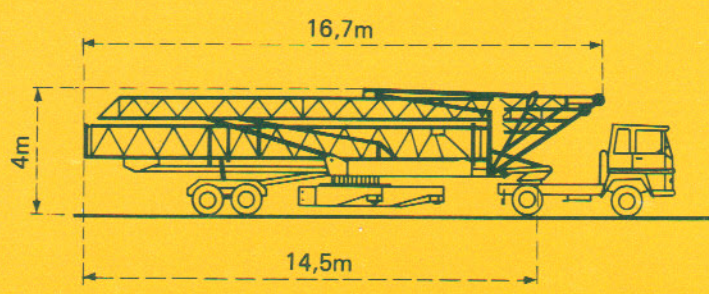
				m/min.	kg	ch-PS hp	kW
Levage Heben Hoisting Elevación	 PC15			6	2000	3,5	2,5
				25	2000	15	11
				50	1000		
				3	4000	3,5	2,5
				12,5	4000	15	11
				25	2000		
Distribution - <i>Katzfahren</i> Trolleying - <i>Distribución</i>		DV 31	35		4	2,9	
Orientation - <i>Schwenken</i> Slewing - <i>Orientación</i>		RCO 21	0,3 - 1 tr/min U/min-rpm		3	2,2	
Translation - <i>Kranfahren</i> Travelling - <i>Traslación</i>		TVD 322	30		2 x 2	2 x 1,5	
		TB 222					
Puissance électrique nécessaire Anschlusswert Necessary electric power Potencia eléctrica necesaria	380 V 50 HZ 	Réseau - <i>Netzstrom</i> - Mains supply - <i>Red</i>				20 kVA	
		Groupe électrogène - <i>Stromaggregat</i> Generator set - <i>Grupo electrogeno</i>				Nous consulter Auf Anfrage Consult us Consultarnos	

Transport *Transport* Transport *Transporte*

Version tractée derrière camion
Ausführung als LKW-Anhänger
 Lorry towed version
Versión remolcable detrás de un camión



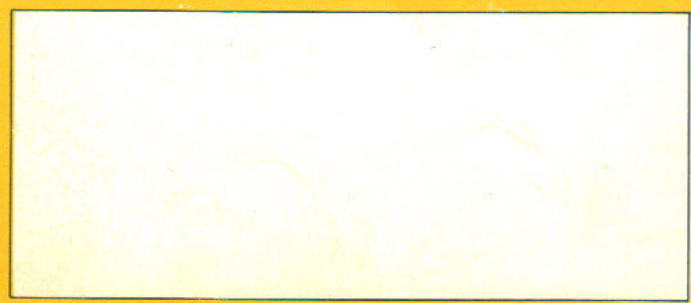
Version semi-portée
Ausführung als Sattelaufliieger
 Tractor towed version
Versión en semi-remolque



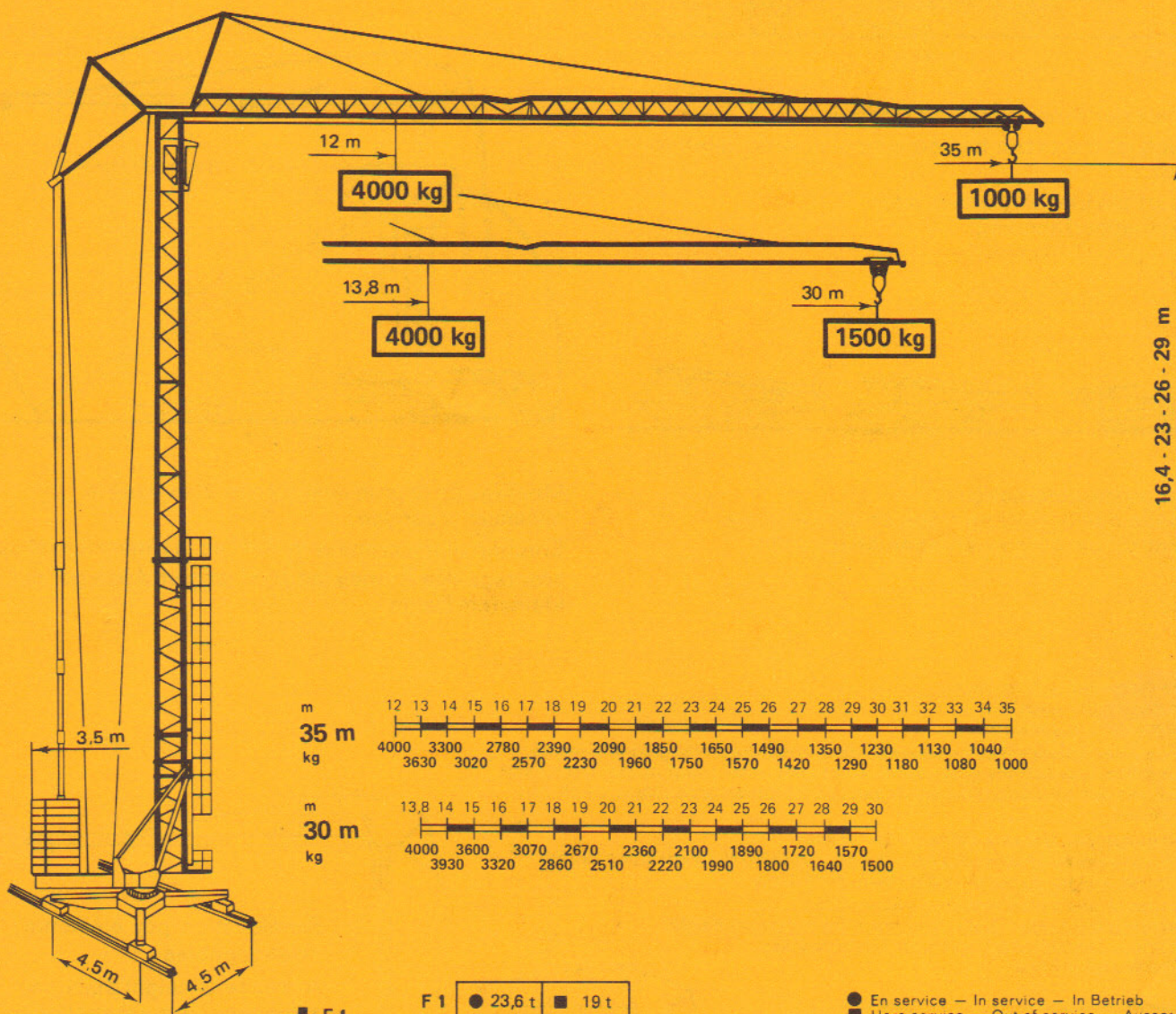
DIN 15018 H1 B3



18, rue de Charbonnières B.P 173 - F 69130 ECULLY
 Tél. (7) 833.81.81 Télex 330 179
 EXPORT. 89 Av. du Pdt Roosevelt - CHEVILLY - LARUE
 F 94150 RUNGIS - Tél. (1) 687.22.23 - Télex 270001
 POTAIN GmbH - D 6082 MÖRFELDEN - WALLDORF
 Nordendstr. 79-87 - Postfach 420 - Tel. (6 105) 5091 - Telex 4 185745
 POTAIN SUISSE S.A. - CH 5115 MÖRIKEN WILDEGG
 Tel. 64.53.19.91 - Telex 68294



















Modifications réservées - *Anderungen vorbehalten* - Subject to modification - *Modificaciones reservadas*
 Rév. 8036 EY G 1
 Printed in France

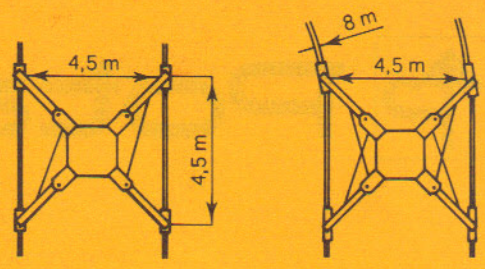
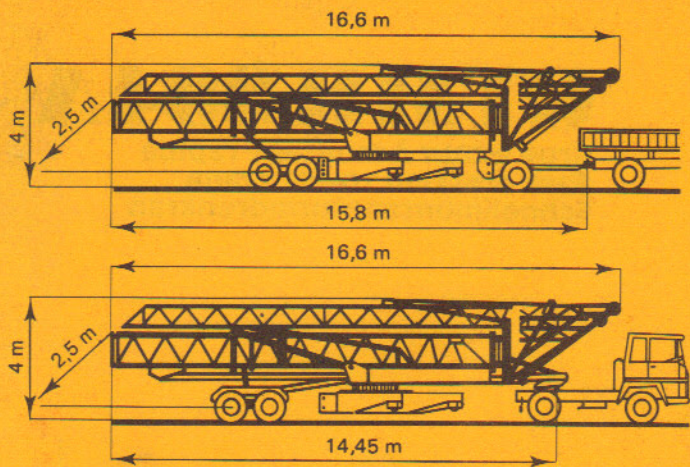


La hauteur est approximative. Cherchez en pointe de flèche la plus longue, crochet dans la position représentée.
The height is approximate. Look for the longest hook in the position represented.
Die Höhenhöhe ist annähernd. Laufkatze an der Spitze des längsten Auslegers. Haken wie dargestellt.

● En service — In service — In Betrieb
■ Hors service — Out of service — Ausser Betrieb

		m/mn	kg	
 PC 15 15 ch/hp/PS			6	2000
			25	2000
			50	1000
			6	2000
			3	4000
			12,5	4000
			25	2000
			3	4000

	RCO 31	0,3-1 tr/mn r.p.m U/min	4 ch/hp/PS
	DV 31	35 m/min	4 ch/hp/PS
	TVD 322	30 m/min	2x2 ch/hp/PS
	TB 222	30 m/min	2x2 ch/hp/PS
	H. 29 m	- sans lest, sans train - without ballast, - without towing axle - ohne Ballast, - ohne Transportachse	18,1 t
380 V - 50 Hz 	Réseau — Mains supply — Drehstrom		20 KVA
	Groupe électrogène — Generator unit — Stromaggregat		nous consulter consult us bei uns rückfragen

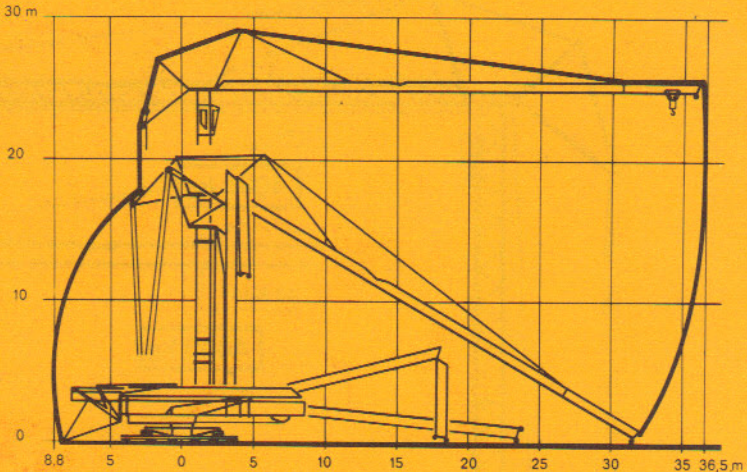
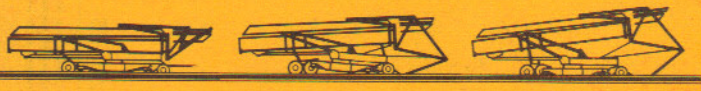


Voie droite
Straight track
Gerade Schienenbahn

Voie courbe
Curved track
Kurvenbahn

Transport derrière camion ou tracteur.
Transport of the crane behind a lorry or articulated to a tractor.

Transport als Lkw-Anhänger oder Sattelzugfahrzeug.



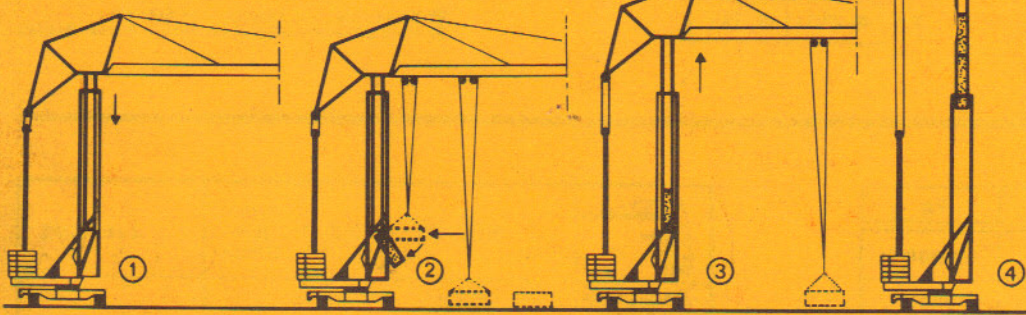
Montage de la grue avec flèche 35 m dans le minimum d'espace.
Erection of the crane with 35 m jib in a minimum of space

Montage des Kranes mit 35 m langem Ausleger auf kleinstem Raum.

Mise à poste automatique.
Automatic positioning on track or screw jacks.

Automatisches Aufgleisen oder Abspindeln.

- ① Fin de l'alignement de la flèche.
Jib in horizontal position.
Ausleger in Horizontalstellung.
- ② Prise de l'élément au sol et introduction dans la mâture par la grue elle-même.
Mast section taken off the ground and introduced in the tower by the crane itself.
Aufnehmen des Mastschusses am Boden und Einführen in den Mast durch den Kran selbst.
- ③ Télescopage par le bas à l'aide de la nacelle.
Height increase by telescoping from the bottom using the mast lifting device.
Aufstocken von unten mit Hilfe der Hebevorrichtung.
- ④ Télescopage des 3 éléments pour hauteur maxi.
Telescoping the 3 mast sections to reach the maximum height.
Aufstocken von 3 Mastschüssen zur Erlangung der maximalen Hakenhöhe.



↑ Surélévation par éléments télescopables.
Increase of height thanks to telescopic mast sections.
Aufstocken durch teleskopierbare Elemente.

Modifications réservées
Subject to modification
Änderungen vorbehalten



B.P. 173 - F 69130 ECULLY - Route de Charbonnières
Tél. (78) 33.81.81+ - Télex 330179

AGENCES :
Paris - Lyon - Marseille - Rennes - Strasbourg - Toulouse - Nancy

EXPORT : 89, Avenue du Président Roosevelt
F 94150 CHEVILLY-LARUE - Tél. (1) 687.22.23 - Télex 270001