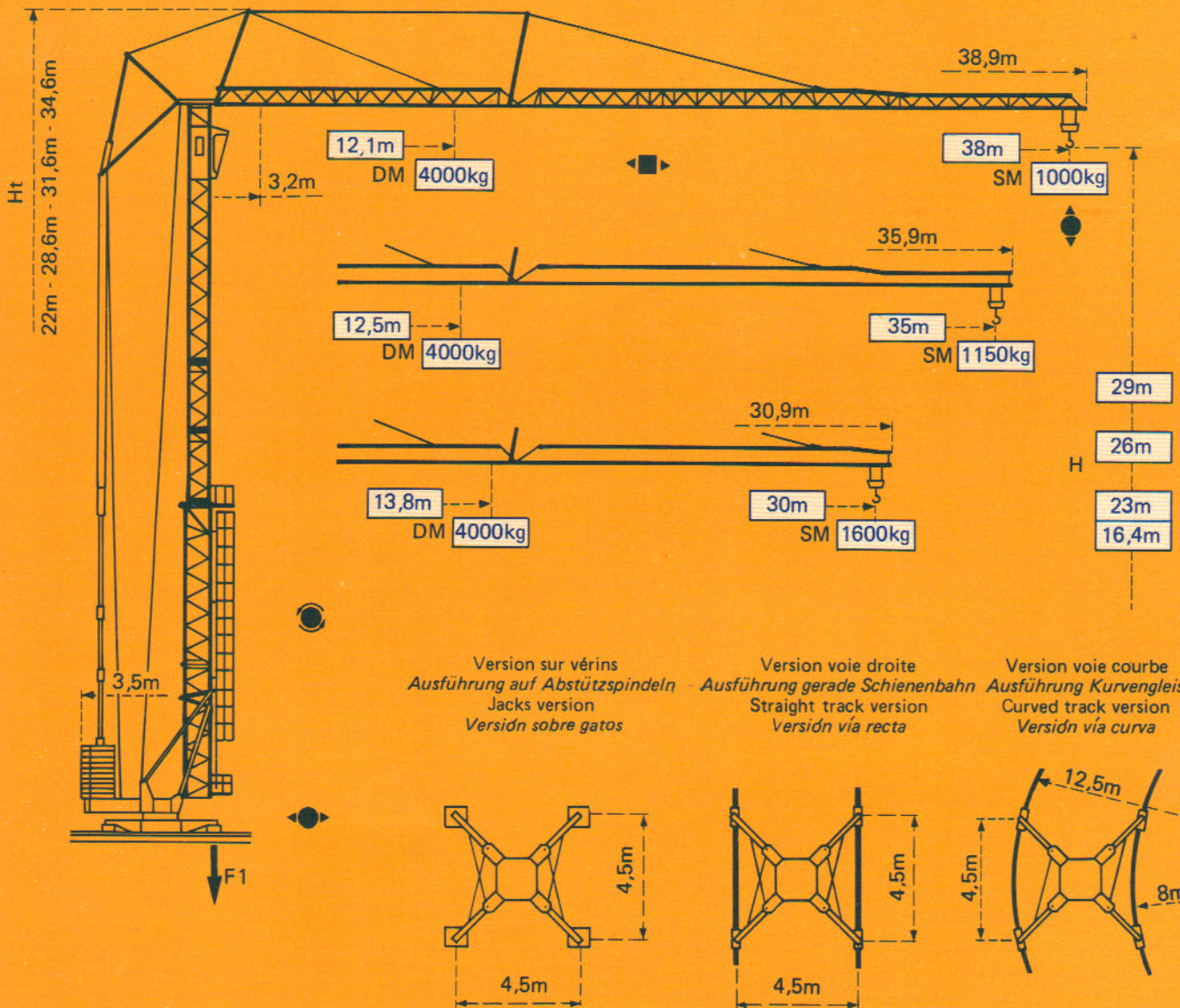


GTMR 334C

POTAIN 



F1 = Réactions Eckdrücke Reactions Reacciones

F1	● 222 kN	■ 191 kN
	17,1 t	

- En service
- Hors service

A vide sans lest ni train de transport, avec flèche et hauteur maximum.

- In Betrieb
- Ausser Betrieb

Ohne Last, Ballast und Transportachse, mit Maximalausleger und Maximalhöhe.

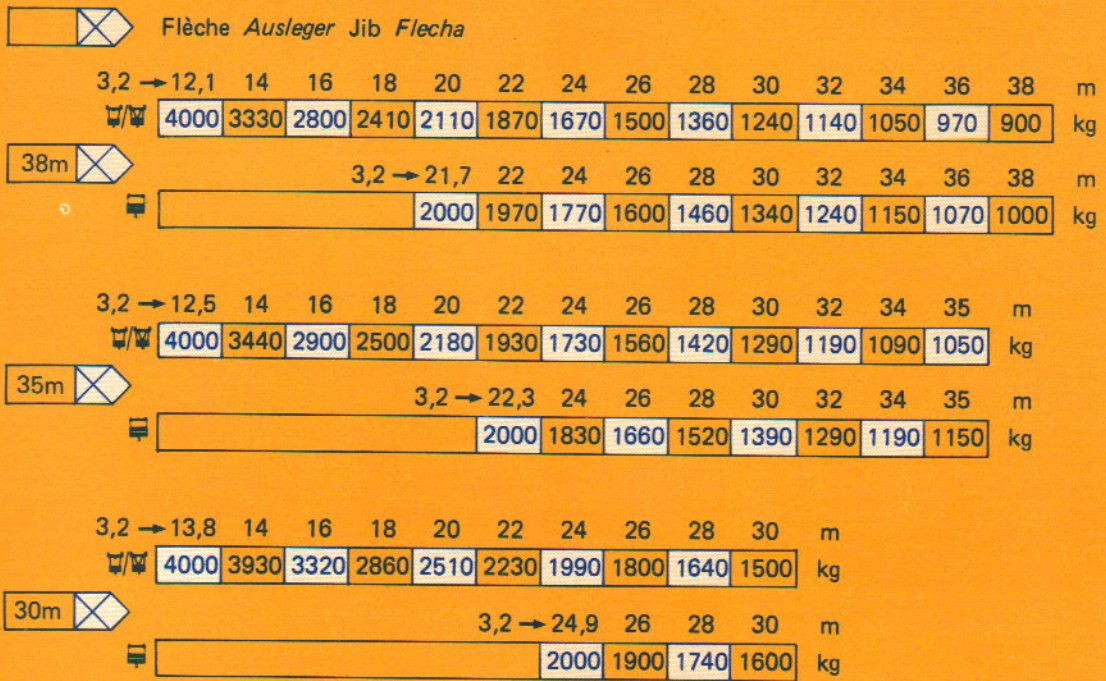
- In service
- Out of service

Without load, ballast or transport axles, with maximum jib and maximum height.

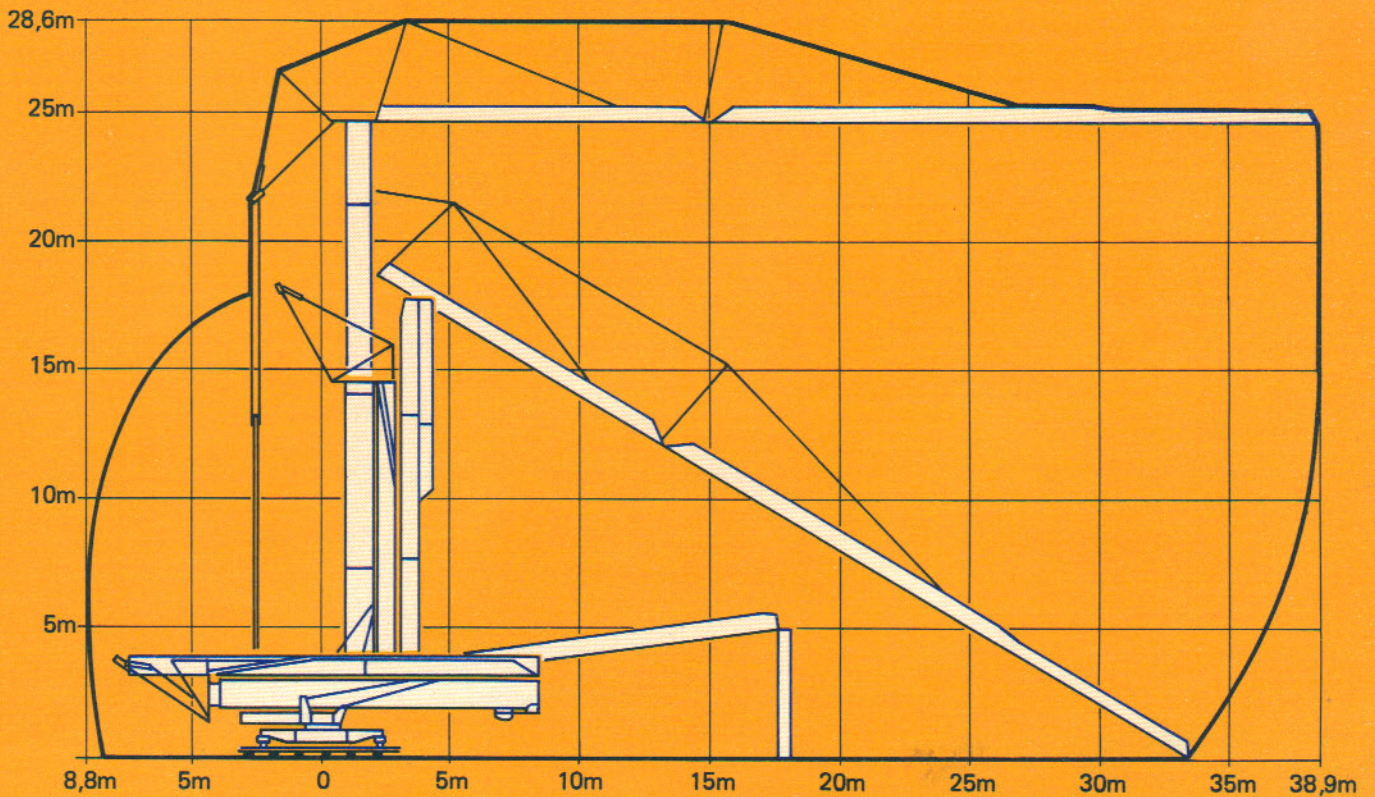
- En servicio
- Fuera de servicio

Sin carga, sin lastre, ni tren de transporte, flecha y altura maximas.

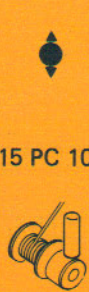















Courbes de charges Lastkurven Load curves Curvas de cargas



Montage Montage Erection Montaje

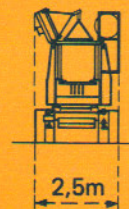
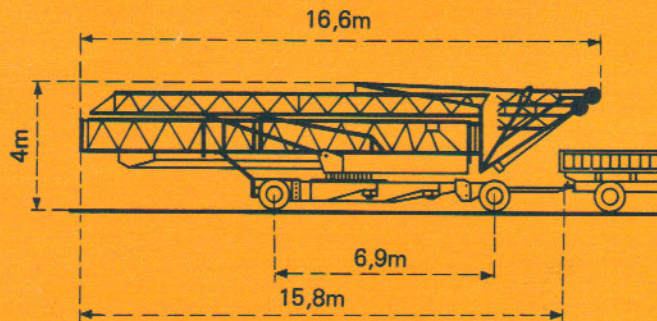


Mécanismes *Antriebe* Mechanisms *Mecanismos*

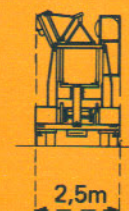
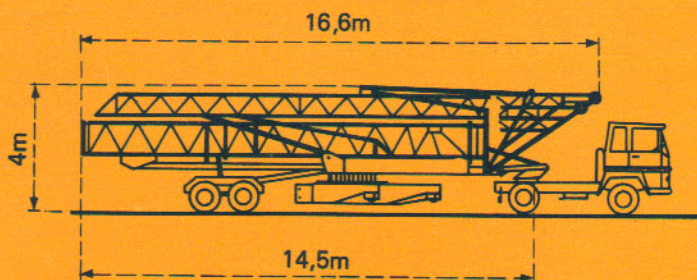
				m/min.	kg	ch-PS hp	kW
Levage Heben Hoisting Elevación				6	2000	3,5	2,5
				25	2000		
				50	1000		
				3	4000	3,5	2,5
				12,5	4000		
				25	2000		
Distribution - <i>Katzfahren</i> Trolleying - <i>Distribución</i>		2D1V2	31,8		4	3	
		2D2V2	14-42		3	2,2	
Orientation - <i>Schwenken</i> Slewing - <i>Orientación</i>		RCO 50	0,15-0,5-1 tr/min U/min-rpm		5	3,7	
Translation - <i>Kranfahren</i> Travelling - <i>Traslación</i>		TVD 122	25			2 x 2	2 x 1,5
		TB 122					
Puissance électrique nécessaire Anschlusswert Necessary electric power Potencia eléctrica necesaria		Réseau - <i>Netzstrom</i> - Mains supply - <i>Red</i>			20 kVA		
		Groupe électrogène - <i>Stromaggregat</i> Generator set - <i>Grupo electrógeno</i>			Nous consulter <i>Auf Anfrage</i> Consult us <i>Consultarnos</i>		

Transport *Transport* Transport *Transporte*

Version tractée derrière
camion
Ausführung als LKW-Anhänger
Lorry towed version
Versión remolcable detrás
de un camión



Version semi-portée
Ausführung als Sattelaufleger
Tractor towed version
Versión en semi-remolque



DIN 15018 H1 B3

POTAIN 

18, rue de Charbonnières B.P 173 - F 69130 ECULLY
Tél. (7) 833.81.81 - Télex 330 179
EXPORT 207, rue de Bercy - Tour MATTEI - 75012 PARIS
Tél. (1) 347.30.77 - Télex 215 483
POTAIN GmbH - D 6082 MÖRFELDEN - WALLDORF
Nordendstr. 79-87 - Postfach 420 - Tel. (6 105) 5091 - Telex 4 185745
POTAIN SUISSE S.A. - CH 5115 MÖRIKEN WILDEGG
Tel. 64.53.19.91 - Telex 68294

Réf. 8152 HCP 2

Modifications réservées. Änderungen vorbehalten. Subject to modification. Modificaciones reservadas. Printed in France