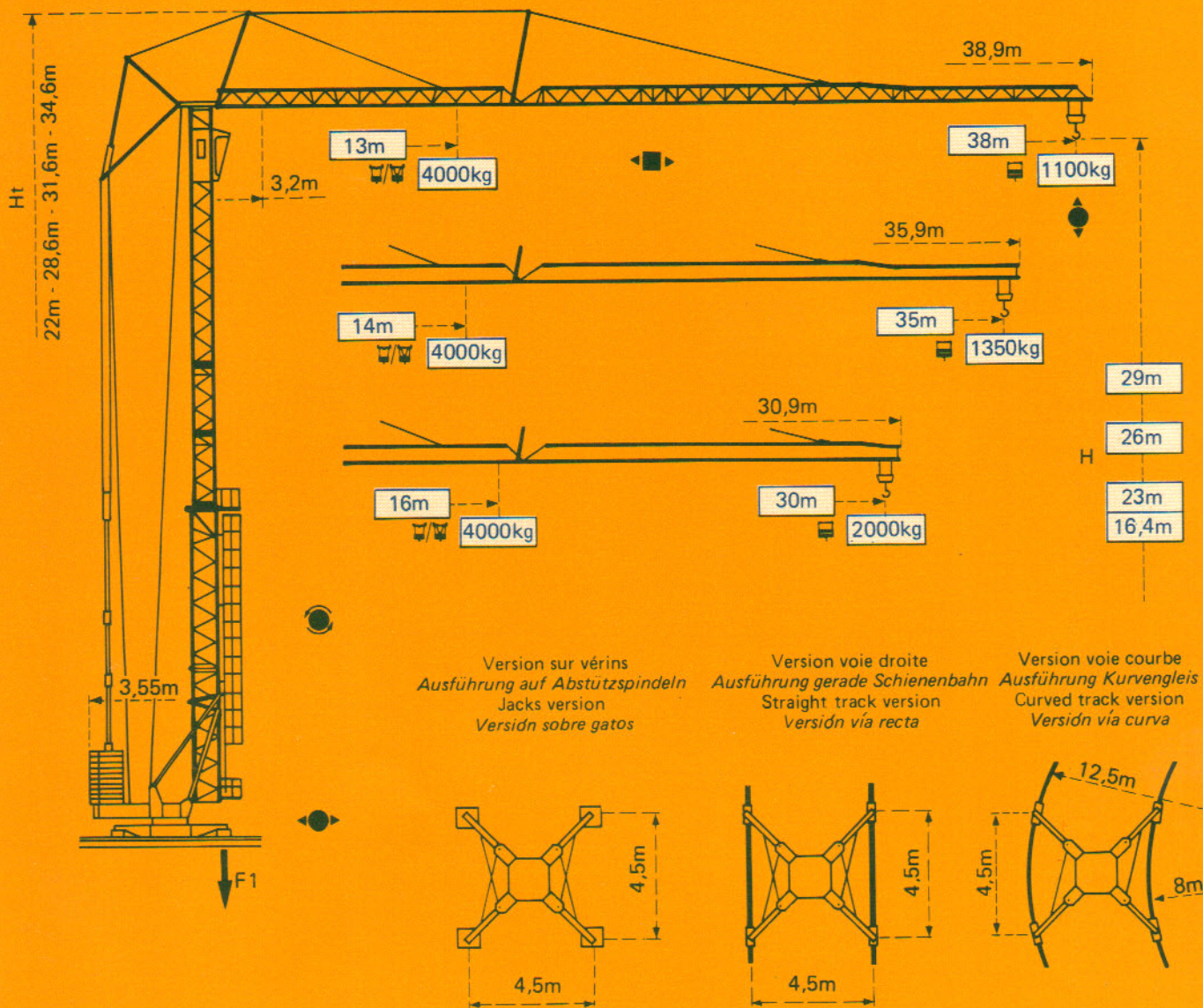


GTMR 334D

POTAIN 



F1 = Réactions Eckdrücke Reactions Reacciones

F1	24 t	17,9 t
	17,3 t	

- En service
- Hors service

A vide sans lest ni train de transport, avec flèche et hauteur maximum.

- In Betrieb
- Ausser Betrieb

Ohne Last, Ballast und Transportachse, mit Maximalausleger und Maximalhöhe.

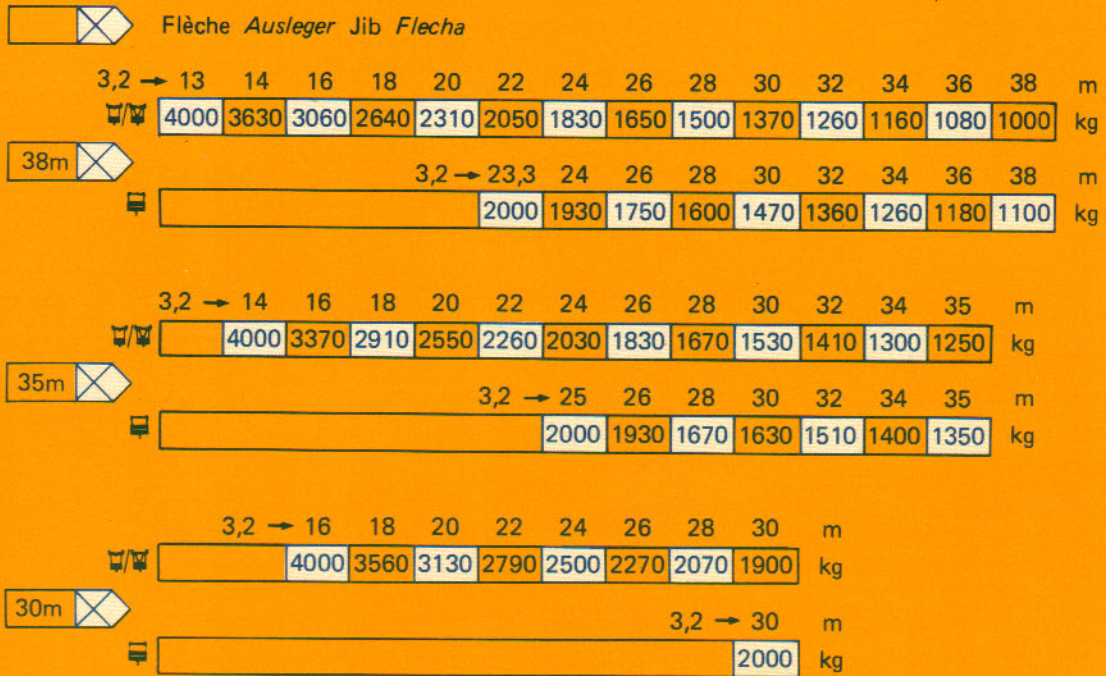
- In service
- Out of service

Without load, ballast or transport axles, with maximum jib and maximum height.

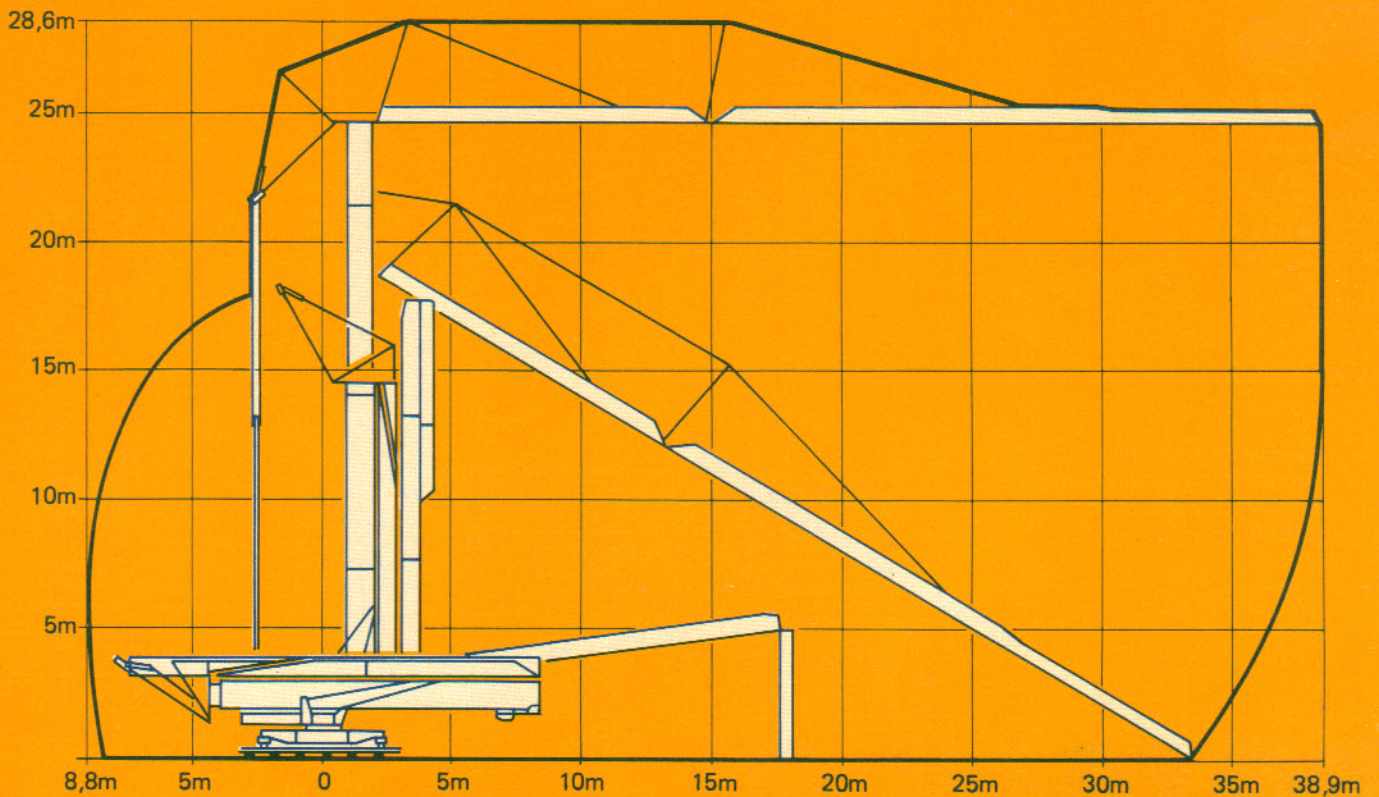
- En servicio
- Fuera de servicio

Sin carga, sin lastre, ni tren de transporte, flecha y altura máximas.
















Courbes de charges *Lastkurven* Load diagrams *Curvas de cargas*



Montage *Montage* Erection *Montaje*



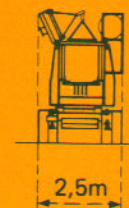
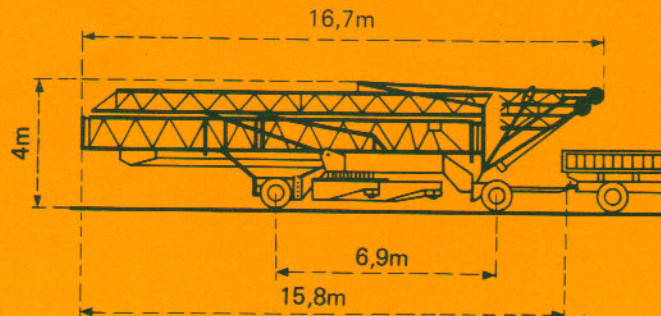
Mécanismes Antriebe Mechanisms Mecanismos

				m/min.	kg	ch-PS hp	kW
Levage Heben Hoisting Elevación	 15 PC 10			6	2000	3,4	2,5
				25	2000	15	11
				50	1000		
				3	4000	3,4	2,5
				12,5	4000	15	11
				25	2000		
Distribution - Katzfahren Trolleying - Distribución		2D1V2	35		4	3	
		2D2V2	14-42		2,7	2	
Orientation - Schwenken Slewing - Orientación		RCO 50	0,16-0,5-1 tr/min U/min-rpm		6,5	4,8	
Translation - Kranfahren Travelling - Traslación		Standard	25			2 x 2	2 x 1,5
		Standard					
Réseau - Netzstrom - Mains supply - Red						380V - 50 HZ	
Puissance électrique nécessaire - Anschlusswert - Necessary electric power - Potencia eléctrica necesaria						20 KVA	
Groupe électrogène - Stromaggregat - Generator set - Grupo electrogeno						*	

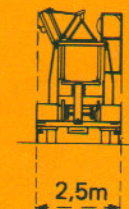
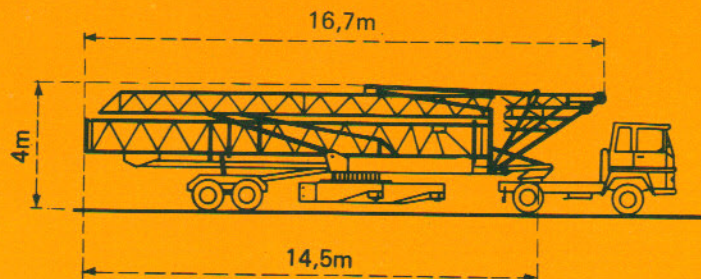
*Nous consulter - Auf Anfrage - Consult us - Consultarnos

Transport Transport Transport Transporte

Version tractée derrière
 camion
 Ausführung als LKW-Anhänger
 Lorry towed version
 Versión remolcable detrás
 de un camión



Version semi-portée
 Ausführung als Sattelaufleger
 Tractor towed version
 Versión en semi-remolque



NF E 52081 - 82

DIN 15018 H1 B3

POTAIN 

18, rue de Charbonnières, B.P. 173-F 69132 ECULLY Cedex
 Tél. 72.20.20.20 - Télex 330 179 - Télex. Export 375 213 -
 Fax 72 20 20 00

POTAIN GmbH 6082 MÖRFELDEN WALLDORF
 Nordendstr. 79-87 - Postfach 420
 Tél. 06 105 704.0 - Télex 4.1857 45

GTMR 334D

Ref. 8442 KMH

Modificaciones reservadas - Änderungen vorbehalten - Subject to modification - Modificaciones reservadas
 Preis in Fr.