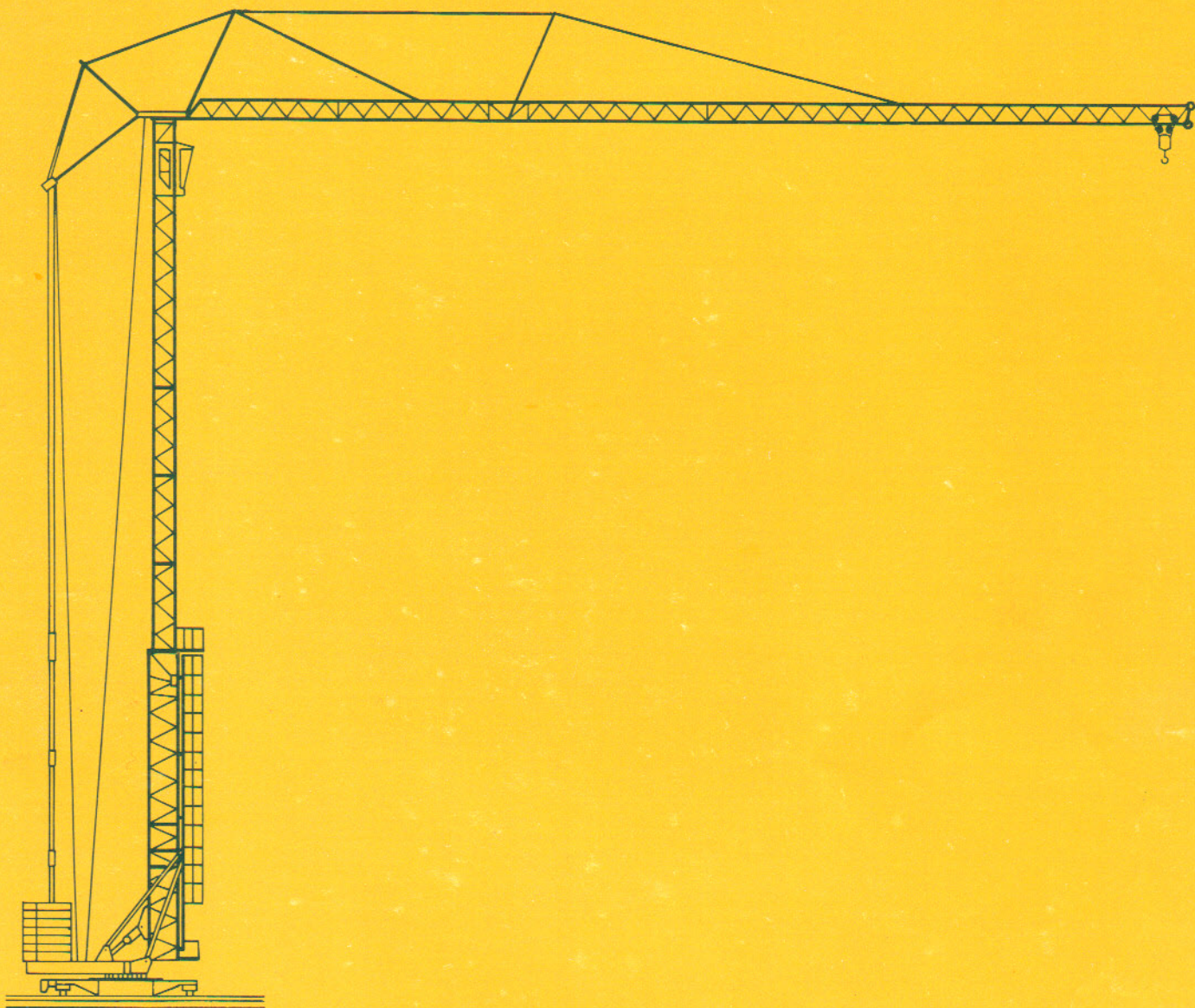


GTMR 340B



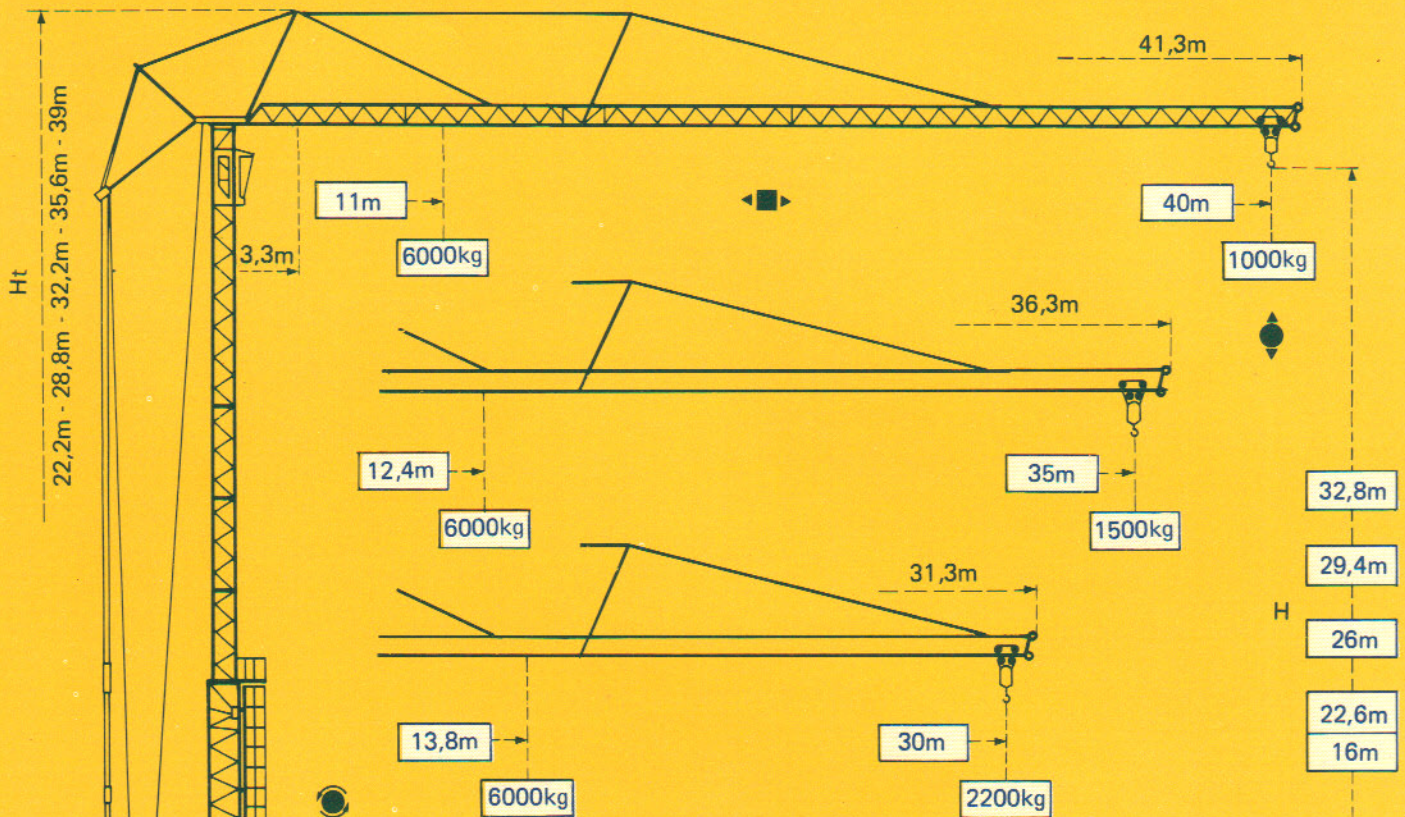
**GTMR 340B**

**Potain**



# Potain GTMR 340B

Cotes Abmessungen Dimensions Dimensiones

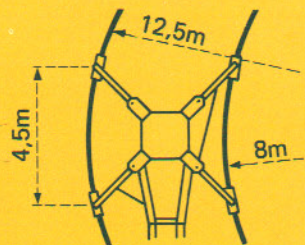
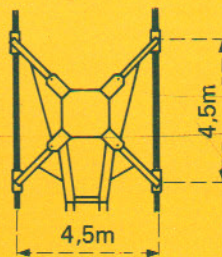
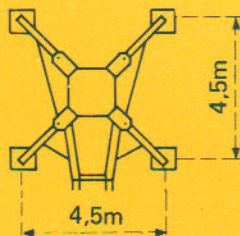


Version sur vérins  
Ausführung auf Abstützspindeln  
Jacks version  
Versión sobre gato

Version voie droite  
Ausführung gerade Schienenbahn  
Straight track version  
Versión vía recta

Version voie courbe  
Ausführung Kurvengeleis  
Curved track version  
Versión vía curva

F1



F1 = Réactions Eckdrücke Reactions Reacciones

F1	● 302 kN	■ 258 kN
	26,6 t	

- En service
- Hors service

A vide sans lest ni train de transport, avec flèche et hauteur maximum.

- In Betrieb
- Ausser Betrieb

Ohne Last, Ballast und Transportachse, mit Maximalausleger und Maximalhöhe.


- In service
- Out of service

Without load, ballast or transport axles, with maximum jib and maximum height.

- En servicio
- Fuera de servicio

Sin carga, sin lastre, ni tren de transporte, flecha y altura maximas.

# Courbes de charges Lastkurven Load curves Curvas de cargas


 Flèche Ausleger Jib Flecha

3,3 →	11	12	14	16	18	20	22	24	26	28	30	32	34	36	38	40	m
⊗	6000	5390	4390	3680	3150	2730	2400	2130	1910	1720	1560	1410	1290	1180	1090	1000	kg

 40m

3,3 →	20,1	22	24	26	28	30	32	34	36	38	40	m
⊗	3000	2680	2410	2180	1980	1820	1670	1550	1440	1340	1250	kg

3,3 →	12,4	14	16	18	20	22	24	26	28	30	32	34	35	m
⊗	6000	5120	4310	3690	3220	2840	2530	2270	2050	1870	1710	1560	1500	kg

 35m

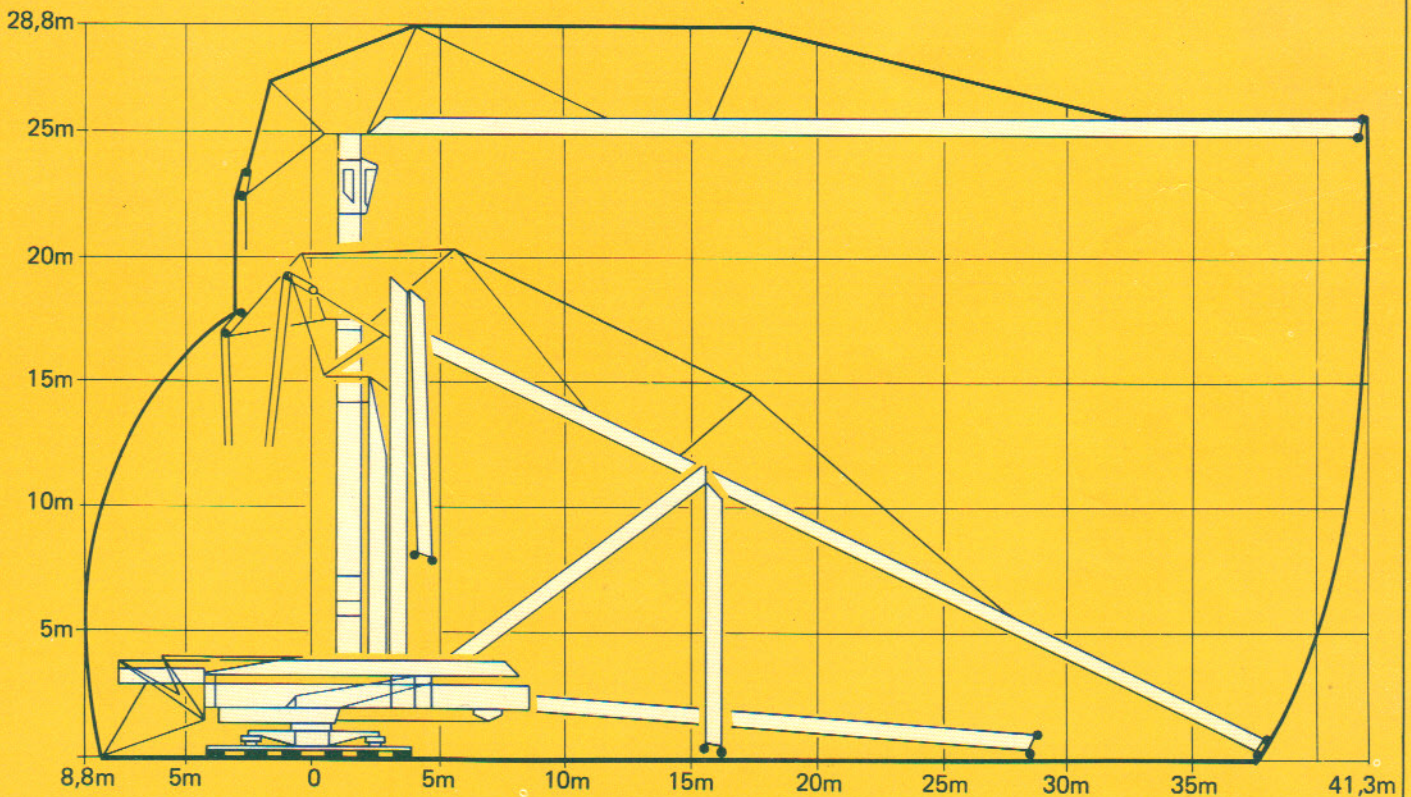
3,3 →	22,7	24	26	28	30	32	34	35	m
⊗	3000	2800	2530	2310	2120	1960	1820	1750	kg

3,3 →	13,8	14	16	18	20	22	24	26	28	30	m
⊗	6000	5900	4970	4280	3740	3310	2950	2660	2410	2200	kg














 30m

3,3 →	25,4	28	30	m
⊗	3000	2670	2450	kg

## Montage Montage Erection Montaje

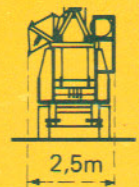
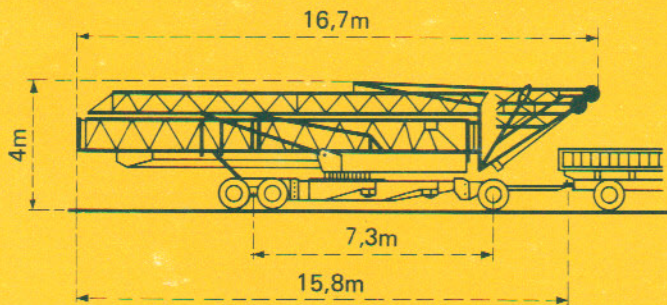


Mécanismes    Antriebe    Mechanisms    Mecanismos

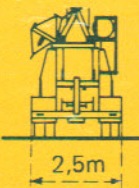
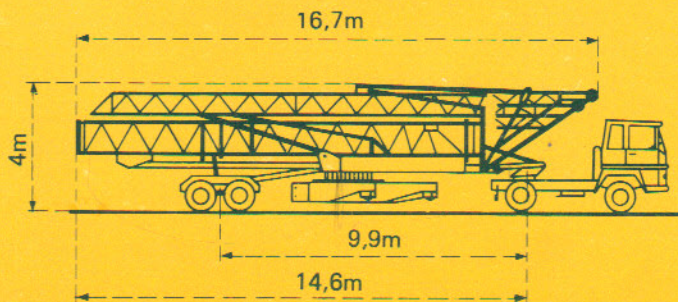
				m/min	kg	ch-PS hp	kW
Levage Heben Hoisting Elevación	 PC25T			5,5	3000	4,5	3,3
				30	3000	25	18
				60	1500		
				2,7	6000	4,5	3,3
				15	6000	25	18
				30	3000		
Distribution - <i>Katzfahren</i> Trolleying - <i>Distribución</i>		RCC 52	15 30 45		6,5	4,8	
Orientation - <i>Schwenken</i> Slewing - <i>Orientación</i>		OMD 31	0,1-0,5-1 tr/min U/min-rpm		8	6	
Translation - <i>Kranfahren</i> Travelling - <i>Traslación</i>		TVD 323	30		2 x 3	2 x 2,2	
		TB 242		2 x 3 2 x 2 2 x 1,5			
Puissance électrique nécessaire Anschlusswert Necessary electric power Potencia electrica necesaria	 380 V 50 HZ	Réseau - <i>Netzstrom</i> - Mains supply - <i>Red</i>			40 kVA		
		Groupe électrogène - <i>Stromaggregat</i> Generator set - <i>Grupo electrogeno</i>			Nous consulter Auf Anfrage Consult us Consultarnos		

Transport    Transport    Transport    Transporte

Version tractée derrière  
 camion  
*Ausführung als LKW-Anhänger*  
 Lorry towed version  
*Versión remolcable detrás*  
*de un camión*



Version semi-portée  
*Ausführung als Sattelaufleger*  
 Tractor towed version  
*Versión en semi-remolque*



DIN 15018 H1 B3



18, rue de Charbonnières B.P 173 - F 69130 ECULLY  
 Tél. (7) 833.81.81    Télex 330 179  
 EXPORT. 89 Av. du Pdt Roosevelt - CHEVILLY - LARUE  
 F 94150 RUNGIS - Tél. (1) 687.22.23 - Télex 270001  
 POTAIN GmbH - D 6082 MÖRFELDEN - WALLDORF  
 Nordendstr. 79-87 - Postfach 420 - Tel. (6 105) 5091 - Telex 4 185745  
 POTAIN SUISSE S.A. - CH 5115 MÖRIKEN WILDEGG  
 Tel. 64.53.19.91 - Telex 68294

Modifications réservées / Änderungen vorbehalten / Subject to modification / Modificaciones reservadas  
 Ref. 8036 EYH 1  
 Printed in France