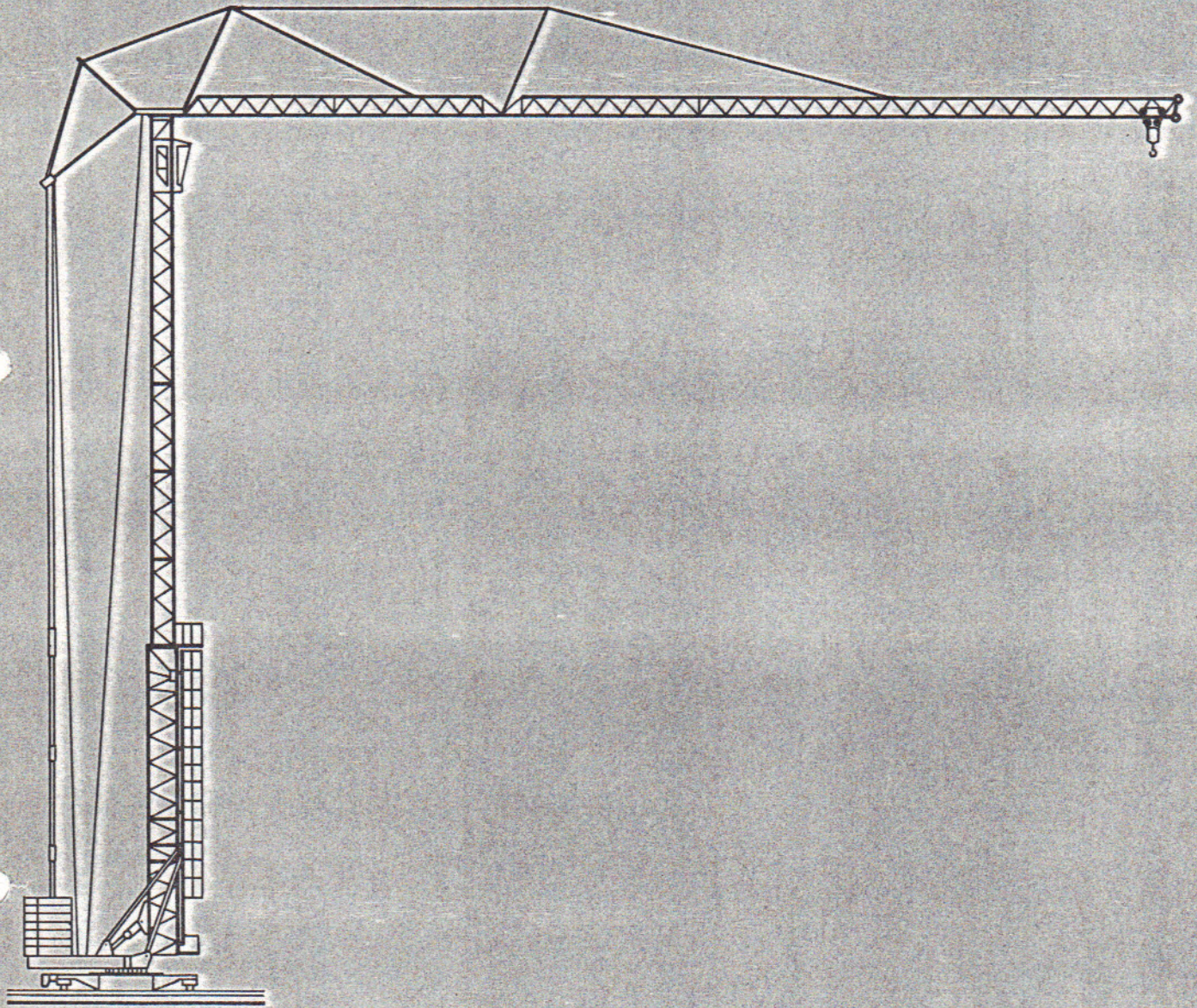


GTMR 350A



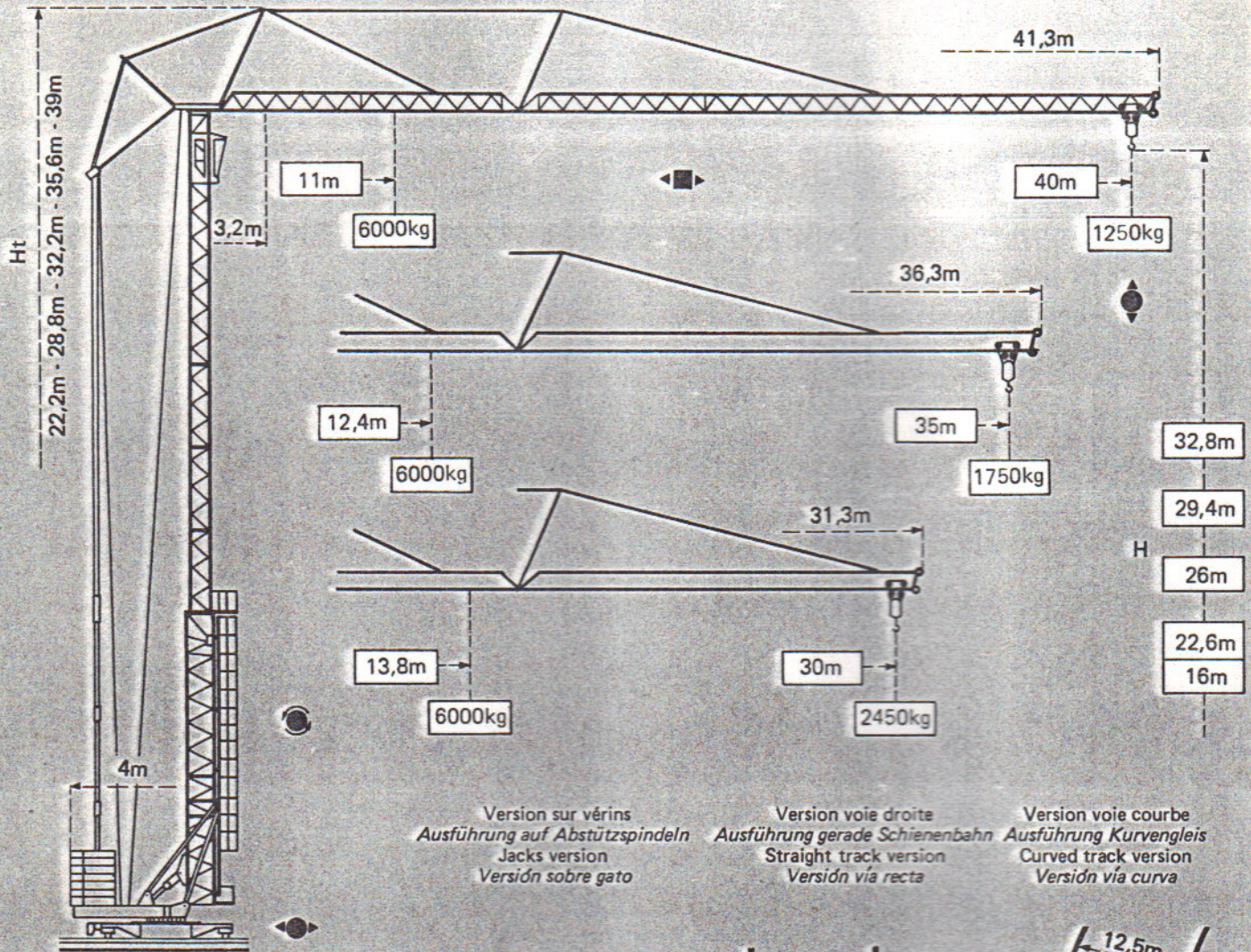
GTMR 350A

Potain



Potain GTMR 350A

Cotes Abmessungen Dimensions Dimensiones

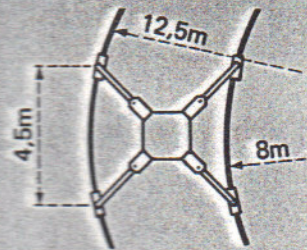
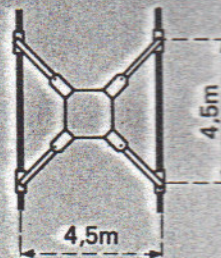
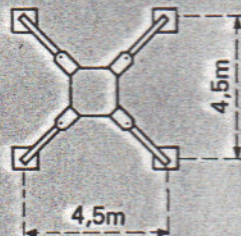


Version sur vérins
Ausführung auf Abstützspindeln
Jacks version
Versión sobre gato

Version voie droite
Ausführung gerade Schienenbahn
Straight track version
Versión vía recta

Version voie courbe
Ausführung Kurvengleis
Curved track version
Versión vía curva

F1



F1 = Réactions Eckdrücke Reactions · Reacciones

F1	● 296 kN	■ 253 kN
	24,3 t	

- En service
- Hors service

A vide sans lest ni train de transport, avec flèche et hauteur maximum.

- In Betrieb
- Ausser Betrieb

Ohne Last, Ballast und Transportachse, mit Maximalausleger und Maximalhöhe.


- In service
- Out of service

Without load, ballast or transport axles, with maximum jib and maximum height.

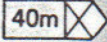
- En servicio
- Fuera de servicio

Sin carga, sin lastre, ni tren de transporte, flecha y altura máximas.

Courbes de charges Lastkurven Load curves Curvas de cargas

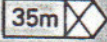
 Flèche Ausleger Jib Flecha

3,3 →	11	12	14	16	18	20	22	24	26	28	30	32	34	36	38	40	m
☞/☞	6000	5390	4390	3680	3150	2730	2400	2130	1910	1720	1560	1410	1290	1180	1090	1000	kg

 40m

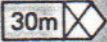
3,3 →	20,1	22	24	26	28	30	32	34	36	38	40	m	
☞		3000	2680	2410	2180	1980	1820	1670	1550	1440	1340	1250	kg

3,3 →	12,4	14	16	18	20	22	24	26	28	30	32	34	35	m
☞/☞	6000	5120	4310	3690	3220	2840	2530	2270	2050	1870	1710	1560	1500	kg

 35m

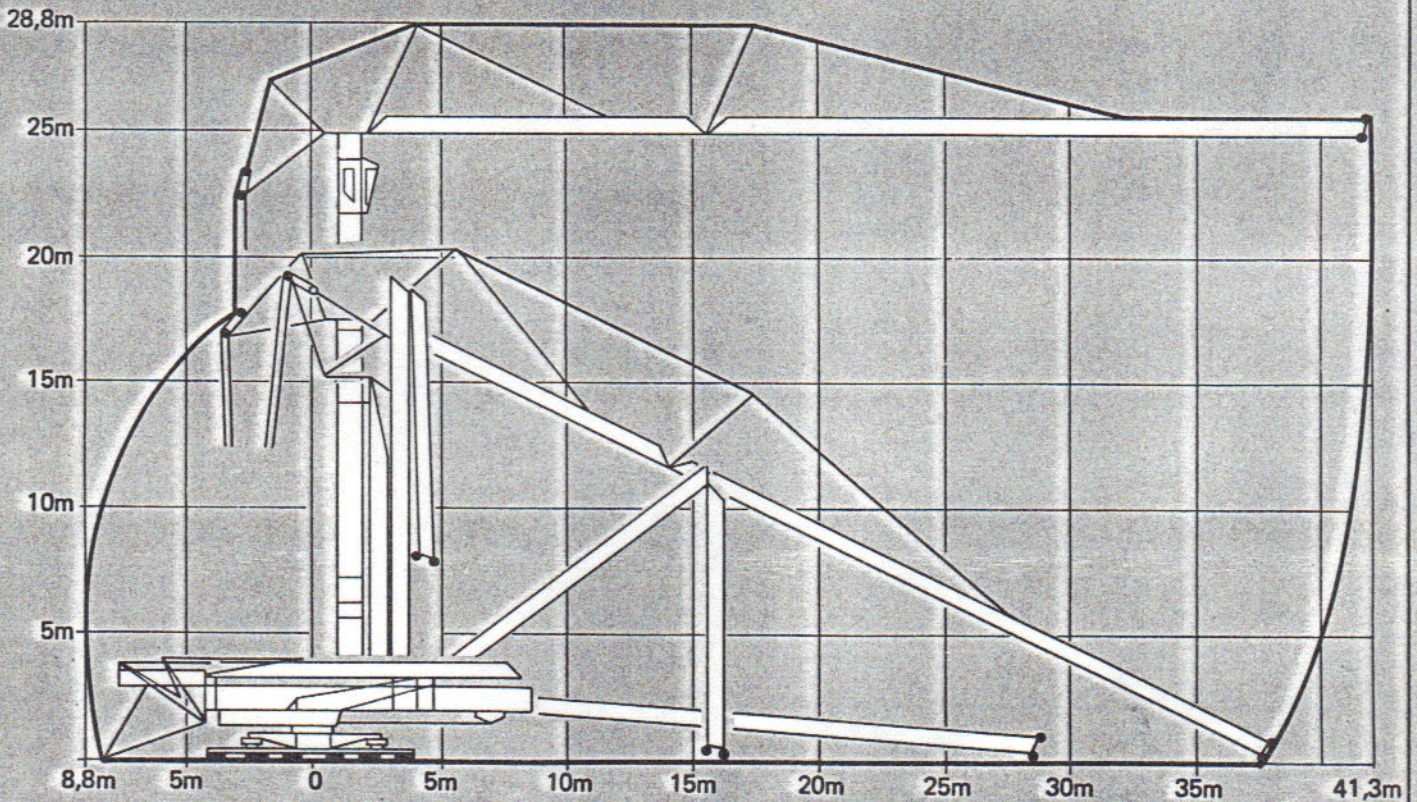
3,3 →	22,7	24	26	28	30	32	34	35	m	
☞		3000	2800	2530	2310	2120	1960	1820	1750	kg

3,3 →	13,8	14	16	18	20	22	24	26	28	30	m
☞/☞	6000	5900	4970	4280	3740	3310	2950	2660	2410	2200	kg

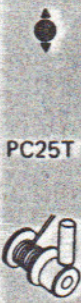












 30m

3,3 →	25,4	28	30	m	
☞		3000	2670	2450	kg

Montage Montage Erection Montaje

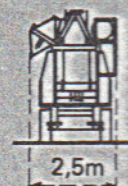
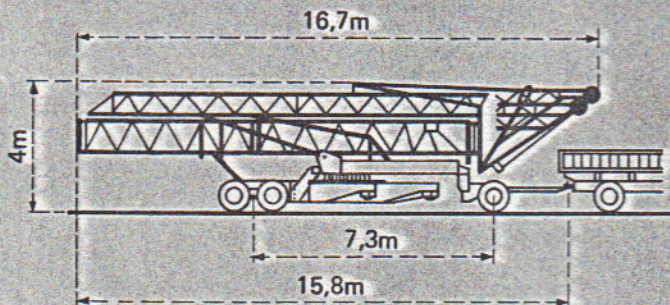


Mécanismes Antriebe Mechanisms Mecanismos

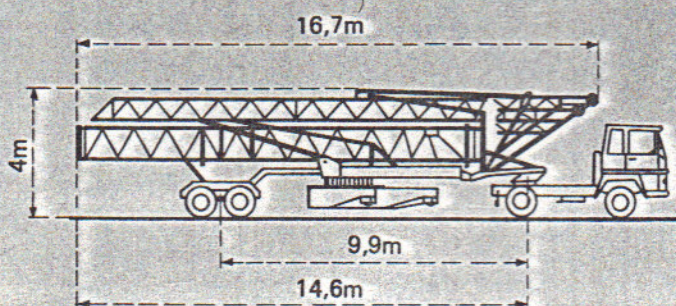
				m/min	kg	ch-PS hp	kW
Levage Heben Hoisting Elevación				5,5	3000	4,5	3,3
				30	3000		
				60	1500		
				2,7	6000	4,5	3,3
				15	6000		
				30	3000	25	18
Distribution - Katzfahren Trolleying - Distribución		RCC 52	15 30 45		6,5	4,8	
Orientation - Schwenken Slewing - Orientación		RCO 51	0,1-0,5-1 tr/min U/min-rpm		6,5	4,8	
Translation - Kranfahren Travelling - Traslación		TVD 323	30		2 x 3	2 x 2,2	
		RT 123 C1		2 x 3	2 x 2,2		
Puissance électrique nécessaire Anschlusswert Necessary electric power Potencia electrica necesaria		Réseau - Netzstrom - Mains supply - Red				40 kVA	
		Groupe électrogène - Stromaggregat Generator set - Grupo electrogeno				Nous consulter Auf Anfrage Consult us Consultarnos	

Transport Transport Transport Transporte

Version tractée derrière camion
 Ausführung als LKW-Anhänger
 Lorry towed version
 Versión remolcable detrás de un camión



Version semi-portée
 Ausführung als Sattelaufleger
 Tractor towed version
 Versión en semi-remolque



DIN 15018 H1 B3

 **Potain**

18, rue de Charbonnières B.P 173 - F 69130 ECULLY
 Tél. (7) 833.81.81 - Télex 330 179
 EXPORT. 89 Av. du Pdt Roosevelt - CHEVILLY - LARUE
 F 94150 RUNGIS - Tél. (1) 687.22.23 - Télex 270001
 POTAIN GmbH - D 6082 MÖRFELDEN - WALLDORF
 Nordendstr. 79-87 - Postfach 420 - Tel. (6 105) 5091 - Telex 4 185745
 POTAIN SUISSE S.A. - CH 5115 MÖRIKEN WILDEGG
 Tel. 64.53.19.91 - Telex 68294

Modifications réservées - Änderungen vorbehalten - Subject to modification - Modificaciones reservadas
 Ref. 8036 EYH 2
 Printed in France