

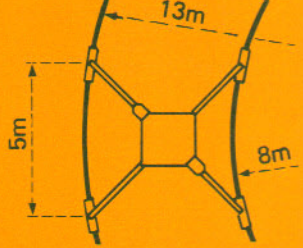
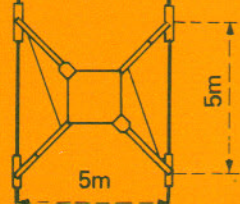
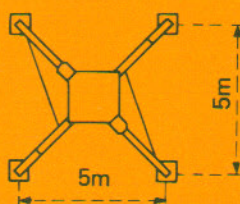
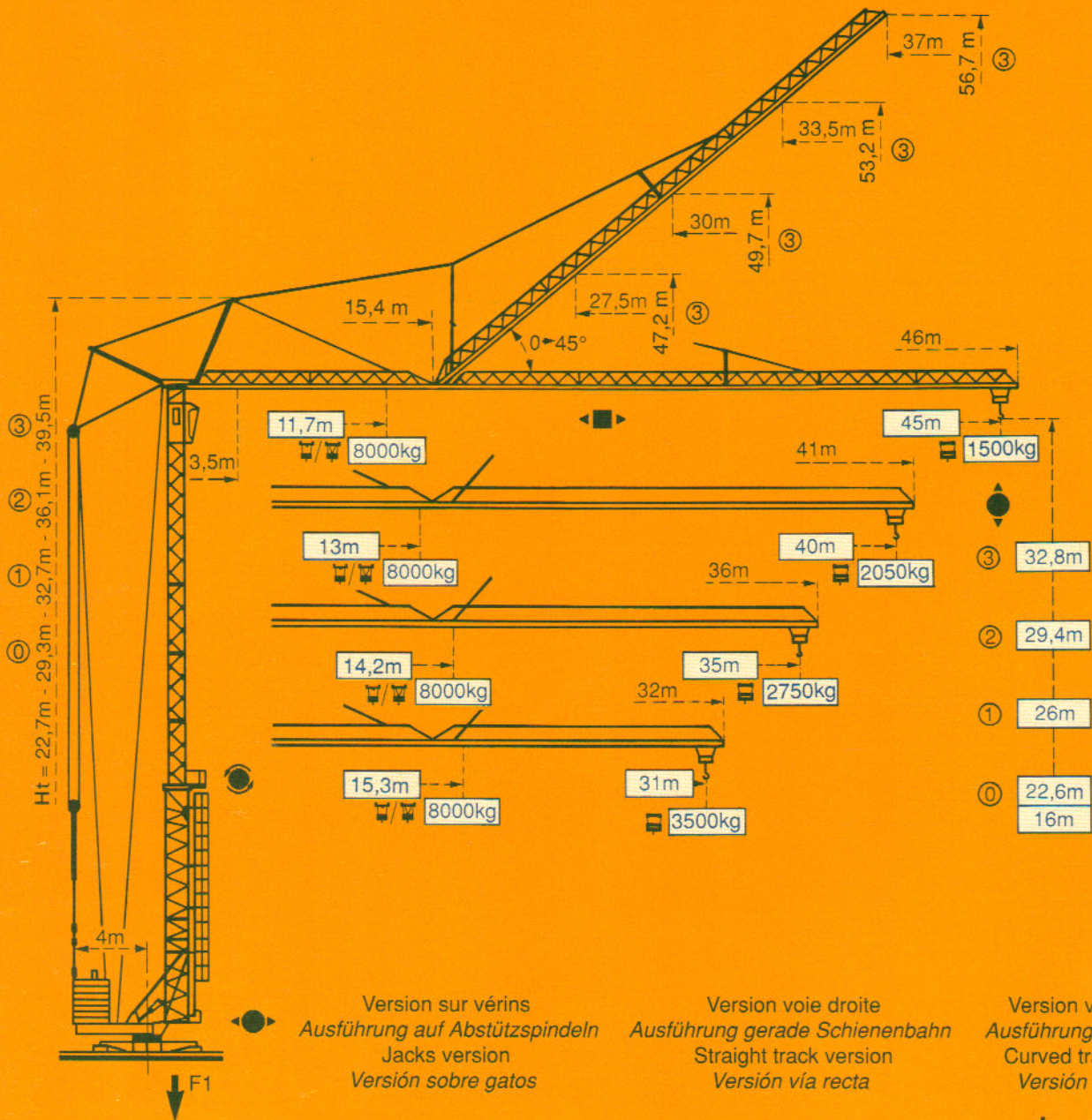
---

**GTMR 366 A**

---

**POTAIN** 





F1 = Réactions Eckdrücke Reactions Reacciones

F1	● 45t	■ 37t
	30t	

● En service  
■ Hors service

● In Betrieb  
■ Ausser Betrieb

● In service  
■ Out of service

● En servicio  
■ Fuera de servicio

A vide sans lest ni train de transport, avec flèche et hauteur maximum.

Ohne Last, Ballast und Transportachse, mit Maximalausleger und Maximalhöhe.

Without load, ballast or transport axles, with maximum jib and maximum height.

Sin cargas, sin lastre, ni tren de transporte, flecha y altura máximas.



**Courbes de charges**

**Lastkurven**

**Load diagrams**

**Curvas de cargas**



Flèche Ausleger Jib Flecha



**Flèche relevée**

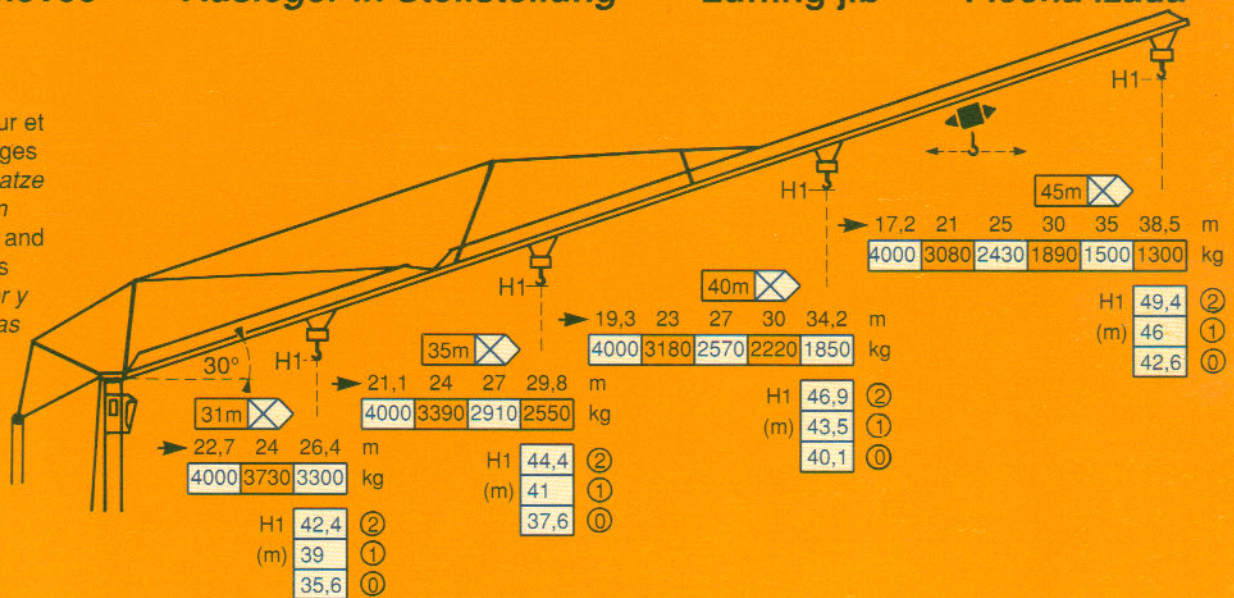
**Ausleger in Steilstellung**

**Luffing jib**

**Flecha izada**



5 D3 V4  
 Chariot distributeur et Courbes de charges  
 Verfahrbare Laufkatze und Lastkurven  
 Traversing trolley and Load diagrams  
 Carro distribuidor y Curvas de cargas

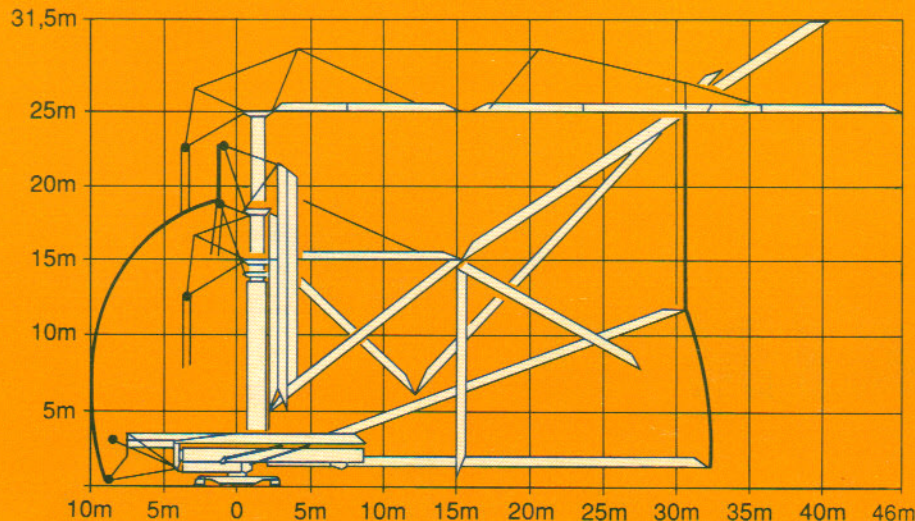


**Montage**

**Montage**

**Erection**

**Montaje**












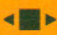







**Mécanisme**

**Antriebe**

**Mechanisms**

**Mecanismos**

				m/min	kg	ch-PS hp	kW
Levage Heben Hoisting Elevación	33 PC 20 			5,4	4000	5,5	4
				30	4000		
				60	2000		
				2,7	8000	5,5	4
				15	8000		
				30	4000		
Distribution - <i>Katzfahren</i> Trolleying - <i>Distribución</i>		5 D3 V4	15-30-58		5,5	4	
Orientation - <i>Schwenken</i> Slewing - <i>Orientación</i>		RCV 62	0 → 0,8 tr/min U/min-rpm		8	5,9	
Translation - <i>Kranfahren</i> Travelling - <i>Traslación</i>		Standard	25		2 x 4	2 x 3	
Réseau - <i>Netzstrom</i> - Mains supply - <i>Red</i>						380V - 50HZ	
Puissance électrique nécessaire - <i>Anschlusswert</i> - Necessary electric power - <i>Potencia electrica necesaria</i>						50 KVA	
Groupe électrogène - <i>Stromaggregat</i> - Generator set - <i>Grupo electrogeno</i>						*	

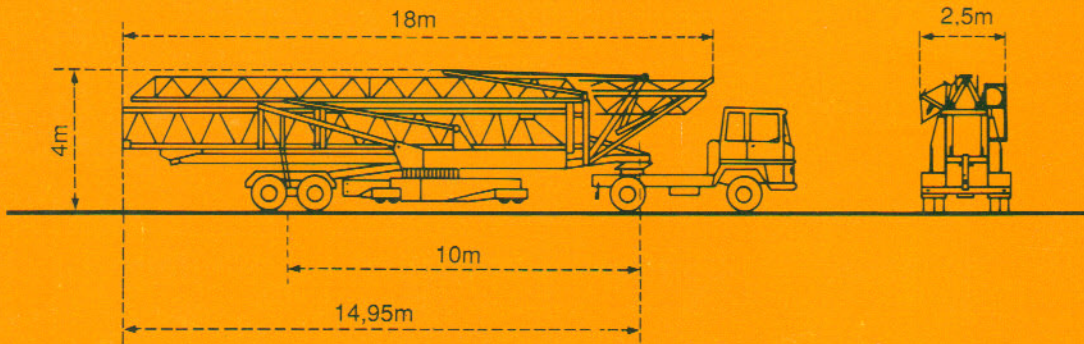
\* Nous consulter - *Auf Anfrage* - Consult us - *Consultanos*

**Transport**

**Transport**

**Transport**

**Transporte**



Version semi-portée  
*Ausführung als Sattelaufleger*  
 Tractor towed version  
*Versión en semi-remolque*

Conforme à la directive CEE 84/534 sur le niveau acoustique - *Gemäss EWG-Richtlinie 84/534 über Schall-Leistungspegel*  
 In compliance with the EEC 84/534 Instruction on noise level - *Conforme con la directiva CEE 84/534 sobre el nivel acústico*

DIN 15018 H1 B3

NF E52081 - 82

**POTAIN** 

18, rue de Charbonnières, B.P. 173-F 69132 ECULLY Cedex  
 Tél. 72.20.20.20 - Télex 330 179 - Télex. Export 375 213 -  
 Fax 72 20 20 00

POTAIN GmbH 6082 MÖRFELDEN WALLDORF  
 Nordendstr. 79-87 - Postfach 420  
 Tél. 06 105 704.0 - Télex 4.1857 45

**GTMR 366A**

Réf. 1989.06 KXV 5

Modifications réservées - Änderungen vorbehalten - Subject to modification - Modificaciones reservadas  
 Printed in France