

---

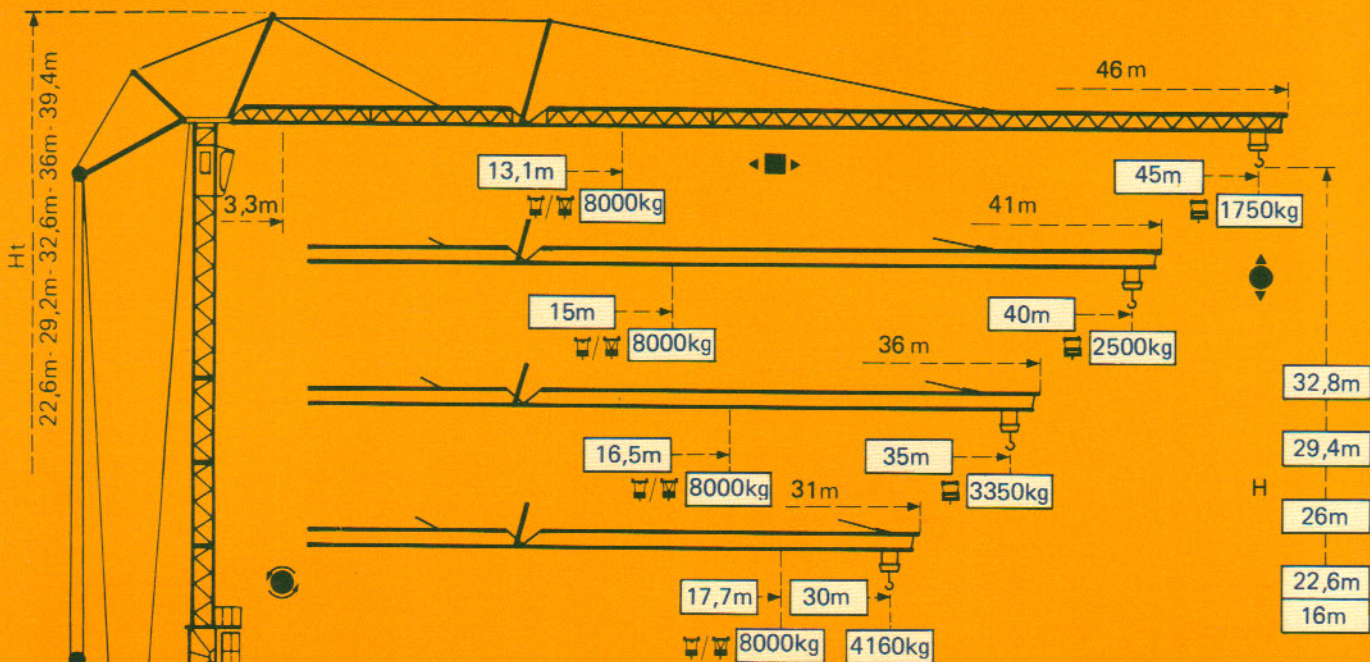
**GTMR 380C**

---

**POTAIN** 

# POTAIN GTMR 380C

Cotes *Abmessungen* *Dimensions* *Dimensiones*

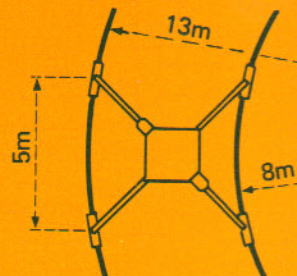
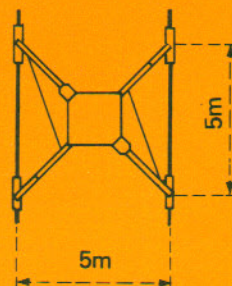
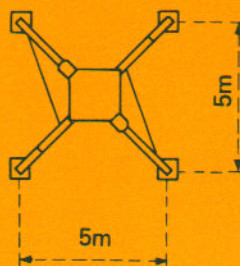


Version sur vérins  
Ausführung auf Abstützspindeln  
Jacks version  
Versión sobre gatos


Version voie droite  
Ausführung gerade Schienenbahn  
Straight track version  
Versión vía recta

Version voie courbe  
Ausführung Kurvengleis  
Curved track version  
Versión vía curva


F1




F1 = Réactions *Eckdrücke* Reactions *Reacciones*

F1	● 38,4 t	■ 30 t
	29,2 t	


- En service
- Hors service

 A vide sans lest ni train de transport, avec flèche et hauteur maximum.


- In Betrieb
- Ausser Betrieb

 Ohne Last, Ballast und Transportachse, mit Maximalausleger und Maximalhöhe.

- In service
- Out of service

 Without load, ballast or transport axles, with maximum jib and maximum height.

- En servicio
- Fuera de servicio

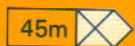
 Sin carga, sin lastre, ni tren de transporte, flecha y altura máximas.

# Courbes de charges Lastkurven Load curves Curvas de cargas



Flèche Ausleger Jib Flecha

3,3 →	13,1	15	17	19	21	23	25	27	29	31	33	35	37	39	41	43	45	m
kg / 1000	8000	6690	5690	4930	4330	3850	3450	3110	2830	2580	2370	2180	2010	1860	1730	1610	1500	kg



45m

3,3 →	23,1	25	27	29	31	33	35	37	39	41	43	45	m
kg / 1000	4000	3630	3310	3030	2790	2590	2400	2240	2100	1970	1860	1750	kg

3,3 →	15	17	19	21	23	25	27	29	31	33	35	37	39	40	m
kg / 1000	8000	6850	5950	5250	4670	4200	3810	3470	3180	2920	2700	2510	2330	2250	kg



40m

3,3 →	27,1	29	31	33	35	37	39	40	m
kg / 1000	4000	3690	3400	3160	2940	2750	2580	2500	kg

3,3 →	16,5	17	19	21	23	25	27	29	31	33	35	m
kg / 1000	8000	7730	6730	5940	5300	4770	4330	3960	3630	3350	3100	kg



35m

3,3 →	30,1	31	33	35	m
kg / 1000	4000	3870	3590	3350	kg

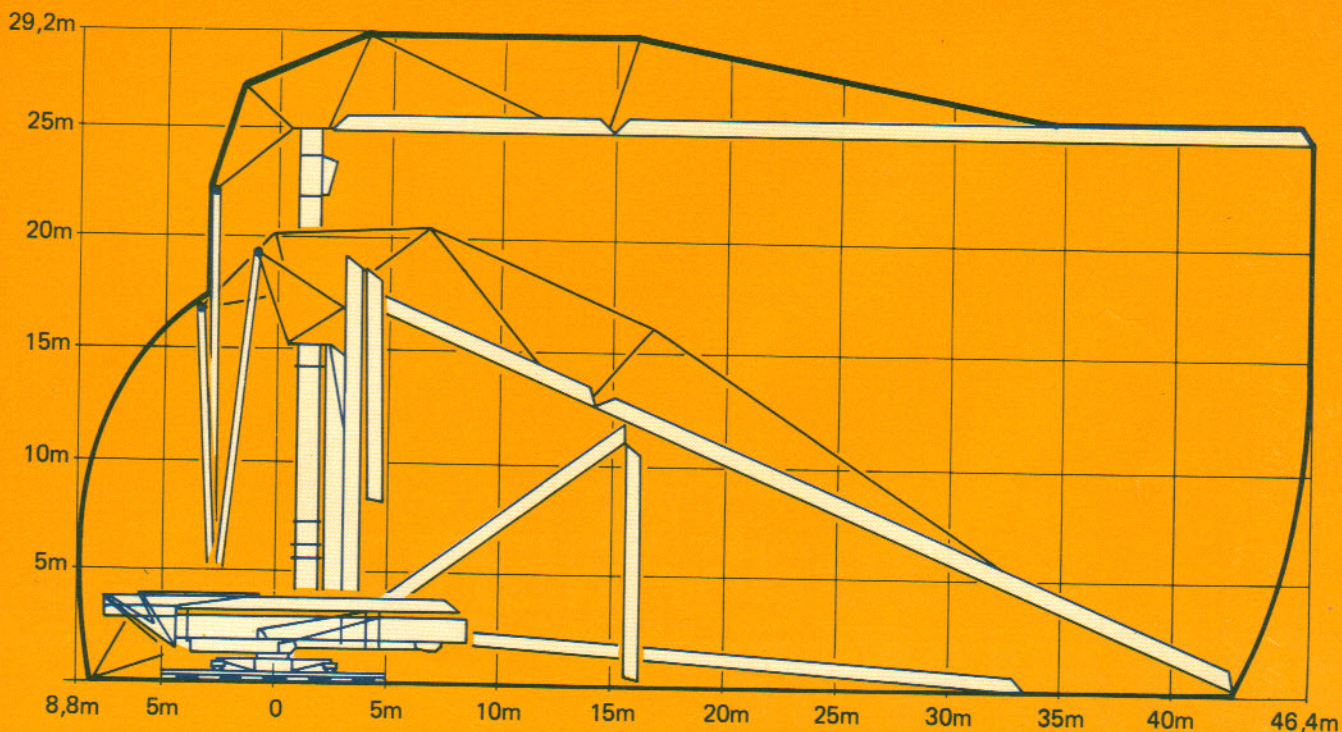
3,3 →	17,7	19	21	23	25	27	29	30	m
kg / 1000	8000	7350	6490	5800	5230	4750	4340	4160	kg


















30m

3,3 →	30	m
kg / 1000	4000	kg

## Montage Montage Erection Montaje

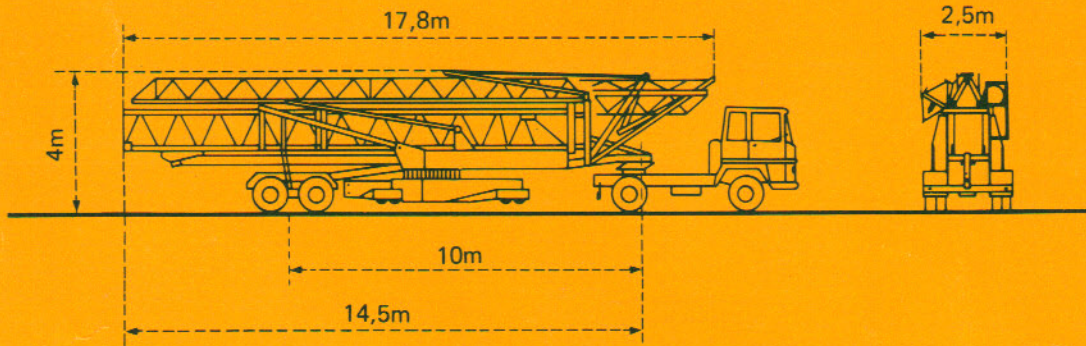


Mécanismes Antriebe Mechanisms Mecanismos

				m/min.	kg	ch-PS hp	kW
Levage Heben Hoisting Elevación	 33 PC 20			5,4	4000	5,5	4
				30	4000	33	24
				60	2000		
				2,7	8000	5,5	4
				15	8000	33	24
				30	4000		
Distribution - <i>Katzfahren</i> Trolleying - <i>Distribución</i>		5D3V4	15-30-58		5	3,7	
Orientation - <i>Schwenken</i> Slewing - <i>Orientación</i>		OMD 32	0,1-0,4-0,8 tr/mn U/min-rpm		8	6	
Translation - <i>Kranfahren</i> Travelling - <i>Traslación</i>		Standard	25		2 x 4	2 x 3	
Réseau - <i>Netzstrom</i> - Mains supply - <i>Red</i>						380V - 50 HZ	
Puissance électrique nécessaire - <i>Anschlusswert</i> - Necessary electric power - <i>Potencia electrica necesaria</i>						50 KVA	
Groupe électrogène - <i>Stromaggregat</i> - Generator set - <i>Grupo electrogeno</i>						•	

\*Nous consulter - *Auf Anfrage* - Consult us - *Consultarnos*

Transport Transport Transporte



Version semi-portée  
*Ausführung als Sattelaufleger*  
 Tractor towed version  
*Versión en semi-remolque*

DIN 15018 H1 B3

NF E52081 - 82

**POTAIN** 

18, rue de Charbonnières, B.P. 173-F 69132 ECULLY Cedex  
 Tél. 72.20.20.20 - Télex 330 179 - Télex. Export 375 213 -  
 Fax 72 20 20 00

POTAIN GmbH 6082 MÖRFELDEN WALLDORF  
 Nordendstr. 79-87 - Postfach 420  
 Tél. 06 105 704.0 - Télex 4.1857 45

**GTMR 380C**

Ref. 1988.22.KVR1

Modifications réservées - *Änderungen vorbehalten* - Subject to modification - *Modificaciones reservadas*  
 Printed in France