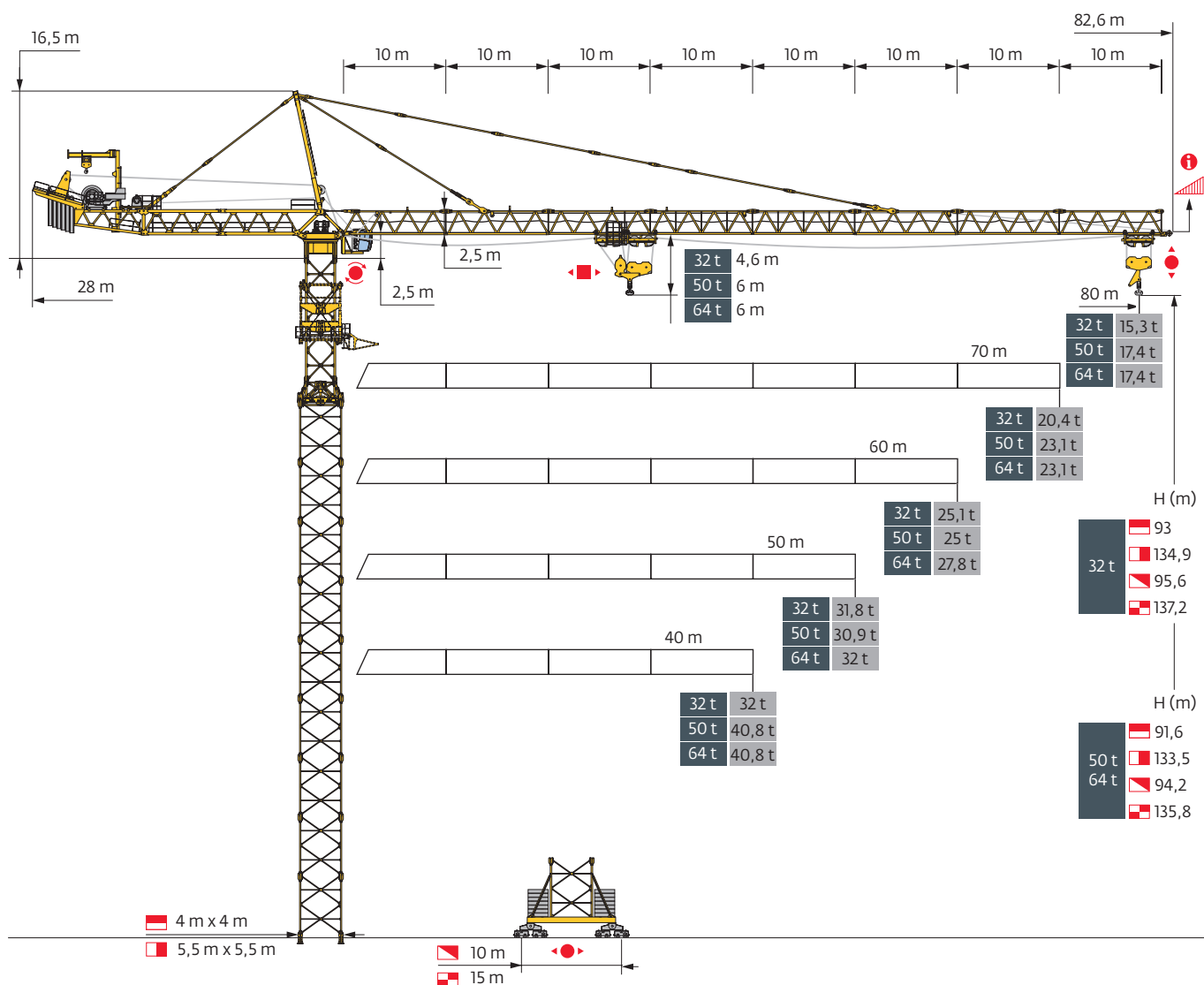
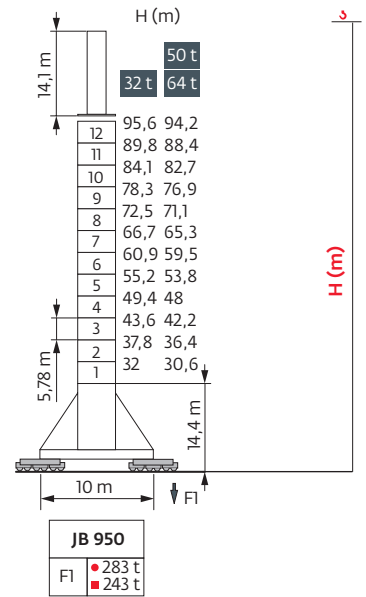
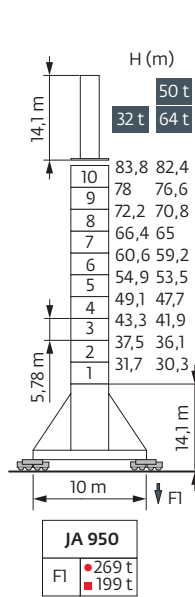
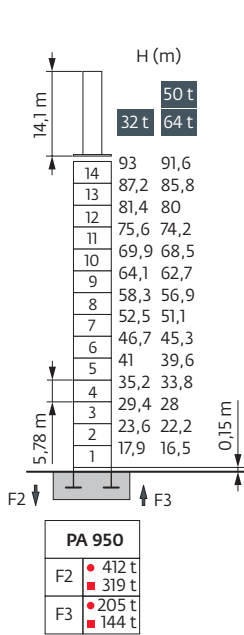


Potain MD 1600

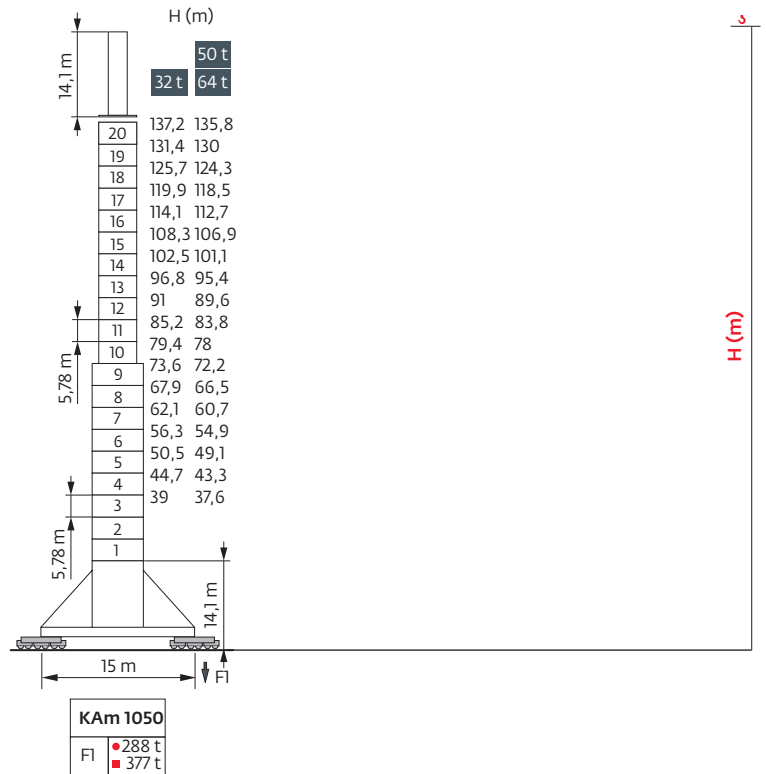
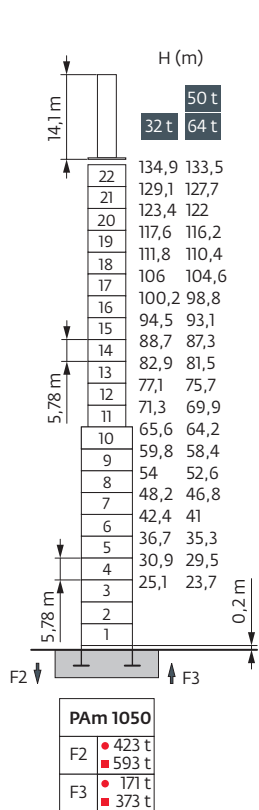


Mât - Réactions / Mast - Reaktionskräfte / Mast - Reactions / Mástil - Reacciones / Torre - Reazioni
 Tramo - Reações / Реакция опор мачты

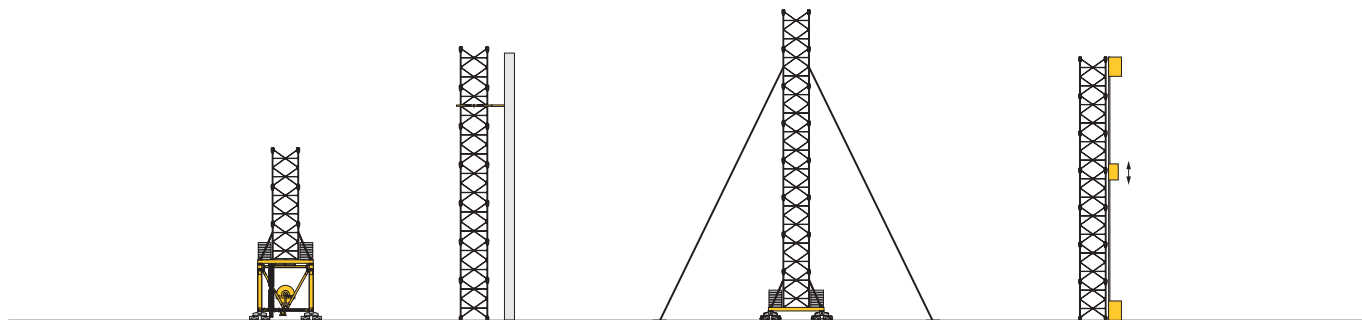
4 m
 40 m → 80 m



5,5 m / 4 m
 40 m → 80 m



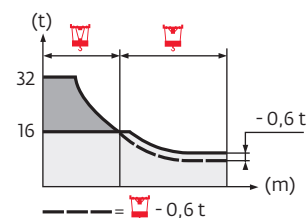
Autres implantations / Aufstellmöglichkeiten / Mounting possibilities / Otras implantaciones / Altre postazioni
 Outras implantações / Возможности установки ⓘ



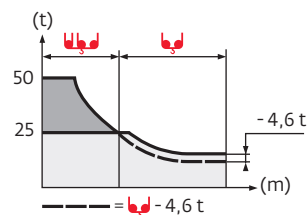
Courbes de charges / Lastkurven / Load curves / Curvas de carga / Curve di carico
 Curvas de carga / Кривые нагрузок



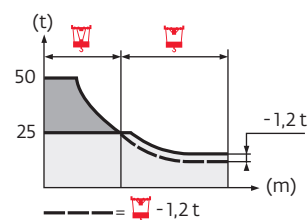
80 m	5,7	▶	45,4	50	55	60	65	70	75	75,7	77,7	80	m
▲▲▲▲			32	28,3	25	22,3	19,9	17,9	16,2	16	16	15,3	t
40 m/50 m/60 m/70 m	5,7	▶	49,7	50	55	60	65	70					m
▲▲▲▲			32	31,8	28,1	25,1	22,6	20,4					t



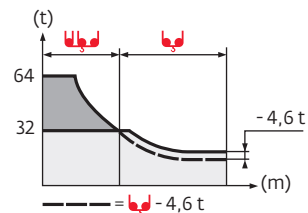
80 m	5,7	▶	30,3	35	40	45	50	52	59,9	65	70	75	80	m
▲▲▲▲			50	42	35,5	30,5	26,4	25	25	22,6	20,6	18,9	17,4	t
40 m/50 m/60 m/70 m	5,7	▶	33,2	35	40	45	50	55	57	60	65,6	70	m	
▲▲▲▲			50	46,9	39,8	34,3	29,9	26,3	25	25	25	23,1	t	



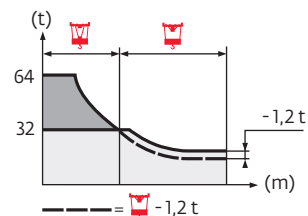
80 m	5,7	▶	30,8	35	40	45	50	53,6	55,6	60	65	70	75	80	m
▲▲▲▲			50	43	36,5	31,5	27,4	25	25	22,6	20,3	18,3	16,5	15	t
40 m/50 m/60 m/70 m	5,7	▶	33,8	35	40	45	50	55	58,7	60	60,8	65	70	m	
▲▲▲▲			50	47,9	40,8	35,3	30,9	27,3	25	25	22,9	20,7	t		



80 m	5,7	▶	24,6	25	30	35	40	43,3	48,7	50	55	60	65	70	75	80	m
▲▲▲▲			64	62,7	50,6	42	35,5	32	32	31	27,7	25	22,6	20,6	18,9	17,4	t
40 m/50 m/60 m/70 m	5,7	▶	26,9	30	35	40	45	47,5	50	53,3	55	60	65	70	m		
▲▲▲▲			64	56,3	46,9	39,8	34,3	32	32	32	30,8	27,8	25,3	23,1	t		



80 m	5,7	▶	24,9	25	30	35	40	44,4	45,7	50	55	60	65	70	75	80	m
▲▲▲▲			64	63,7	51,6	43	36,5	32	32	28,6	25,3	22,6	20,3	18,3	16,5	15	t
40 m/50 m/60 m/70 m	5,7	▶	27,3	30	35	40	45	48,6	50	55	60	65	70	m			
▲▲▲▲			64	57,4	47,9	40,8	35,3	32	32	28,5	25,5	22,9	20,7	t			



Mécanismes / Triebwerke / Mechanisms / Mecanismos / Meccanismi
 Mecanismos / Механизмы

400 V - 50 Hz 480 V - 60 Hz														ch - PS hp	kW	
	250 LCC 80	32 t	m/min	46	68	86	108	122	23	34	43	54	61	250	180	620 m
			t	16	12	8	4	2	32	24	16	6	4			
	250 LCC 125	50 t	m/min	30	44	56	72	80	15	22	28	36	40			
		t	25	18,8	12,5	6,2	3,1	50	37,5	25	12,5	6,25	250	180	690 m	
	250 LCC 160	64 t	m/min	24	34	44	56	62	12	17	22	28	31	250	180	440 m
		t	32	24	16	8	4	64	48	32	16	8				
	15 DVF 16	32 t	m/min	0 → 33 (32 t) 0 → 50 (16 t) 0 → 67 (8 t) 0 → 100 (2 t)									15	11		
	25 DVF 25	50 t	m/min	0 → 33 (50 t) 0 → 66 (25 t) 0 → 80 (12,5 t)									25	18		
	25 DVF 33	64 t	m/min	0 → 25 (64 t) 0 → 50 (32 t)									25	18		
	RVF 194 Optima+	tr/min U/min rpm		0 → 0,6									4 x 15	4 x 11		

	IEC 60204-32		kVA
	400 V (+10% -10%) 50 Hz		250 LCC / 15 DVF : 344 kVA 250 LCC / 25 DVF : 354 kVA
	480 V (+6% -10%) 60 Hz		250 LCC / 15 DVF : 401 kVA 250 LCC / 25 DVF : 411 kVA

	FR	DE	EN	ES	IT	PT	RU
	Appel de flèche	Auslegerüberhöhung	Jib elevation	Elevación de la flecha	Inclinazione braccio	Desvio da lança	подъем стрелы
	Réactions en service	Reaktionskräfte in Betrieb	Reactions in service	Reacciones en servicio	Reazioni in servizio	Reacções em serviço	Реакция при работе
	Réactions hors service	Reaktionskräfte außer Betrieb	Reactions out of service	Reacciones fuera de servicio	Reazioni fuori servizio	Reacções fora de serviço	Реакция в покое
	Levage	Heben	Hoisting	Elevación	Sollevamento	Elevação	Подъем
	Distribution	Katzfahren	Trolleying	Distribución	Distribuzione	Distribuição	Перемещение по стреле
	Orientation	Schwenken	Slewing	Orientación	Rotazione	Rotação	Поворот
	Translation	Kranfahren	Travelling	Traslación	Traslazione	Translação	Перемещение крана
	Puissance nominale	Nennleistung	Rated power	Potencia nominal	Potenza nominale	Potência nominal	Номинальная мощность
	Nous consulter	Auf Anfrage	Consult us	Consultarnos	Consultateci	Consultar-nos	Проконсультируйтесь у нас
	Document commercial non contractuel. Pour toute information technique se référer à la notice correspondante.	Unverbindliches Vertriebsdokument. Für technische Informationen, siehe die entsprechenden Anweisungen.	This commercial document is not legally binding. For any technical information, please refer to the corresponding instructions.	Documento comercial no contractual. Para cualquier información técnica, ver la noticia correspondiente.	Documento commerciale non vincolante, per tutte le informazioni tecniche fare riferimento al catalogo istruzioni.	Documento comercial não contratual. Para qualquer informação técnica complementar consultar as respectivas instruções.	Этот коммерческий документ не является юридически обязательным. Для получения технической информации, см. соответствующие инструкции.



Manitowoc - Americas
Manitowoc, Wisconsin, USA
 Tel: +1 920 684 6621
 Fax: +1 920 683 6277

Shady Grove, Pennsylvania, USA
 Tel: +1 717 597 8121
 Fax: +1 717 597 4062

Manitowoc - Europe, Middle East & Africa
Ecully, France
 Tel: +33 (0)4 72 18 20 20
 Fax: +33 (0)4 72 18 20 00

Manitowoc - Asia & Pacific
Shanghai, China
 Tel: +86 21 6457 0066
 Fax: +86 21 6457 4955