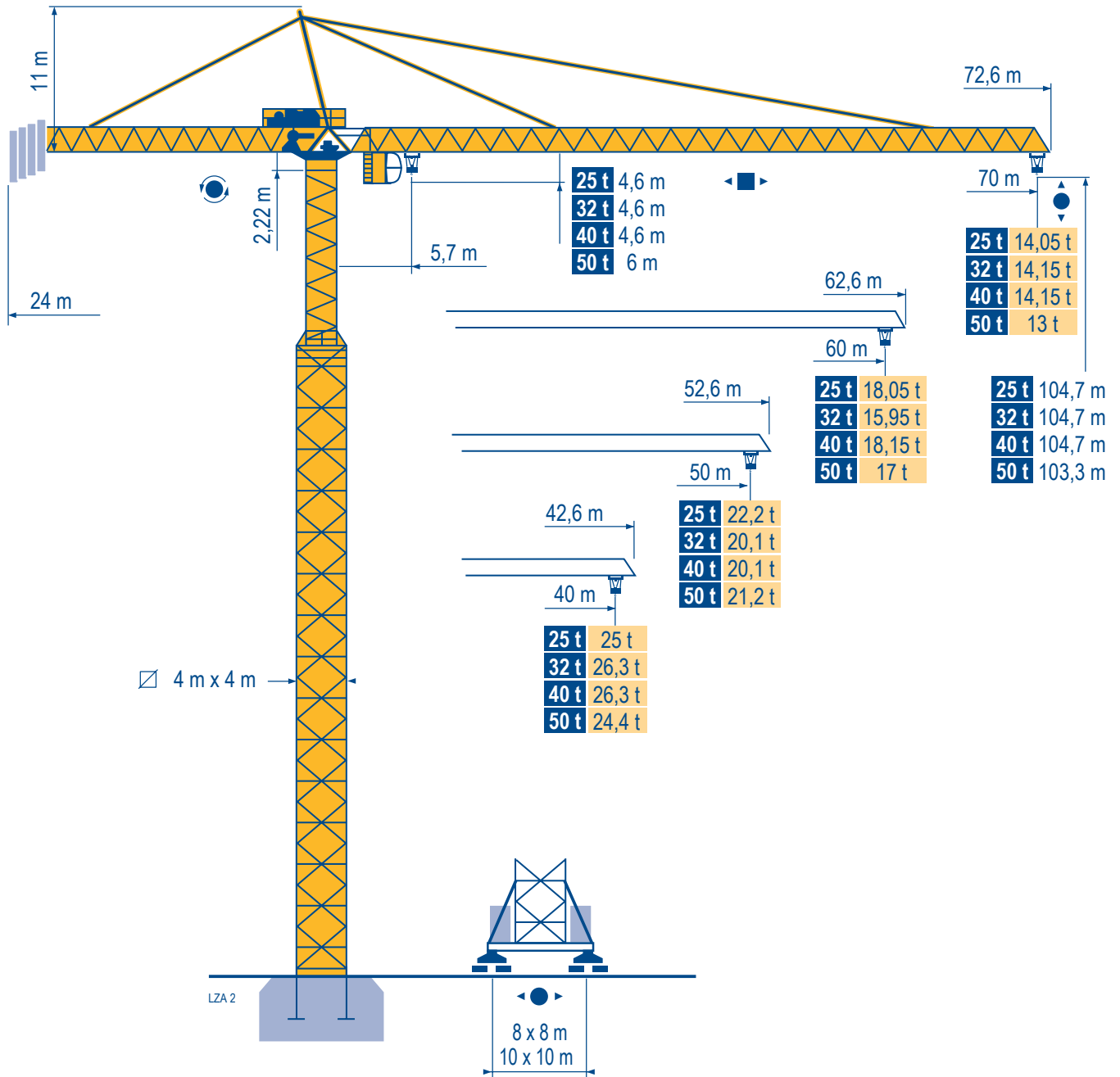


## MD 900 B



Mat / Réactions 4 m x 4 m

Maste /  
Eckdrücke

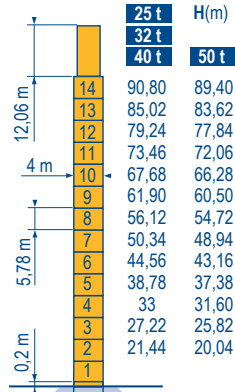
Masts /  
Reactions

Mástil /  
Reacciones

Torre / Reazioni

Tramo /  
Reacções

LZA 2

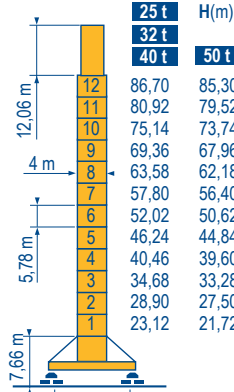


F2 ↓ ↑ F3  
PA 951

F2	25 t	● 247 t	■ 260 t
	32 t	● 251 t	■ 261 t
	40 t	● 251 t	■ 261 t
	50 t	● 287 t	■ 259 t

F3	25 t	● 118 t	■ 139 t
	32 t	● 130 t	■ 139 t
	40 t	● 130 t	■ 139 t
	50 t	● 136 t	■ 131 t

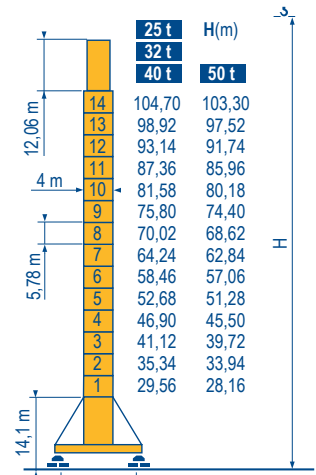
▲	196 t
---	-------



HA 950

F1	25 t	● 195 t	■ 186 t
	32 t	● 191 t	■ 187 t
	40 t	● 191 t	■ 187 t
	50 t	● 221 t	■ 187 t

▲	218 t
---	-------



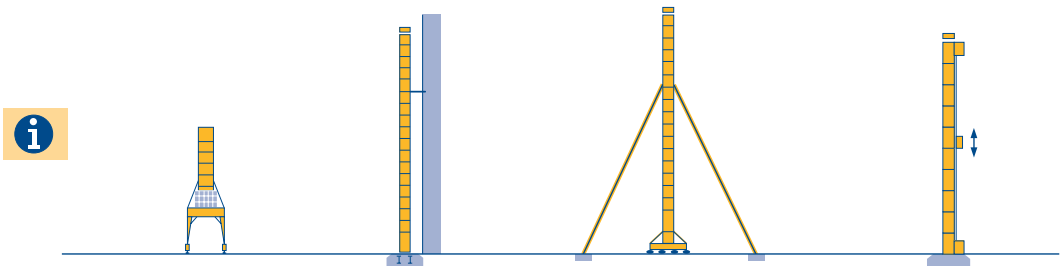
JA 951

F1	25 t	● 197 t	■ 245 t
	32 t	● 195 t	■ 245 t
	40 t	● 195 t	■ 245 t
	50 t	● 218 t	■ 242 t

▲	258 t
---	-------

Autres implantations  
Aufstellmöglichkeiten  
Mounting possibilities  
Otras implantaciones  
Altre postazioni  
Outras implantações

LZA 1



MD 900 B

POTAIN

F

Réactions en service

Réactions hors service

A vide sans lest (ni train de transport) avec flèche et hauteur maximum.

Nous consulter

D

Reaktionskräfte in Betrieb

Reaktionskräfte außer Betrieb

Ohne Last, Ballast (und Transportachse), mit Maximalausleger und Maximalhöhe.

Auf Anfrage

GB

Reactions in service

Reactions out of service

Without load, ballast (or transport axles), with maximum jib and maximum height.

Consult us

E

Reacciones en servicio

Reacciones fuera de servicio

Sin carga, sin lastre, (ni tren de transporte), flecha y altura máxima.

Consultarnos

I

Reazioni in servizio

Reazioni fuori servizio

A vuoto, senza zavorra (ne assali di trasporto) con braccio massimo e altezza massima.

Consultateci

P

Reacções em serviço

Reacções fora de serviço

Sem carga (nem trem de transporte)- sem lastro com lança e altura máximas.

Consultar-nos





Document commercial non contractuel. Pour toute information technique se référer à la notice correspondante.

Unverbindliches Vertriebsdokument. Für technische Informationen, siehe die entsprechenden Anweisungen.

This commercial document is not legally binding. For any technical information, please refer to the corresponding instructions.

Documento commercial no contractuel. Para cualquier información técnica, ver la noticia correspondiente.

Documento commerciale non vincolante, per tutte le informazioni tecniche fare riferimento al catalogo istruzioni.

Documento comercial não contratual. Para qualquer informação técnica complementar consultar as respectivas instruções.



Manitowoc Crane Group



18, rue de Charbonnières - B.R.173  
69132 ECULLY Cedex - France

Tél. : +33 (0) 4 72 18 20 20

Fax. : +33 (0) 4 72 18 20 00

[www.manitowoccrane.com](http://www.manitowoccrane.com)

#### Americas

Tel : +1 888 479 7278

Tel : +1 717 593 2000

#### Europe – Middle East – Africa

Tel : +33 (0) 4 72 81 50 00

Tel : +44 (0) 191 522 2000

#### Asia – Pacific

Tel : +65 6264 1188

Fax : +65 6862 4142

[www.manitowoccrane.com](http://www.manitowoccrane.com)

**MD 900 B**

Réf. 2003 48 LZA 3

Copyright.Reproduction interdite © POTAIN 2003