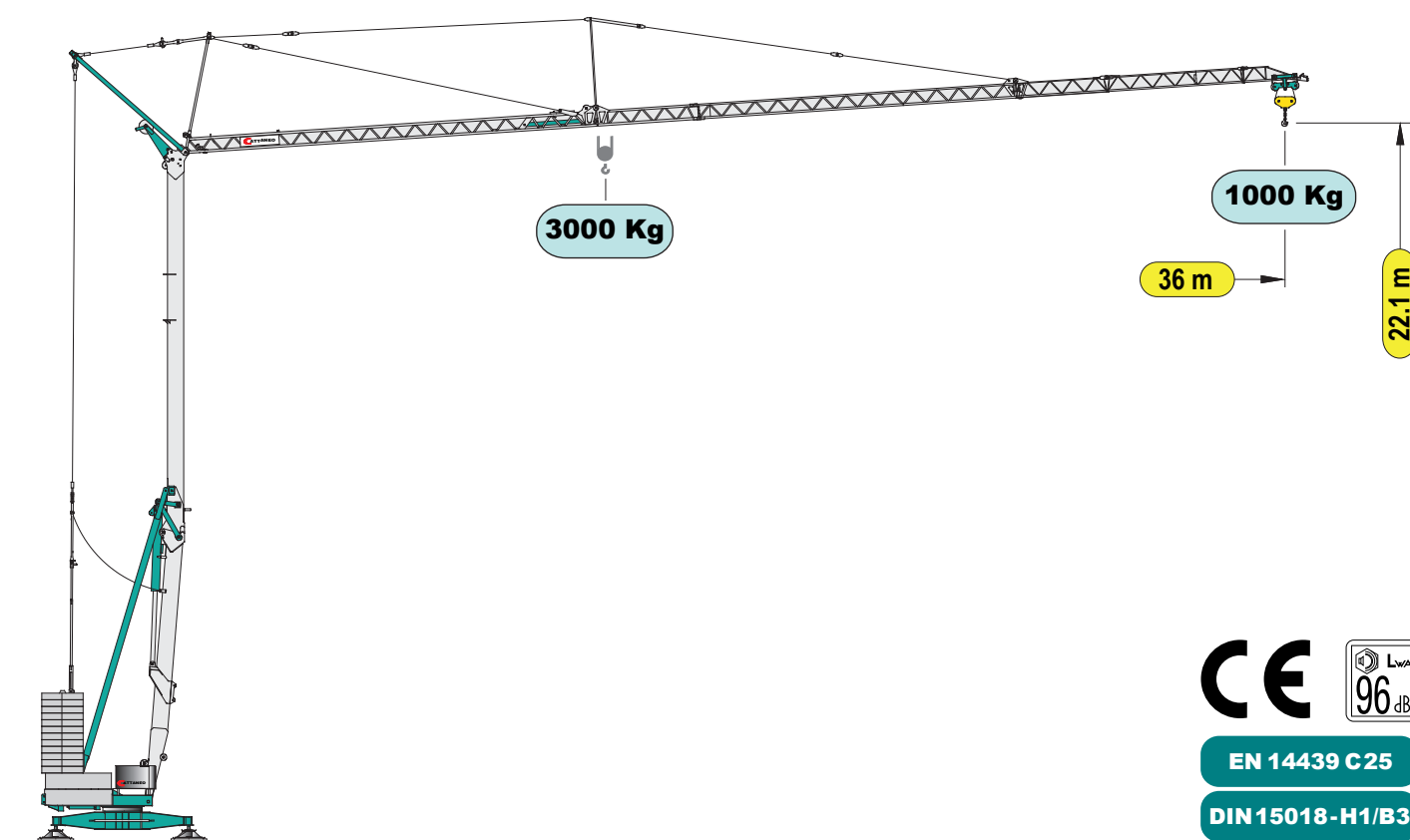


# CM 75S4

# serie performance

## Gru idraulica a montaggio rapido

Hydraulic crane with quick assembling  
Grue hydraulique à montage rapide  
Hydraulischer Schnellmontagekran  
Grúa hidráulica de montaje rápido



EN 14439 C25

DIN 15018-H1/B3

**PROGETTO:** Ufficio Tecnico LUIGI CATTANEO SpA  
**COSTRUZIONE:** Stabilimenti LUIGI CATTANEO SpA

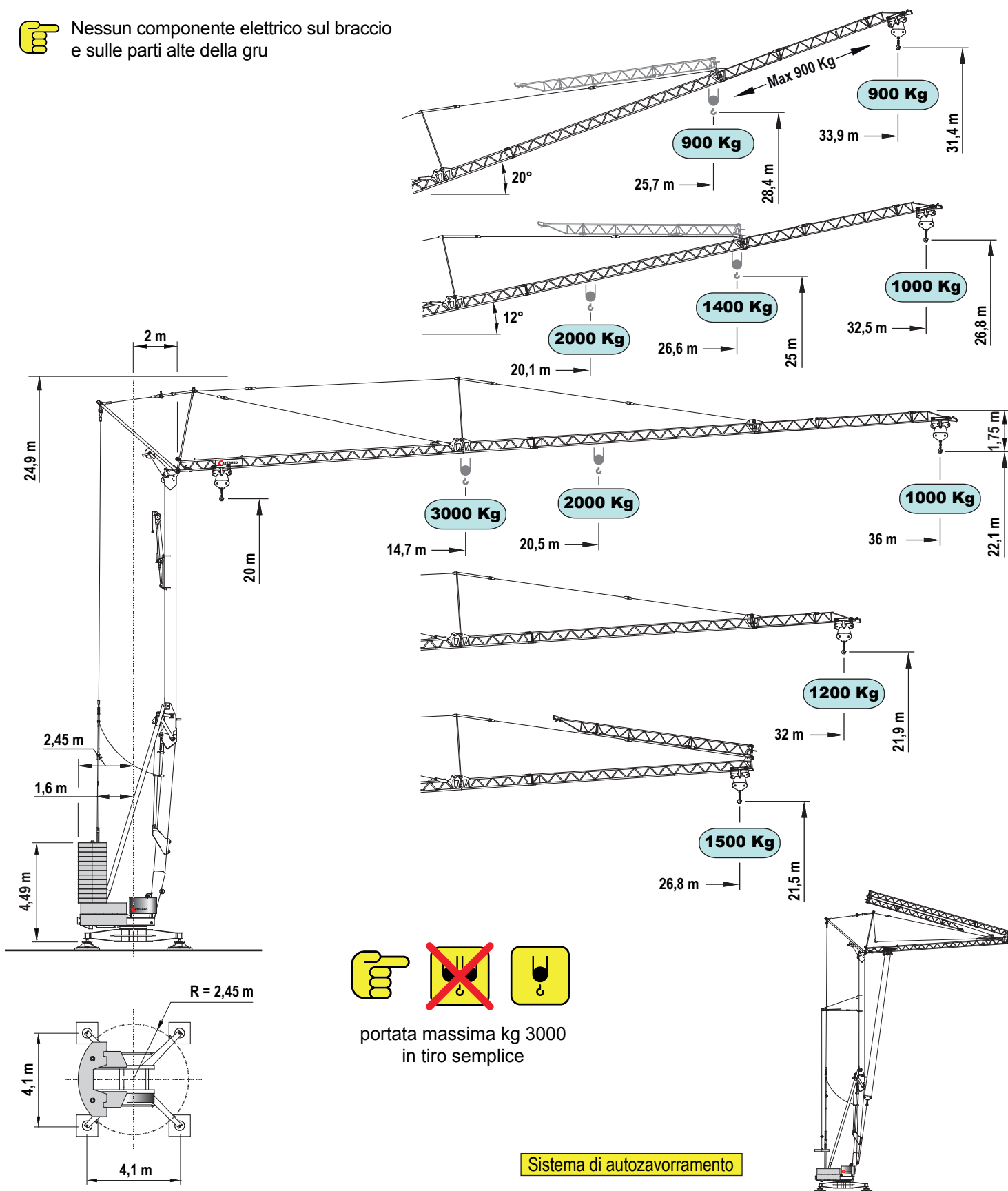
# CATTANEO

Luigi Cattaneo S.p.A.  
via Trieste 14 - 20020 Magnago (MI) Italia  
tel. +39 331 657132 - fax +39 331 305460  
www.cattaneogru.it

# CM 75S4



Nessun componente elettrico sul braccio e sulle parti alte della gru



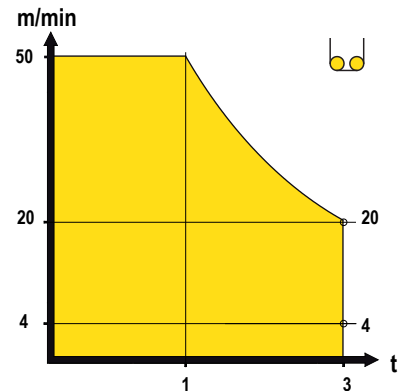
portata massima kg 3000  
in tiro semplice

Sistema di autozavorramento

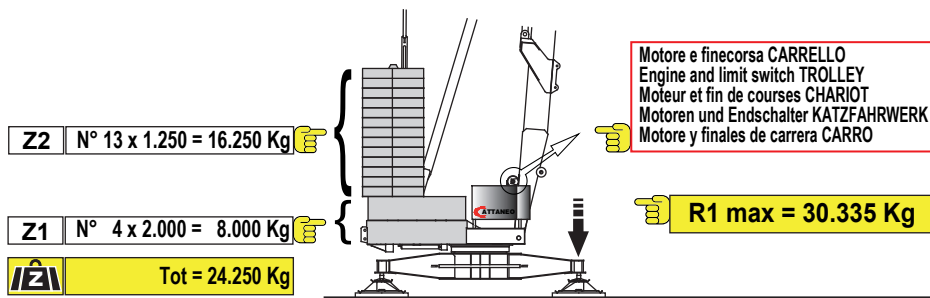
Curve di carico	kg	3000	2500	2000	1900	1800	1700	1600	1500	1400	1300	1200	1100	1000
Load diagrams	m	14.7	17.1	20.5	21.4	22.4	23.4	24.6	26.0	27.5	29.2	31.1	33.3	36.0
Courbes de charge	m	15.1	17.5	21.0	21.9	22.9	24.1	25.3	26.7	28.2	30.0	32.0		
Lastkurven	m	15.1	17.6	21.0	22.0	23.0	24.1	25.4	26.8					
Curvas de cargas	m			20.1	21.0	21.9	23.0	24.1	25.4	26.9	28.6	30.5	32.7	35.2

## Prestazioni - Performances - Prestations - Leistungen - Prestaciones

		<b>kW</b>	400V - 50Hz 16 kW				
	inverter	<b>kW/g/min</b>		1°	2°	3°	4°
				m/min	4	20	35
			kg	3000	3000	2000	1000
	inverter	<b>3/1400</b>	m/min 25 - 50				
	inverter	<b>3,7/900</b>	g/min 0,3 - 0,9				



## Contrappeso in lastre di cemento armato - Ferro-concrete ballast slabs Contrepoids en plaques de béton armé - Gegenballast aus Stahlbetonplatten - Lastre en hormigón armado



## Trasporto - Transport - Transport - Transport - Transporte

